

Product datasheet for **RC202850**

NENF (NM_013349) Human Tagged ORF Clone

Product data:

Product Type: Expression Plasmids
Product Name: NENF (NM_013349) Human Tagged ORF Clone
Tag: Myc-DDK
Symbol: NENF
Synonyms: CIR2; SCIRP10; SPUF
Mammalian Cell Selection: Neomycin
Vector: pCMV6-Entry (PS100001)
E. coli Selection: Kanamycin (25 ug/mL)
ORF Nucleotide Sequence: >RC202850 representing NM_013349
Red=Cloning site Blue=ORF Green=Tags(s)

TTTTGTAATACGACTCACTATAGGGCGGCCGGAATTCGTCGACTGGATCCGGTACCGAGGAGATCTGCC
GCC**CGATCGCC**

ATGGTGGGCCCCGCGCCGCGGGCGGCTGCGGCCGCTGGCAGCGCTGGCCCTGGTCTGGCGCTGGCCC
CGGGGCTGCCACAGCCCGGGCCGGCAGACACCGCCCTGCCAGCGGGGCCCCAGTGGCGCTTTT
CACCGAGGAGGACTGGCCCGCTATGGCGGGGAGGAGGAAGATCAGCCCATCTACTTGGCAGTGAAGGGA
GTGGTGTGGTGTACCTCCGAAAGGAGTTTATGGACGAGGAGCCCCCTACAATGCCTTGACGGGA
AGGACTCCACTAGAGGGTAGCCAAGATGTCCTTGGATCTGCAGACCTACCCATGACACTACGGGTCT
CACGGCCAAGGAACTGGAGGCCCTGGATGAGGTCTTACCAAAGTGTACAAAGCCAAATACCCCATCGTC
GGTACACTGCCCGGAGAATTCTCAATGAGGATGGCAGCCCTAACCTGGACTTCAAGCCTGAAGACCAGC
CCATTTTGACATCAAGGATGAGTTC

ACGCGTACGCGGCCGCTCGAGCAGAACTCATCTCAGAAGAGGATCTGGCAGCAAATGATATCCTGGATT
ACAAGGATGACGACGATAAGGTTTAA

Protein Sequence: >RC202850 representing NM_013349
Red=Cloning site Green=Tags(s)

MVGPAPRRRLRPLAALALVLALAPGLPTARAGQTPRPAERGGPPVRLFTEEELARYGGEEEDQPIYLAVKG
VVFDTVSGKEFYGRGAPYNALTKDSTRGVAKMSLDPADLTHDTTGLTAKELEALDEVFTKVKYKAKYPIV
GYTARRILNEDGSPNLDFKPEDQPHFDIKDEF

TRTRPLEQKLISEEDLAANDILDYKDDDDKV

Chromatograms: https://cdn.origene.com/chromatograms/mk6267_b02.zip



Restriction Sites: SgfI-MluI

Cloning Scheme:



ACCN: NM_013349

ORF Size: 516 bp

OTI Disclaimer: The molecular sequence of this clone aligns with the gene accession number as a point of reference only. However, individual transcript sequences of the same gene can differ through naturally occurring variations (e.g. polymorphisms), each with its own valid existence. This clone is substantially in agreement with the reference, but a complete review of all prevailing variants is recommended prior to use. [More info](#)

OTI Annotation: This clone was engineered to express the complete ORF with an expression tag. Expression varies depending on the nature of the gene.

Components: The ORF clone is ion-exchange column purified and shipped in a 2D barcoded Matrix tube containing 10ug of transfection-ready, dried plasmid DNA (reconstitute with 100 ul of water).

Reconstitution Method:

1. Centrifuge at 5,000xg for 5min.
2. Carefully open the tube and add 100ul of sterile water to dissolve the DNA.
3. Close the tube and incubate for 10 minutes at room temperature.
4. Briefly vortex the tube and then do a quick spin (less than 5000xg) to concentrate the liquid at the bottom.
5. Store the suspended plasmid at -20°C. The DNA is stable for at least one year from date of shipping when stored at -20°C.

RefSeq: [NM_013349.5](#)

RefSeq Size: 944 bp

RefSeq ORF: 519 bp

Locus ID: 29937

UniProt ID: [Q9UMX5](#)

Cytogenetics: 1q32.3

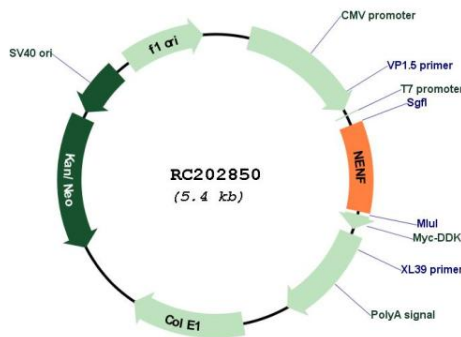
Domains: heme_1

Protein Families: Druggable Genome, Secreted Protein

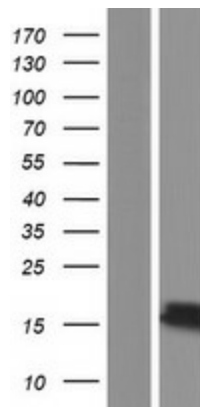
MW: 18.86 kDa

Gene Summary: This gene encodes a neurotrophic factor that may play a role in neuron differentiation and development. A pseudogene of this gene is found on chromosome 12. Alternate splicing of this gene results in multiple transcript variants. [provided by RefSeq, Jan 2009]

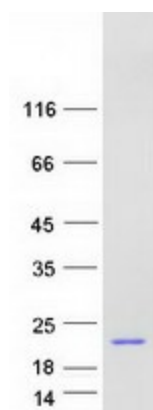
Product images:



Circular map for RC202850



Western blot validation of overexpression lysate (Cat# [LY415653]) using anti-DDK antibody (Cat# [TA50011-100]). Left: Cell lysates from untransfected HEK293T cells; Right: Cell lysates from HEK293T cells transfected with RC202850 using transfection reagent MegaTran 2.0 (Cat# [TT210002]).



Coomassie blue staining of purified NENF protein (Cat# [TP302850]). The protein was produced from HEK293T cells transfected with NENF cDNA clone (Cat# RC202850) using MegaTran 2.0 (Cat# [TT210002]).