

Product datasheet for **RC202848**

CWC25 (NM_017748) Human Tagged ORF Clone

Product data:

Product Type:	Expression Plasmids
Product Name:	CWC25 (NM_017748) Human Tagged ORF Clone
Tag:	Myc-DDK
Symbol:	CWC25
Synonyms:	CCDC49
Mammalian Cell Selection:	Neomycin
Vector:	pCMV6-Entry (PS100001)
E. coli Selection:	Kanamycin (25 ug/mL)



[View online »](#)

ORF Nucleotide
Sequence:

>RC202848 ORF sequence
Red=Cloning site Blue=ORF Green=Tags(s)

TTTTGTAATACGACTCACTATAGGGCGGCCGGAATTCGTCGACTGGATCCGGTACCGAGGAGATCTGCC
GCCGCGATCGCC

ATGGGGGGCGGAGACCTGAATCTGAAGAAGAGCTGGCACCCGAGACCCTCAGGAATGTGGAGAAAGTGT
GGAAGGCCGAGCAGAAGCATGAGGCTGAGCGGAAGAAGATTGAGGAGCTTCAGCGGGAGCTGCGAGAAGA
GAGAGCCCGGAAGAGATGCAGCGCTATGCGGAGGATGTTGGGGCCGTCAGAAAAAAGAAGAAAGTTG
GACTGGATGTACCAGGTCCTGGTGGGATGGTGAACCGTGACGAGTACCTGCTGGGGCGCCCATTTGACA
AATATGTTTTTGAAGAAGTGGAGGAGAAGGAGGCAGGCTGCTCTTCTGAAACAGGACTTCTCCAGGCTC
TATCTTTGCCCATCAGGTGCCAATTCCTTCTTGACATGGCCAGCAAGATCCGGGAGGACCCACTCTTC
ATCATCAGGAAGAAGGAGGAGAAAAACGAGAGGTATTAATAATCCAGTAAAATGAAGAAAAATCA
AAGAATTGTTGCAATGAGTCTGAAAAAAGGAGAAGAAGAAAAAGAGAGAAGAAAAAGACACAA
GAAACATAAGCACAGAAGCTCGAGTAGTGATCGTTCCAGCAGCGAGGATGAGCACAGTGCAGGGAGATCA
CAGAAGAAGATGGCAAAATTCCTCCCTGTTTTGTCCAAAGTCCCTGGATATGGCTTACAGGTCCGGAAT
CTGACCCTAACAGGGTCTTCAGGGTCTCTGACAGCAGAGCAAAAGAGAGGGCATGGGATGAAGAACCA
TTCCAGATCCAGAAGCTCCTCCCACTACCCCCAAGACATGCCAGCAAGAAGAGCACCAGGGAAGCAGGG
TCCCGGGACAGGAGGTCGATCCCTGGCAGAAAGTACAGGTCGCCAAGACCCAGCAAACTGCACAAC
CTAAGGTGAACAGGAGAGAGACAGGCCAACTAGGAGCCCATCACCTAAAAAAGAGGTCTACCAAAGGCG
ACATGCTCCCGGATACACCAGAAACTCTGTCAGAGGAATTAGAGCGAAAACGGCAAGAGATGATGGAA
AACGCCAAATGGAGGGAGGAGAGACTGAACATCCTCAAGAGGCATGCTAAGGATGAGGAACGGGAGC
AGAGGCTAGAGAAGCTGGACTCCCGGGATGGGAAGTTTCATCCACCGCATGAAGCTGGAGAGTGCATCTAC
TTCTCCCTGGAGGATCGGGTGAAGCGGAATATCTACTCTTTACAGAGAACTTCGGTAGCTCTGGAGAAG
AACTTTATGAAAAA

ACGCGTACGCGGCCGCTCGAGCAGAACTCATCTCAGAAGAGGATCTGGCAGCAATGATATCCTGGATT
ACAAGGATGACGACGATAAGGTTTAA

Protein Sequence:

>RC202848 protein sequence
Red=Cloning site Green=Tags(s)

MGGDLNLKKSHPQTLRNVEKVKAEQKHEAERKKIEELQRELREERAREEMQRYAEDVGAVKKKEEKL
DWMYQPGGMVNRDEYLLGRPIDKYVFEKMEKEAGCSSETGLLPGSIFAPSGANSLDMASKIREDPLF
IIRKKEEKKREVLNPNVMMKIKELLQMSLEKKEKKKKKKKKKKKKHHRSSSDRSSEDEHSAGRS
QKKMANSSPVLKVPYGLQVRNSDRNQLQGPLTAEQKRGHGMKNHSRSTRSSSHSPRHASKKSTREAG
SRDRRSRLGRRSRSPRPSKLNHNSKVNRRRETGQTRSPSPKKEVYQRRHAPGYTRKLSAEELERKRQEMME
NAKWREERLNILKRHAKDEEREQRLEKLDSDRGKFIHRMKLESASTSSLEDRVKRNIYSLQRTSVALEK
NFMKR

TRTRPLEQKLISEEDLAANDILDYKDDDDKV

Chromatograms:

https://cdn.origene.com/chromatograms/mk6668_a04.zip

Restriction Sites:

SgfI-MluI

Cloning Scheme:


ACCN: NM_017748

ORF Size: 1275 bp

OTI Disclaimer: The molecular sequence of this clone aligns with the gene accession number as a point of reference only. However, individual transcript sequences of the same gene can differ through naturally occurring variations (e.g. polymorphisms), each with its own valid existence. This clone is substantially in agreement with the reference, but a complete review of all prevailing variants is recommended prior to use. [More info](#)

OTI Annotation: This clone was engineered to express the complete ORF with an expression tag. Expression varies depending on the nature of the gene.

Components: The ORF clone is ion-exchange column purified and shipped in a 2D barcoded Matrix tube containing 10ug of transfection-ready, dried plasmid DNA (reconstitute with 100 ul of water).

- Reconstitution Method:**
1. Centrifuge at 5,000xg for 5min.
 2. Carefully open the tube and add 100ul of sterile water to dissolve the DNA.
 3. Close the tube and incubate for 10 minutes at room temperature.
 4. Briefly vortex the tube and then do a quick spin (less than 5000xg) to concentrate the liquid at the bottom.
 5. Store the suspended plasmid at -20°C. The DNA is stable for at least one year from date of shipping when stored at -20°C.

RefSeq: [NM_017748.5](#)

RefSeq Size: 3112 bp

RefSeq ORF: 1278 bp

Locus ID: 54883

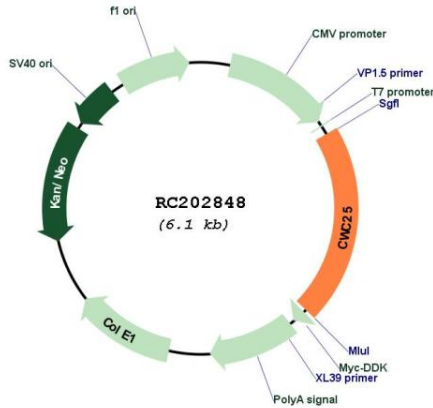
UniProt ID: [Q9NXE8](#)

Cytogenetics: 17q12

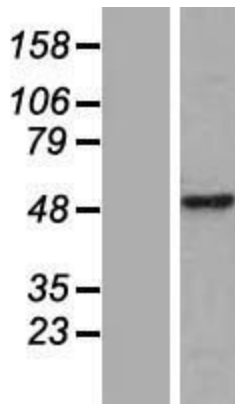
MW: 49.6 kDa

Gene Summary: This gene encodes a factor that is part of the multi-protein C complex involved in pre-mRNA splicing. Alternatively spliced transcripts have been described for this gene. [provided by RefSeq, Nov 2012]

Product images:



Circular map for RC202848



Western blot validation of overexpression lysate (Cat# [LY413574]) using anti-DDK antibody (Cat# [TA50011-100]). Left: Cell lysates from untransfected HEK293T cells; Right: Cell lysates from HEK293T cells transfected with RC202848 using transfection reagent MegaTran 2.0 (Cat# [TT210002]).