

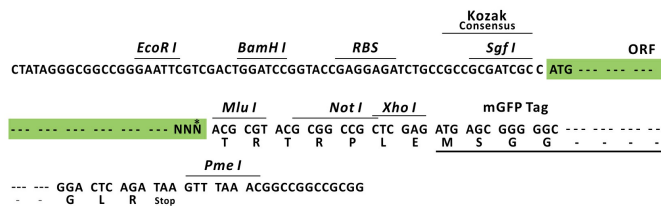
Product datasheet for RC202846L2

PARP16 (NM_017851) Human Tagged Lenti ORF Clone

Product data:

Product Type:	Expression Plasmids
Product Name:	PARP16 (NM_017851) Human Tagged Lenti ORF Clone
Tag:	mGFP
Symbol:	PARP16
Synonyms:	ARTD15; C15orf30; pART15
Mammalian Cell Selection:	None
Vector:	pLenti-C-mGFP (PS100071)
E. coli Selection:	Chloramphenicol (34 ug/mL)
ORF Nucleotide Sequence:	The ORF insert of this clone is exactly the same as(RC202846).
Restriction Sites:	SgfI-MluI
Cloning Scheme:	

Cloning sites used for ORF Shuttling:



* The last codon before the Stop codon of the ORF.

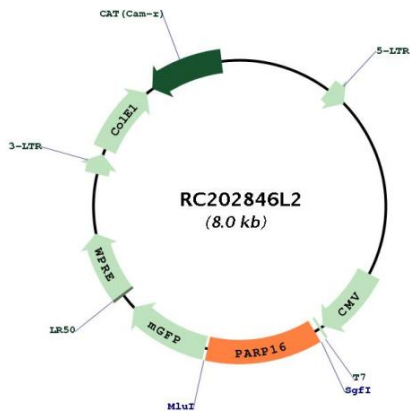
ACCN:	NM_017851
ORF Size:	969 bp



[View online »](#)

OTI Disclaimer:	The molecular sequence of this clone aligns with the gene accession number as a point of reference only. However, individual transcript sequences of the same gene can differ through naturally occurring variations (e.g. polymorphisms), each with its own valid existence. This clone is substantially in agreement with the reference, but a complete review of all prevailing variants is recommended prior to use. More info
OTI Annotation:	This clone was engineered to express the complete ORF with an expression tag. Expression varies depending on the nature of the gene.
Components:	The ORF clone is ion-exchange column purified and shipped in a 2D barcoded Matrix tube containing 10ug of transfection-ready, dried plasmid DNA (reconstitute with 100 ul of water).
Reconstitution Method:	<ol style="list-style-type: none">1. Centrifuge at 5,000xg for 5min.2. Carefully open the tube and add 100ul of sterile water to dissolve the DNA.3. Close the tube and incubate for 10 minutes at room temperature.4. Briefly vortex the tube and then do a quick spin (less than 5000xg) to concentrate the liquid at the bottom.5. Store the suspended plasmid at -20°C. The DNA is stable for at least one year from date of shipping when stored at -20°C.
RefSeq:	NM_017851.4
RefSeq Size:	2551 bp
RefSeq ORF:	972 bp
Locus ID:	54956
UniProt ID:	Q8N5Y8
Cytogenetics:	15q22.31
Protein Families:	Transmembrane
MW:	36.5 kDa
Gene Summary:	Intracellular mono-ADP-ribosyltransferase that may play a role in different processes through the mono-ADP-ribosylation of proteins involved in those processes (PubMed:23103912, PubMed:22701565, PubMed:25043379). May play a role in the unfolded protein response (UPR), by ADP-ribosylating and activating EIF2AK3 and ERN1, two important UPR effectors (PubMed:23103912). May also mediate mono-ADP-ribosylation of karyopherin KPNB1 a nuclear import factor (PubMed:22701565). May not modify proteins on arginine or cysteine residues compared to other mono-ADP-ribosyltransferases (PubMed:22701565). [UniProtKB/Swiss-Prot Function]

Product images:



Circular map for RC202846L2