

Product datasheet for **RC202842**

TTC38 (NM_017931) Human Tagged ORF Clone

Product data:

Product Type:	Expression Plasmids
Product Name:	TTC38 (NM_017931) Human Tagged ORF Clone
Tag:	Myc-DDK
Symbol:	TTC38
Synonyms:	LL22NC03-5H6.5
Mammalian Cell Selection:	Neomycin
Vector:	pCMV6-Entry (PS100001)
E. coli Selection:	Kanamycin (25 ug/mL)



[View online »](#)

ORF Nucleotide Sequence:

>RC202842 ORF sequence
 Red=Cloning site Blue=ORF Green=Tags(s)

TTTTGTAATACGACTCACTATAGGGCGGCCGGAATTCGTCGACTGGATCCGGTACCGAGGAGATCTGCC
 GCC**CGGATCGCC**

ATGGCCGAGCCTCGCCTCTGCGGACTGCCAGGCTGGAAGGATGCGAGGCTCCCGCTCTCCACCACAA
 GCAACGAAGCCTGCAAGCTGTTGATGCCACGCTGACCCAGTATGTAATAAGGACCAATGACAAGAGTCT
 CGGTGGCATCGAGGGCTGCCTGTCAAAGCTCAAAGCAGCAGATCCAACCTTTGTGATGGGCCACGCCATG
 GCTACTGGCCTTGTGCTGATTGGCACTGGAAGCTCCGTGAAGCTGGACAAAGAGCTGGACCTGGCTGTGA
 AGACAATGGTGGAGATTTCAAGAAGCCAGCCGCTGACAAGGCGGGAGCAGCTGCACGTGTCTGCAGTAGA
 GACATTTGCCAATGGAACTTTCCGAAAGCCTGTGAAGTATGGGAACAGATTCTCCAGGACCACCCGACA
 GACATGTTGGCCCTGAAATTTCCCATGATGCTTATTTTTACCTGGGCTATCAGGAACAGATGAGAGATT
 CTGTTGCTCGAATTTACCCCTTCTGGACACCTGACATCCCCTAAGCAGCTATGTGAAAGGCATCTACTC
 TTTTGGCTTGATGAAACCAACTTCTACGACCAGGCAGAAAACTCGCCAAAGAGGCTTTATCTATTAAC
 CCGACAGACGCATGGTCCGTGCACACCTCGCTCACATCCACGAGATGAAAGCAGAGATCAAGGATGGGT
 TGGAAATCATGCAGCACTCAGAGACCCTCTGGAAGGACTCTGATATGTTGGCTTGCATAACTATTGGCA
 CTGGGCTTTATATCTGATTGAGAAGGGCGAATATGAGGCCGCGCTGACCATCTACGATACCCACATCCTT
 CCCAGCCTGCAGGCCAACGATGCAATGCTGGACGTGGTGGACAGCTGCTCCATGCTCTACCGCCTGCAGA
 TGGAAAGGAGTGTCTGTGGCCAGCGGTGGCAGGATGTCTGCCTGTGGCCCGGAAGCACAGCCGAGACCA
 CATCCTGCTGTTCAATGACGCACACTTCTGATGGCATCCCTGGGTGCACACGACCCCGAGACCACACAG
 GAGCTGCTGACCACCTGCGGGACGCCAGCGAATCCCCAGGGGAGAACTGCCAGCACCTCCTGGCCCGAG
 ACGTGGGGCTGCCCTGTGCCAGGCCCTGGTGGAGGCTGAGGACGGGAACCTGACCGCGCTCTGGAGCT
 GCTCCTGCCATCCGCTACCGGATCGTCCAGCTCGGTGGGAGCAATGCCAGAGAGACGTCTTCAACCCAG
 CTGCTGATTACGCGGCCTTAAACTGCACCTCCAGCGTCCATAAGAACGTAGCCCGGAGCCTTCTGATGG
 AGCGTGATGCCTGAAGCCCAACTCGCCCTGACCGAGCGGCTCATCCGCAAGGCAGCTACCGTCCACCT
 CATGCAG

ACGCGTACGCGGCCGCTCGAGCAGAAACTCATCTCAGAAGAGGATCTGGCAGCAAATGATATCCTGGATT
 ACAAGGATGACGACGATAAGGTTTAA

Protein Sequence:

>RC202842 protein sequence
 Red=Cloning site Green=Tags(s)

MAAASPLRDCQAWKDARLPLSTTSNEACKLFDATLTQYVVKWTNDKSLGGIEGCLSKLKAADPTFVMGHAM
 ATGLVLIGTGSSVKLDKELDLAVKTMVEISRTQPLTRREQLHVS AVETFANGNFPKACELWEQILQDHPT
 DMLALKFSDAYFYLYGQEQMRDSVARIYPFWTPDIPLSSYVVKGIYSFGLMETNFYDQAEKLAKEALSIN
 PTDASVHTVAHIHEMKAEIKDGLFEMQHSETLWKDSMLACHNYWHWALYLIEKGEYEAALTIYDTHIL
 PSLQANDAMLDVVDS SMLYRLQMEGVS VQRWQDVL PVARKHSRDHILLFNDAHFLMASLGAHDPQTTQ
 ELLTTLRDASESPGENCQHLLARDVGLPLCQALVEAEDGNPDRVLELLLPYRIRIVQLGGSNAQRDVFNQ
 LLIHAALNCTSSVHKNVARSLLMERDALKPNSPLTERLIRKAATVHLMQ

TRTRPLEQKLI SEEDLAANDILDYKDDDDKV

Chromatograms:

https://cdn.origene.com/chromatograms/mk6436_b06.zip

Restriction Sites:

Sgfl-Mlul

Cloning Scheme:


ACCN: NM_017931

ORF Size: 1407 bp

OTI Disclaimer: The molecular sequence of this clone aligns with the gene accession number as a point of reference only. However, individual transcript sequences of the same gene can differ through naturally occurring variations (e.g. polymorphisms), each with its own valid existence. This clone is substantially in agreement with the reference, but a complete review of all prevailing variants is recommended prior to use. [More info](#)

OTI Annotation: This clone was engineered to express the complete ORF with an expression tag. Expression varies depending on the nature of the gene.

Components: The ORF clone is ion-exchange column purified and shipped in a 2D barcoded Matrix tube containing 10ug of transfection-ready, dried plasmid DNA (reconstitute with 100 ul of water).

Reconstitution Method:

1. Centrifuge at 5,000xg for 5min.
2. Carefully open the tube and add 100ul of sterile water to dissolve the DNA.
3. Close the tube and incubate for 10 minutes at room temperature.
4. Briefly vortex the tube and then do a quick spin (less than 5000xg) to concentrate the liquid at the bottom.
5. Store the suspended plasmid at -20°C. The DNA is stable for at least one year from date of shipping when stored at -20°C.

Note: Plasmids are not sterile. For experiments where strict sterility is required, filtration with 0.22um filter is required.

RefSeq: [NM_017931.3](#)

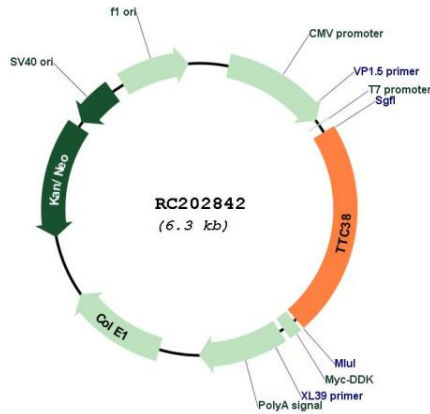
RefSeq Size: 2616 bp

RefSeq ORF: 1410 bp

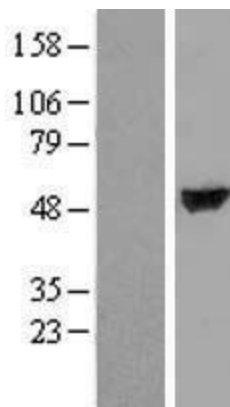
Locus ID: 55020

UniProt ID: [Q5R3I4](#)
 Cytogenetics: 22q13.31
 MW: 52.8 kDa

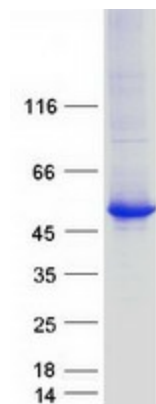
Product images:



Circular map for RC202842



Western blot validation of overexpression lysate (Cat# [LY413442]) using anti-DDK antibody (Cat# [TA50011-100]). Left: Cell lysates from untransfected HEK293T cells; Right: Cell lysates from HEK293T cells transfected with RC202842 using transfection reagent MegaTran 2.0 (Cat# [TT210002]).



Coomassie blue staining of purified TTC38 protein (Cat# [TP302842]). The protein was produced from HEK293T cells transfected with TTC38 cDNA clone (Cat# RC202842) using MegaTran 2.0 (Cat# [TT210002]).