

Product datasheet for **RC202839**

DNAJC11 (NM_018198) Human Tagged ORF Clone

Product data:

Product Type:	Expression Plasmids
Product Name:	DNAJC11 (NM_018198) Human Tagged ORF Clone
Tag:	Myc-DDK
Symbol:	DNAJC11
Synonyms:	dj126A5.1
Mammalian Cell Selection:	Neomycin
Vector:	pCMV6-Entry (PS100001)
E. coli Selection:	Kanamycin (25 ug/mL)



[View online »](#)

ORF Nucleotide Sequence:

>RC202839 ORF sequence
 Red=Cloning site Blue=ORF Green=Tags(s)

TTTTGTAATACGACTCACTATAGGGCGGCCGGAATTCGTCGACTGGATCCGGTACCGAGGAGATCTGCC
 GCC**CGGATCGCC**

ATGGCGACGGCCTTGAGCGAGGAGGACTGGACAATGAAGACTATTACTCGTTGCTGAACGTGCGCAGGG
 AGGCCTCTTCTGAAGAGCTGAAAGCTGCCTACCGAGGCTCTGTATGCTCTACCATCCAGACAAGCACAG
 AGACCCAGAGCTCAAGTACAGGCGGAACGACTGTTTAACTTGTTCACCAGGCTTATGAAGTGCTTAGT
 GACCCCAAAACCAGGGCCATCTATGATATATATGGGAAGAGAGGACTGGAAATGGAAGGATGGGAGGTTG
 TGGAAAGGAGGAGAACCCTGCTGAAATTCGAGAGGAGTTTGGAGCGCTGCAGAGAGAGAGAAGAGAG
 GAGATTGCAGCAGCAACCAATCCCAAGGGAACGATCAGCGTTGGAGTAGATGCCACCGACCTTTTTGAT
 CGCTATGATGAGGAGTATGAAGATGTGTCGGCAGTAGCTTCCGAGATTGAAATTAATAAAATGCACA
 TATCCAGTCCATTGAGGCACCTTGACAGCGACAGACACAGCCATCCTCTCTGGAAGCCTCTCAACCCA
 GAATGGAATGGAGGAGTTCCATTAACCTTTCGCTCAGACGAGTAACCTCGGCAAGGGATGGGGAGAG
 TTGGAATTTGGAGCTGGAGACCTACAGGGGCTTTGTTCCGGTCTCAAGCTGTTCCGTAATCTCACACCAA
 GATGCTTTGTGACAACAACTGTGCTCTGCAGTTTTTCATCCCGTGAATCCGACCCGGCCTGACCACTGT
 CCTAGCTCGGAACCTAGACAAGAACCCTGGGCTACCTGCAGTGGCGATGGGGTATCCAGTCAAGCCATG
 AACACTAGCATCGTCCGAGACACTAAAAGCAGCCACTTCACTGTGGCCCTGCAGCTGGGAATCCCTCACT
 CCTTTGCACTGATCAGCTATCAGCAAAATCCAAAGTACGATCAGACTCGTGTGAAAGGATCCCTCAA
 AGCAGGCTTCTTTGGGACGGTGGTGGAGTACGGAGCTGAGAGGAAGATCTCCAGGCACAGCGTTTTGGGT
 GCAGCTGTACGCTTGGAGTCCACAGGGCGTTTCTCTCAAAGTCAAGCTCAACAGGGCCAGTCAAGCAT
 ACTTCTCCCTATTCACCTTGACGGACCACTTCTGCCAGCGCCATGTTCTATGCCACCGTGGGGCCTCT
 AGTGGTCTACTTTGCCATGCACCGTCTGATCATCAAACCATACCTCAGGGCTCAGAAAGAGAAGGAATTG
 GAGAAGCAGAGGAAAGCGCCGCCACCGATGTGCTGCAGAAGAAGCAAGAGGCGGAGTCCGCTGTCCGGC
 TGATGCAGGAATCTGTCCGAAGGATAATTGAGGCAGAAGAGTCCAGAATGGGCCTCATCATCGTCAATGC
 CTGGTACGGGAAGTTTGTCAATGACAAGAGCAGGAAGAGCGAGAAGGTGAAGGTGATTGACGTGACTGTG
 CCCCTGCAGTGCCTGGTGAAGGACTCGAAGCTCATCCTCACGGAGGCTCCAAGGCTGGGCTGCCTGGCT
 TTTATGACCCGTGTGTGGGGGAAGAGAAGAACTGAAAGTGTCTATCAGTTCGGGGCGTCTGCATCA
 GGTGATGGTGTGACAGTGAGGCCCTCCGGATACCAAAGCAGTCCACAGGATCGATACAGATGGA

**ACGCGTACGCGGCCGCTCGAGCAGAACTCATCTCAGAAGAGGATCTGGCAGCAAATGATATCCTGGATT
 ACAAGGATGACGACGATAAGGTTTAA**

Protein Sequence:

>RC202839 protein sequence
 Red=Cloning site Green=Tags(s)

MATALSEEELDNEDYSSLNVRREASSEELKAAAYRRLCMLYHPDKHRDPELKSQAERLFNLVHQAYEVLSDPQTRAIYDIYGKRGLEMEGWVVERRRTPAEIREEFERLQREEREERLQQRTPNPKGTISVGV DATDLFD
 RYDEEYEDVSGSSFPQIEINKMHISQSIAPL TATDTAILSGSLSTQNGNGGGSINFALRRVTSAKGWGE
 LEFGAGDLQGPLFGLKLFRLNTPRCFVTTNCALQFSSRGIRPGLTTVLARNLDKNTVGYLQWRWGIQSAM
 NTSIVRDTKSSHFTVALQLGIPHSFALISYQHKFQDDQTRVKGSLKAGFFGTVEYGAERKISRHSVLG
 AAVSVGVPQGVSLKVKLNRSQTYFFPIHLTDQLLPSAMFYATVGPLVVYFAMHRLI IKPYLRAQKEKEL
 EKQRESAATDVLQKKQEAESAVRLMQESVRRRIIEAEE SRMGLIIVNAWYGKVFVNDKSRKSEKVKVIDVTV
 PLQCLVKDSKILTEASKAGLPGFYDPCVGEENLKVLYQFRGVLHQVMVLDSEALRIPKQSHRIDTDG

TRTRPLEQKLI SEEDLAANDILDYKDDDDKV

Chromatograms:

https://cdn.origene.com/chromatograms/mk6774_b09.zip

Restriction Sites:

Sgfl-MluI

Cloning Scheme:


ACCN: NM_018198

ORF Size: 1677 bp

OTI Disclaimer: Due to the inherent nature of this plasmid, standard methods to replicate additional amounts of DNA in E. coli are highly likely to result in mutations and/or rearrangements. Therefore, OriGene does not guarantee the capability to replicate this plasmid DNA. Additional amounts of DNA can be purchased from OriGene with batch-specific, full-sequence verification at a reduced cost. Please contact our customer care team at custsupport@origene.com or by calling 301.340.3188 option 3 for pricing and delivery.

The molecular sequence of this clone aligns with the gene accession number as a point of reference only. However, individual transcript sequences of the same gene can differ through naturally occurring variations (e.g. polymorphisms), each with its own valid existence. This clone is substantially in agreement with the reference, but a complete review of all prevailing variants is recommended prior to use. [More info](#)

OTI Annotation: This clone was engineered to express the complete ORF with an expression tag. Expression varies depending on the nature of the gene.

Components: The ORF clone is ion-exchange column purified and shipped in a 2D barcoded Matrix tube containing 10ug of transfection-ready, dried plasmid DNA (reconstitute with 100 ul of water).

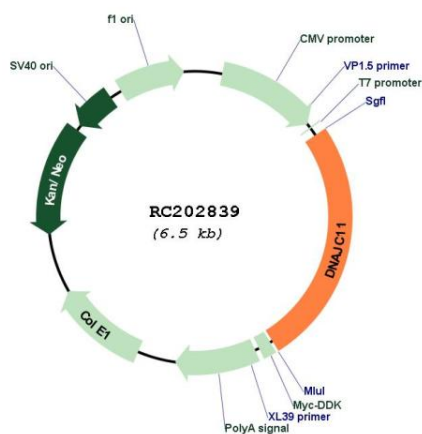
- Reconstitution Method:**
1. Centrifuge at 5,000xg for 5min.
 2. Carefully open the tube and add 100ul of sterile water to dissolve the DNA.
 3. Close the tube and incubate for 10 minutes at room temperature.
 4. Briefly vortex the tube and then do a quick spin (less than 5000xg) to concentrate the liquid at the bottom.
 5. Store the suspended plasmid at -20°C. The DNA is stable for at least one year from date of shipping when stored at -20°C.

RefSeq: [NM_018198.4](#)

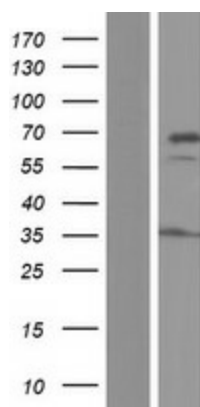
RefSeq Size: 3316 bp
 RefSeq ORF: 1680 bp
 Locus ID: 55735
 UniProt ID: [Q9NVH1](#)
 Cytogenetics: 1p36.31
 Domains: Dnaj
 MW: 63.3 kDa

Gene Summary: Isoform 1: Required for mitochondrial inner membrane organization. Seems to function through its association with the MICOS complex and the mitochondrial outer membrane sorting assembly machinery (SAM) complex.[UniProtKB/Swiss-Prot Function]

Product images:



Circular map for RC202839



Western blot validation of overexpression lysate (Cat# [LY413243]) using anti-DDK antibody (Cat# [TA50011-100]). Left: Cell lysates from untransfected HEK293T cells; Right: Cell lysates from HEK293T cells transfected with RC202839 using transfection reagent MegaTran 2.0 (Cat# [TT210002]).