

Product datasheet for **RC202838**

PACC1 (NM_018252) Human Tagged ORF Clone

Product data:

Product Type:	Expression Plasmids
Product Name:	PACC1 (NM_018252) Human Tagged ORF Clone
Tag:	Myc-DDK
Symbol:	PACC1
Synonyms:	ASOR; C1orf75; hPAC; hTMEM206; PAC; PAORAC; TMEM206
Mammalian Cell Selection:	Neomycin
Vector:	pCMV6-Entry (PS100001)
E. coli Selection:	Kanamycin (25 ug/mL)
ORF Nucleotide Sequence:	>RC202838 ORF sequence Red=Cloning site Blue=ORF Green=Tags(s)

TTTTGTAATACGACTCACTATAGGGCGGCCGGAATTCGTCGACTGGATCCGGTACCGAGGAGATCTGCC
GCC**CGATCGCC**

ATGATCCGGCAGGAGCGCTCCACATCCTACCAGGAGCTGAGTGAGGAGTTGGTCCAGGTGGTTGAGAACT
CAGAGCTGGCAGACGAGCAGGACAAGGAGACGGTCAGAGTCCAAGGTCGGGTATCTTACCAGGCCCTGGA
CAGCGAGTCCGCCTCCAGCAGCATCCGCTTCAGCAAGGCCTGCCTGAAGAAGCTTCTCGGTCTACTC
ATCTTCATCTACCTGCTGCTCATGGCTGTGGCCGCTTCTCTGGTCTACCGGACCATCACAGACTTTCGTG
AGAAACTCAAGCACCCCTGTCATGTCTGTGCTTACAAGGAAGTGGATCGCTATGATGCCCCAGGTATTGC
CTTGTAACCCCGGTCAGGCCAGTTGCTCAGCTGTAAAGCACCATTACGAGGTCATTCTCCTCTGACAAGC
CCTGGCCAGCCGGGTGACATGAATTGCACCACCCAGAGGATCAACTACACGGACCCCTTCTCCAATCAGA
CTGTGAAATCTGCCCTGATTGTCCAGGGGCCCCGGGAAGTAAAAAGCGGGAGCTGGTCTTCTCCAGTT
CCGCCTGAACAAGAGTAGTGAGGACTTCAGCGCCATTGATTACCTCCTCTTCTCTTTCCAGGAGTTC
CTGCAAAGCCCAAACAGGGTAGGCTTATGCAGGCCTGTGAGAGTGCCTATTCCAGCTGGAAGTTCTCTG
GGGCTTCCGCACCTGGGTCAAGATGCTACTGGTAAAGACCAAGGAGGAGGATGGCGGGGAAGCAGTGGA
GTTCCGGCAGGAGACAAGTGTGGTAACTACATTGACCAGAGGCCAGCTGCCAAAAAAGTGCTCAATTG
TTTTTTGTGGTCTTTGAATGAAAAGATCCTTTCATCCAGAAAGTCCAAGATATAGTCACTGCCAATCCTT
GGAACACAATTGCTCTTCTCTGTGGCGCCTTCTTGGCATTATTTAAAGCAGCAGAGTTTGCCAAACTGAG
TATAAAATGGATGATCAAAATTAGAAAAGAGATACCTTAAAAGAAGAGGTCAGGCAACGAGCCACATAAGC

ACGCGTACGCGGCCGCTCGAGCAGAACTCATCTCAGAAGAGGATCTGGCAGCAAATGATATCCTGGATT
ACAAGGATGACGACGATAAGGTTTAA



[View online »](#)

Protein Sequence: >RC202838 protein sequence
 Red=Cloning site Green=Tags(s)

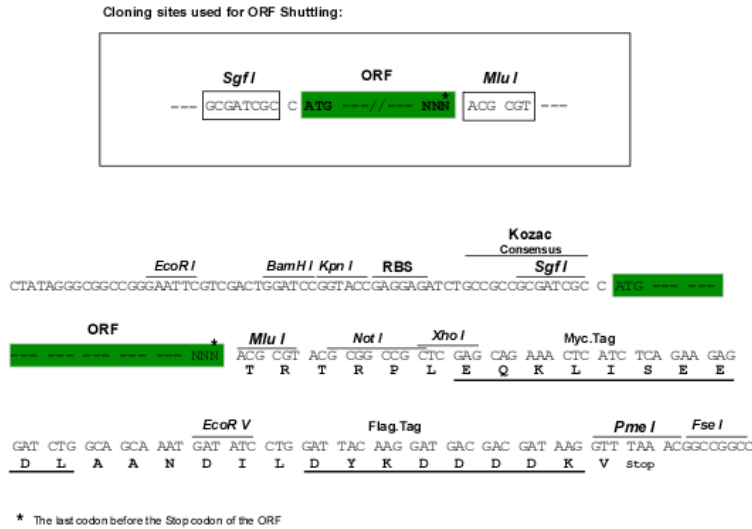
MIRQERSTSYQELSEELVQVVENSELADEQDKETVRVQGPGLPGLDSESASSSIRFSKACLKNVFSVLL
 IFIYLLLMVAVFLVYRTITDFREKLKHPVMSVSYKEVDYDAPGIALYPGQAQLLSCKHHYEVIPPLTS
 PGQPGDMNCTTQRINYPDFFSNQTVKSALIVQGPREVKKRELVFLQFRLNKSSSEDFSAIDYLLFSSFQEF
 LQSPNRVGFMQACESAYS~~SSW~~KFSGGFRTWVKMSLVKTK~~EE~~DGREAVEFRQETS~~VV~~NYIDQRPAAKKSAQL
 FFVVFEWKDPFIQKVQDIVTANPWNTIALLCGAFALFKAAEF~~AKLSIKWMIKIRKRYL~~KRRGQATSHIS

TRTRPLEQKLISEEDLAANDILDYKDDDDK~~V~~

Chromatograms: https://cdn.origene.com/chromatograms/mk6668_a06.zip

Restriction Sites: SgfI-MluI

Cloning Scheme:



ACCN: NM_018252

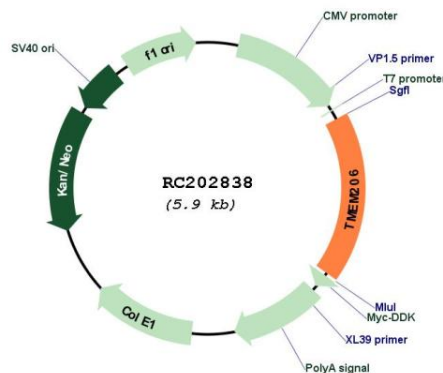
ORF Size: 1050 bp

OTI Disclaimer: Due to the inherent nature of this plasmid, standard methods to replicate additional amounts of DNA in E. coli are highly likely to result in mutations and/or rearrangements. Therefore, OriGene does not guarantee the capability to replicate this plasmid DNA. Additional amounts of DNA can be purchased from OriGene with batch-specific, full-sequence verification at a reduced cost. Please contact our customer care team at custsupport@origene.com or by calling 301.340.3188 option 3 for pricing and delivery.

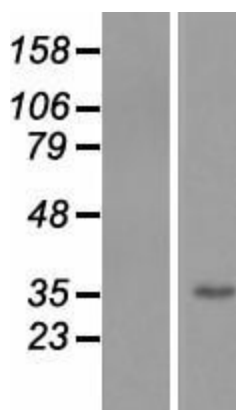
The molecular sequence of this clone aligns with the gene accession number as a point of reference only. However, individual transcript sequences of the same gene can differ through naturally occurring variations (e.g. polymorphisms), each with its own valid existence. This clone is substantially in agreement with the reference, but a complete review of all prevailing variants is recommended prior to use. [More info](#)

OTI Annotation:	This clone was engineered to express the complete ORF with an expression tag. Expression varies depending on the nature of the gene.
Components:	The ORF clone is ion-exchange column purified and shipped in a 2D barcoded Matrix tube containing 10ug of transfection-ready, dried plasmid DNA (reconstitute with 100 ul of water).
Reconstitution Method:	<ol style="list-style-type: none">1. Centrifuge at 5,000xg for 5min.2. Carefully open the tube and add 100ul of sterile water to dissolve the DNA.3. Close the tube and incubate for 10 minutes at room temperature.4. Briefly vortex the tube and then do a quick spin (less than 5000xg) to concentrate the liquid at the bottom.5. Store the suspended plasmid at -20°C. The DNA is stable for at least one year from date of shipping when stored at -20°C.
RefSeq:	NM_018252.3
RefSeq Size:	1978 bp
RefSeq ORF:	1053 bp
Locus ID:	55248
UniProt ID:	Q9H813
Cytogenetics:	1q32.3
Protein Families:	Transmembrane
MW:	40 kDa
Gene Summary:	Proton-activated chloride channel that mediates import of chloride ion in response to extracellular acidic pH (PubMed:31023925). Involved in acidosis-induced cell death by mediating chloride influx and subsequent cell swelling (PubMed:31023925).[UniProtKB/Swiss-Prot Function]

Product images:



Circular map for RC202838



Western blot validation of overexpression lysate (Cat# [LY413192]) using anti-DDK antibody (Cat# [TA50011-100]). Left: Cell lysates from untransfected HEK293T cells; Right: Cell lysates from HEK293T cells transfected with RC202838 using transfection reagent MegaTran 2.0 (Cat# [TT210002]).