

Product datasheet for **RC202832**

RAB14 (NM_016322) Human Tagged ORF Clone

Product data:

Product Type:	Expression Plasmids
Product Name:	RAB14 (NM_016322) Human Tagged ORF Clone
Tag:	Myc-DDK
Symbol:	RAB14
Synonyms:	FBP; RAB-14
Mammalian Cell Selection:	Neomycin
Vector:	pCMV6-Entry (PS100001)
E. coli Selection:	Kanamycin (25 ug/mL)
ORF Nucleotide Sequence:	>RC202832 ORF sequence Red=Cloning site Blue=ORF Green=Tags(s)

TTTTGTAATACGACTCACTATAGGGCGGCCGGAATTCGTCGACTGGATCCGGTACCGAGGAGATCTGCC
GCC**CGATCGCC**

ATGGCAACTGCACCATACAACACTCTTACATCTTTAAATATATTATTATTGGGGACATGGGAGTAGGAA
AATCTTGCTTGCCTCATCAATTTACAGAAAAAATTTATGGCTGATTGCCTCACACAATTGGTGTGA
ATTTGGTACAAGAATAATCGAAGTTAGTGGCCAAAAAATAAACTGCAGATTTGGGATACGGCAGGACAG
GAGCGATTTAGGGCTGTACACGGAGCTACTACAGAGGAGCTGCGGGAGCTCTTATGGTCTATGATATCA
CTAGAAGAAGTACATATAACCACTTAAGCAGCTGGTTGACAGATGCAAGGAATCTACCAATCCAAATAC
TGTAATAATTCTCATAGGAAATAAAGCAGATTTGGAGGCACAGAGAGATGTTACATATGAAGAAGCCAAA
CAGTTTGTGAAGAAAATGGCTTATTGTTCTCGAAGCGAGTGCAAAAACGGGAGAGAATGTAGAAGATG
CCTTCCTTGAGGCTGCCAAGAAAATCTATCAGAACATTCAGGATGGAAGCTTGGATCTGAATGCTGCTGA
GTCTGGTGTACAACACAAACCTTCAGCCCCGAGGGAGGCCGGCTAACCAAGTGAACCCCAACCCAGAGA
GAAGGCTGTGGCTGC

ACGCGTACGCGGCCGCTCGAGCAGAACTCATCTCAGAAGAGGATCTGGCAGCAATGATATCCTGGATT
ACAAGGATGACGACGATAAGGTTTAA



[View online »](#)

Protein Sequence: >RC202832 protein sequence
 Red=Cloning site Green=Tags(s)

MATAPYNYSYIFKYIIIGDMGVGKSCLLHQFTEKKFMADCPHTIGVEFGTRIIIEVSGQKIKLQIWDTAGQ
 ERFRAVTRSYRGAAGALMYYDITRRSTYNHLSSWLTARNLTNPNTVIIILIGNKADLEAQRDVTYEEAK
 QFAEENGLLFLEASAKTGENVEDAFLEAAKKIYQNIQDGSLLDNLAAESGVQHKPSAPQGGRLTSEPQPQR
 EGCGC

TRTRPLEQKLISEEDLAANDILDYKDDDDKV

Chromatograms: https://cdn.origene.com/chromatograms/mk6411_h10.zip

Restriction Sites: SgfI-MluI

Cloning Scheme:

Cloning sites used for ORF Shuttling:



* The last codon before the Stop codon of the ORF

ACCN: NM_016322

ORF Size: 645 bp

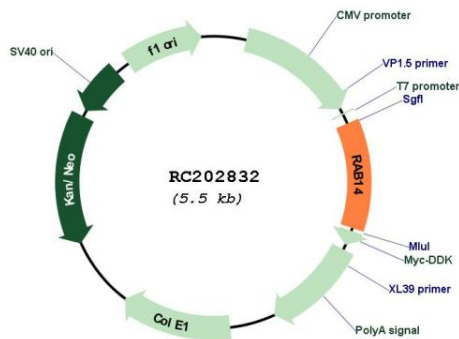
OTI Disclaimer: The molecular sequence of this clone aligns with the gene accession number as a point of reference only. However, individual transcript sequences of the same gene can differ through naturally occurring variations (e.g. polymorphisms), each with its own valid existence. This clone is substantially in agreement with the reference, but a complete review of all prevailing variants is recommended prior to use. [More info](#)

OTI Annotation: This clone was engineered to express the complete ORF with an expression tag. Expression varies depending on the nature of the gene.

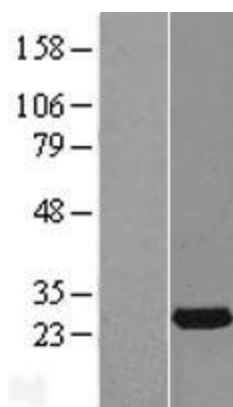
Components: The ORF clone is ion-exchange column purified and shipped in a 2D barcoded Matrix tube containing 10ug of transfection-ready, dried plasmid DNA (reconstitute with 100 ul of water).

- Reconstitution Method:**
1. Centrifuge at 5,000xg for 5min.
 2. Carefully open the tube and add 100ul of sterile water to dissolve the DNA.
 3. Close the tube and incubate for 10 minutes at room temperature.
 4. Briefly vortex the tube and then do a quick spin (less than 5000xg) to concentrate the liquid at the bottom.
 5. Store the suspended plasmid at -20°C. The DNA is stable for at least one year from date of shipping when stored at -20°C.
- Note:** Plasmids are not sterile. For experiments where strict sterility is required, filtration with 0.22um filter is required.
- RefSeq:** [NM_016322.4](#)
- RefSeq Size:** 4379 bp
- RefSeq ORF:** 648 bp
- Locus ID:** 51552
- UniProt ID:** [P61106](#)
- Cytogenetics:** 9q33.2
- Domains:** ras, RAN, RAS, RHO, RAB
- Protein Families:** Druggable Genome
- MW:** 23.9 kDa
- Gene Summary:** RAB14 belongs to the large RAB family of low molecular mass GTPases that are involved in intracellular membrane trafficking. These proteins act as molecular switches that flip between an inactive GDP-bound state and an active GTP-bound state in which they recruit downstream effector proteins onto membranes (Junutula et al., 2004 [PubMed 15004230]). [supplied by OMIM, Mar 2009]

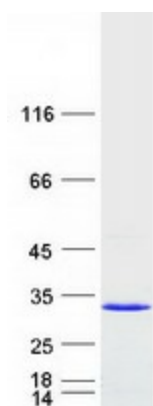
Product images:



Circular map for RC202832



Western blot validation of overexpression lysate (Cat# [LY414055]) using anti-DDK antibody (Cat# [TA50011-100]). Left: Cell lysates from untransfected HEK293T cells; Right: Cell lysates from HEK293T cells transfected with RC202832 using transfection reagent MegaTran 2.0 (Cat# [TT210002]).



Coomassie blue staining of purified RAB14 protein (Cat# [TP302832]). The protein was produced from HEK293T cells transfected with RAB14 cDNA clone (Cat# RC202832) using MegaTran 2.0 (Cat# [TT210002]).