

## Product datasheet for **RC202819**

### Inhibin alpha (INHA) (NM\_002191) Human Tagged ORF Clone

#### Product data:

Product Type:	Expression Plasmids
Product Name:	Inhibin alpha (INHA) (NM_002191) Human Tagged ORF Clone
Tag:	Myc-DDK
Symbol:	Inhibin alpha
Mammalian Cell Selection:	Neomycin
Vector:	pCMV6-Entry (PS100001)
E. coli Selection:	Kanamycin (25 ug/mL)
ORF Nucleotide Sequence:	>RC202819 ORF sequence Red=Cloning site Blue=ORF Green=Tags(s)

TTTTGTAATACGACTCACTATAGGGCGGCCGGAATTCGTCGACTGGATCCGGTACCGAGGAGATCTGCC  
GCC**CGATCGCC**

ATGGTGTGCACCTACTGCTCTTCTTGCTGCTGACCCACAGGGTGGGCACAGCTGCCAGGGGCTGGAGC  
TGGCCCGGAACCTGTTCTGGCCAAGGTGAGGGCCCTGTTCTTGGATGCCTTGGGGCCCCCGCGGTGAC  
CAGGGAAGGTGGGGACCTGGAGTCAGGCGGCTGCCCCGAAGACATGCCCTGGGGGGCTTACACACAGG  
GGCTCTGAGCCCAGGAAGAGGAGGATGTCTCCAAGCCATCCTTTCCAGCCACAGATGCCAGCTGTG  
AGGACAAGTCAGCTGCCAGAGGGCTGGCCAGGAGGCTGAGGAGGGCCTTTCAGATACATGTTCCGGCC  
ATCCCAGCATACACGCAGCCGCCAGGTGACTTCAGCCCAGCTGTGGTTCCACACCGGGCTGGACAGGCAG  
GGCACAGCAGCCTCCAATAGCTCTGAGCCCTGTAGGCCTGCTGGCACTGTACCCGGGAGGACCCGTGG  
CTGTGCCCATGTCTTTGGGCCATGCTCCCCCTCACTGGGCCGTGCTGCACCTGGCCACCTCTGCTCTCTC  
TCTGCTGACCCACCCCGTCTGGTGTGCTGCTGCGCTGTCCCCTCTGTACCTGCTCAGCCCGCCCTGAG  
GCCACGCCCTTCTGGTGGCCCACTCGGACCAGACCACCCAGTGGAGGGGAGAGGCCGACGCTCAA  
CTCCCCTGATGTCCTGGCCTTGGTCTCCCTCTGCTCTGCGCTGTGCAGAGGCCCTCCGGAGGAACCGGC  
TGCCCATGCCAACTGCCACAGTAGCACTGAACATCTCCTTCCAGGAGCTGGGCTGGGAACGGTGGATC  
GTGTACCTCCCAGTTTCATCTTCCACTACTGTATGGTGGTGTGGGCTGCACATCCACCAAACCTGT  
CCCTTCCAGTCCCTGGGGCTCCCCCTACCCAGCCAGCCCTACTCCTTGTGCTGCCAGGGGCCAGCCCTG  
CTGTGCTGCTCTCCAGGGACCATGAGGCCCTACATGTCCGCACCACCTCGGATGGAGGTTACTCTTTT  
AAGTATGAGACAGTGCCCAACCTTCTCACGCAGCACTGTGCTTGTATC

**ACGCGT**ACGCGGCCGCTCGAGCAGAACTCATCTCAGAAGAGGATCTGGCAGCAAATGATATCCTGGATT  
ACAAGGATGACGACGATAAGGTTTAA



[View online »](#)

**Protein Sequence:** >RC202819 protein sequence  
Red=Cloning site Green=Tags(s)

MVLHLLFLLLTPQGGHSCQGLELARELVLAKVRALFLDALGPPAVTREGGDPGVRRLPRRHALGGFTHR  
 GSEPEEEEEVSQAIFPATDASCEDKSAARGLAQEAEEGLFRYMFRRPSQHTRSQRQVTSACLWFHTGLDRQ  
 GTAASNSSEPLLGLLALSPGGPVAVPMSLGHAPPHWAVLHLATSALLTHPVLVLLLRCPLECTCSARPE  
 ATPFLVAHTRTRPPSSGGERARRSTPLMSWPWSPSALRLLQRPPEEPAAHANCHRVALNISFQELGWERWI  
 VYPPSFIFHYCHGGCLHIPPNLSLPVPGAPPTPAQPYSLPGAQPCCAALPGTMRPLHVRTTSDGGYSF  
 KYETVPNLLTQHACAI

TRTRPLEQKLISEEDLAANDILDYKDDDDKV

**Chromatograms:** [https://cdn.origene.com/chromatograms/mk6076\\_e02.zip](https://cdn.origene.com/chromatograms/mk6076_e02.zip)

**Restriction Sites:** Sgfl-MluI

**Cloning Scheme:**

Cloning sites used for ORF Shuttling:



\* The last codon before the Stop codon of the ORF

**ACCN:** NM\_002191

**ORF Size:** 1098 bp

**OTI Disclaimer:** The molecular sequence of this clone aligns with the gene accession number as a point of reference only. However, individual transcript sequences of the same gene can differ through naturally occurring variations (e.g. polymorphisms), each with its own valid existence. This clone is substantially in agreement with the reference, but a complete review of all prevailing variants is recommended prior to use. [More info](#)

**OTI Annotation:** This clone was engineered to express the complete ORF with an expression tag. Expression varies depending on the nature of the gene.

**Components:** The ORF clone is ion-exchange column purified and shipped in a 2D barcoded Matrix tube containing 10ug of transfection-ready, dried plasmid DNA (reconstitute with 100 ul of water).

**Reconstitution Method:**

1. Centrifuge at 5,000xg for 5min.
2. Carefully open the tube and add 100ul of sterile water to dissolve the DNA.
3. Close the tube and incubate for 10 minutes at room temperature.
4. Briefly vortex the tube and then do a quick spin (less than 5000xg) to concentrate the liquid at the bottom.
5. Store the suspended plasmid at -20°C. The DNA is stable for at least one year from date of shipping when stored at -20°C.

**RefSeq:** [NM\\_002191.4](#)

**RefSeq Size:** 1436 bp

**RefSeq ORF:** 1101 bp

**Locus ID:** 3623

**UniProt ID:** [P05111](#)

**Cytogenetics:** 2q35

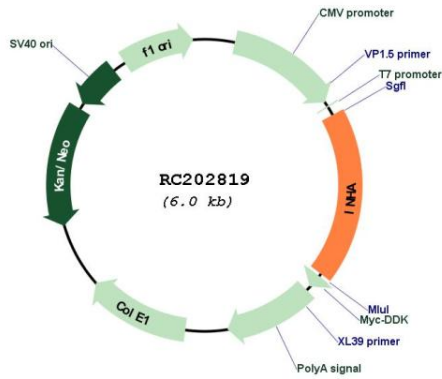
**Domains:** TGF-beta

**Protein Families:** Druggable Genome, Secreted Protein

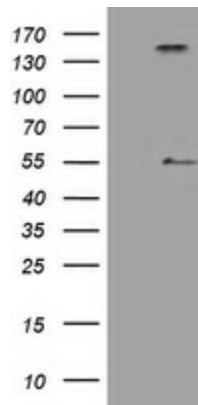
**MW:** 39.7 kDa

**Gene Summary:** This gene encodes a member of the TGF-beta (transforming growth factor-beta) superfamily of proteins. The encoded preproprotein is proteolytically processed to generate multiple peptide products, including the alpha subunit of the inhibin A and B protein complexes. These complexes negatively regulate follicle stimulating hormone secretion from the pituitary gland. Inhibins have also been implicated in regulating numerous cellular processes including cell proliferation, apoptosis, immune response and hormone secretion. Mutations in this gene may be associated with male infertility and premature ovarian failure in female human patients. [provided by RefSeq, Aug 2016]

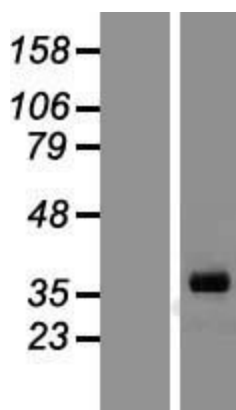
Product images:



Circular map for RC202819



HEK293T cells were transfected with the pCMV6-ENTRY control (Cat# [PS100001], Left lane) or pCMV6-ENTRY INHA (Cat# RC202819, Right lane) cDNA for 48 hrs and lysed. Equivalent amounts of cell lysates (5 ug per lane) were separated by SDS-PAGE and immunoblotted with anti-INHA (Cat# [TA801920]). Positive lysates [LY419480] (100ug) and [LC419480] (20ug) can be purchased separately from OriGene.



Western blot validation of overexpression lysate (Cat# [LY419480]) using anti-DDK antibody (Cat# [TA50011-100]). Left: Cell lysates from untransfected HEK293T cells; Right: Cell lysates from HEK293T cells transfected with RC202819 using transfection reagent MegaTran 2.0 (Cat# [TT210002]).