

Product datasheet for **RC202818**

AP1M2 (NM_005498) Human Tagged ORF Clone

Product data:

Product Type:	Expression Plasmids
Product Name:	AP1M2 (NM_005498) Human Tagged ORF Clone
Tag:	Myc-DDK
Symbol:	AP1M2
Synonyms:	AP1-mu2; HSMU1B; MU-1B; MU1B; mu2
Mammalian Cell Selection:	Neomycin
Vector:	pCMV6-Entry (PS100001)
E. coli Selection:	Kanamycin (25 ug/mL)



[View online »](#)

ORF Nucleotide Sequence:

>RC202818 ORF sequence
 Red=Cloning site Blue=ORF Green=Tags(s)

TTTTGTAATACGACTCACTATAGGGCGGCCGGAATTCGTCGACTGGATCCGGTACCGAGGAGATCTGCC
 GCC**CGGATCGCC**

ATGTCGCCTCGGCTGTCTTCATTCTGGACGTTAAGGGCAAGCCATTGATCAGCCCAACTACAAGGGCG
 ATGTGGCCATGAGCAAGATTGAGCACTTATGCCTTTGCTGGTACAGCGGAGGAGGAAGGGCCCTGGC
 CCCGCTGCTGAGCCACGGCCAGGTCCACTTCTATGGATCAAACACAGCAACCTCTACTTGGTGGCCACC
 ACATCGAAGAATGCCAATGCCTCCCTGGTGTACTCCTTCTGTATAAGACAATAGAGGTATTCTGCGAAT
 ACTTCAAGGAGCTGGAGGAGGAGAGCATCCGGGACAACCTTGTGCATCGTCTACGAGTTGCTGGACGAGCT
 CATGGACTTTGGCTTCCCGCAGACCACCGACAGCAAGATCCTGCAGGAGTACATCACTCAGCAGAGCAAC
 AAGCTGGAGACGGCAAGTCACGGGTGCCACCCACTGTCAACACGCTGTGTCTGGCGCTCCGAGGGTA
 TCAAGTATAAGAAGAACGAGGTCTTCATTGATGTCATAGAGTCTGTCAACCTGCTGGTCAATGCCAACGG
 CAGCGTCTTCTGAGCGAAATCGTCGGTACCATCAAGCTCAAGGTGTTTCTGTGCGGAATGCCAGAGCTG
 CGGCTGGCCCTCAATGACCGCGTCTCTTCGAGCTCACTGGCCTTTCAGGCAGCAAGAACAATCAGTAG
 AGCTGGAGGATGTAAAATCCACCAAGTGCCTGCGGCTCTCTCGCTTTGACAACGACCCGACCATCTCCTT
 CATCCGCCTGATGGTACTTTGAGCTCATGTACATACCGCCTCAGCACCCAGGTCAAGCCACTGATCTGG
 ATTGAGTCTGTCAATTGAGAAGTTCTCCACAGCCCGTGGAGATCATGGTCAAGGCCAAGGGGCAGTTTA
 AGAAACAGTCAGTGGCCAACGGTGTGGAGATATCTGTGCCTGTACCCAGCGATGCCGACTCCCCAGATT
 CAAGACCAGTGTGGGACGCCAAGTATGTGCCGAGAGAAACGTCGTGATTTGGAGTATTAAGTCTTTC
 CCGGGGGCAAGGAGTACTTGTGCGAGCCACTTTGGCTCCCCGTGTGAAAAGGAAGAGGTGGAGG
 GCCGGCCCCCATCGGGTCAAGTTTGTGATCCCTACTTCACCGTCTCTGGGATCCAGGTCCGATACAT
 GAAGATCATTGAGAAAAGTGGTTACCAGGCCCTGCCCTGGGTTGCTACATCACCCAGAGTGGCGATTAC
 CAACTTCGTACCAGC

ACGCGTACGCGGCCGCTCGAGCAGAAACTCATCTCAGAAGAGGATCTGGCAGCAAATGATATCCTGGATT
 ACAAGGATGACGACGATAAGGTTTAA

Protein Sequence:

>RC202818 protein sequence
 Red=Cloning site Green=Tags(s)

MSASAVFILDVKGKPLISRNYKGDVAMSKIEHFMPLLVQREEEGALAPLLSHGQVHFLWIKHSNLYLVAT
 TSKNANASLVYSFLYKTIEVFCEYFKELEESIRDNFVIYVELLDELMDFGFPQTDSKILQEYITQSN
 KLETGKSRVPPTVTNAVSWRSEGIKYKNEVFIDVIESVNLLVNANGSVLLSEIVGTIKLVFLSGMPEL
 RLGLNDRVLFELTGLSGSKNKSVELEDVKFHQCVRLSRFDNDRTISFIPPDGDFELMSYRLSTQVKPLIW
 IESVIEKFSHSRVEIMVKAKGQFKKQSVANGVEISVPVPSDADSPRFKTSVGSAYVPERNVVIWSIKSF
 PGGKEYLMRAHFGLPRVEKEEVEGRPPIGVKFEIPYFTVSGIQVRYMKIIEKSGYQALPWVRYITQSGDY
 QLRTS

TRTRPLEQKLISEEDLAANDILDYKDDDDKV

Chromatograms:

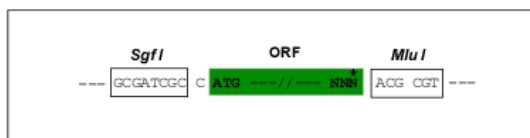
https://cdn.origene.com/chromatograms/mk6668_c10.zip

Restriction Sites:

Sgfl-Mlul

Cloning Scheme:

Cloning sites used for ORF Shutting:



* The last codon before the Stop codon of the ORF

ACCN: NM_005498

ORF Size: 1275 bp

OTI Disclaimer: The molecular sequence of this clone aligns with the gene accession number as a point of reference only. However, individual transcript sequences of the same gene can differ through naturally occurring variations (e.g. polymorphisms), each with its own valid existence. This clone is substantially in agreement with the reference, but a complete review of all prevailing variants is recommended prior to use. [More info](#)

OTI Annotation: This clone was engineered to express the complete ORF with an expression tag. Expression varies depending on the nature of the gene.

Components: The ORF clone is ion-exchange column purified and shipped in a 2D barcoded Matrix tube containing 10ug of transfection-ready, dried plasmid DNA (reconstitute with 100 ul of water).

Reconstitution Method:

1. Centrifuge at 5,000xg for 5min.
2. Carefully open the tube and add 100ul of sterile water to dissolve the DNA.
3. Close the tube and incubate for 10 minutes at room temperature.
4. Briefly vortex the tube and then do a quick spin (less than 5000xg) to concentrate the liquid at the bottom.
5. Store the suspended plasmid at -20°C. The DNA is stable for at least one year from date of shipping when stored at -20°C.

RefSeq: [NM_005498.5](#)
RefSeq Size: 1756 bp

RefSeq ORF: 1272 bp

Locus ID: 10053

UniProt ID: [Q9Y6Q5](#)
Cytogenetics: 19p13.2

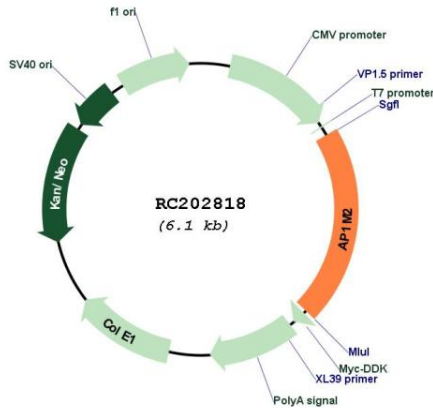
Domains: Adap_comp_sub

Protein Pathways: Lysosome

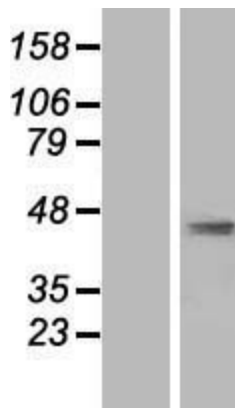
MW: 48.3 kDa

Gene Summary: This gene encodes a subunit of the heterotetrameric adaptor-related protein complex 1 (AP-1), which belongs to the adaptor complexes medium subunits family. This protein is capable of interacting with tyrosine-based sorting signals. Alternative splicing results in multiple transcript variants. [provided by RefSeq, Jul 2014]

Product images:



Circular map for RC202818



Western blot validation of overexpression lysate (Cat# [LY417266]) using anti-DDK antibody (Cat# [TA50011-100]). Left: Cell lysates from untransfected HEK293T cells; Right: Cell lysates from HEK293T cells transfected with RC202818 using transfection reagent MegaTran 2.0 (Cat# [TT210002]).