

Product datasheet for **RC202816**

Cytochrome b c1 complex subunit 9 (UQCR10) (NM_013387) Human Tagged ORF Clone

Product data:

Product Type: Expression Plasmids
Product Name: Cytochrome b c1 complex subunit 9 (UQCR10) (NM_013387) Human Tagged ORF Clone
Tag: Myc-DDK
Symbol: Cytochrome b c1 complex subunit 9
Synonyms: HSPC051; HSPC119; HSPC151; QCR9; UCCR7.2; UCRC
Mammalian Cell Selection: Neomycin
Vector: pCMV6-Entry (PS100001)
E. coli Selection: Kanamycin (25 ug/mL)
ORF Nucleotide Sequence: >RC202816 ORF sequence
Red=Cloning site Blue=ORF Green=Tags(s)

TTTTGTAATACGACTCACTATAGGGCGGCCGGAATTCGTCGACTGGATCCGGTACCGAGGAGATCTGCC
GCC**CGATCGCC**

ATGGCGGCCGCGACGTTGACTTCGAAGTTGTA**CTCCCTGCTGTTCCGCAGGACCTCCACCTTCGCCCTCA**
CCATCATCGTGGCGTCATGTTCTTCGAGCGGCCTTCGATCAAGGCGCGGACGCTATCTACGACCACAT
CAACGAGGGGAAGCTGTGGAAACACATCAAGCACAAAGTATGAGAACAAG

ACGCGTACGCGGCCGCTCGAGCAGAACTCATCTCAGAAGAGGATCTGGCAGCAAATGATATCCTGGATT
ACAAGGATGACGACGATAAGGTTTAA

Protein Sequence: >RC202816 protein sequence
Red=Cloning site Green=Tags(s)
MAAATLSKLYSLLFRRTSTFALTIIVGMFFERAFDQGADAIYDHINEGKLWKHIKHKYENK
TRTRPLEQKLISEEDLAANDILDYKDDDDKV

Chromatograms: https://cdn.origene.com/chromatograms/mk6414_c11.zip

Restriction Sites: Sgfl-MluI



[View online »](#)

Cloning Scheme:



ACCN: NM_013387

ORF Size: 189 bp

OTI Disclaimer: The molecular sequence of this clone aligns with the gene accession number as a point of reference only. However, individual transcript sequences of the same gene can differ through naturally occurring variations (e.g. polymorphisms), each with its own valid existence. This clone is substantially in agreement with the reference, but a complete review of all prevailing variants is recommended prior to use. [More info](#)

OTI Annotation: This clone was engineered to express the complete ORF with an expression tag. Expression varies depending on the nature of the gene.

Components: The ORF clone is ion-exchange column purified and shipped in a 2D barcoded Matrix tube containing 10ug of transfection-ready, dried plasmid DNA (reconstitute with 100 ul of water).

Reconstitution Method:

1. Centrifuge at 5,000xg for 5min.
2. Carefully open the tube and add 100ul of sterile water to dissolve the DNA.
3. Close the tube and incubate for 10 minutes at room temperature.
4. Briefly vortex the tube and then do a quick spin (less than 5000xg) to concentrate the liquid at the bottom.
5. Store the suspended plasmid at -20°C. The DNA is stable for at least one year from date of shipping when stored at -20°C.

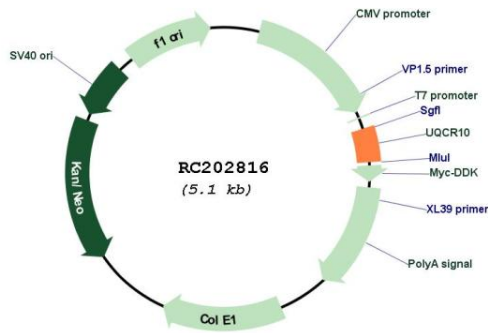
RefSeq: [NM_013387.2](#)

RefSeq Size: 934 bp

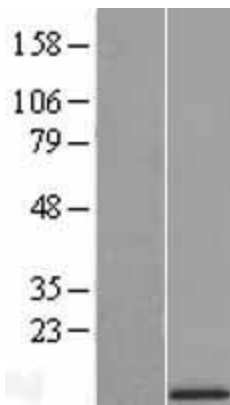
RefSeq ORF: 192 bp

Locus ID: 29796
UniProt ID: [Q9UDW1](#)
Cytogenetics: 22q12.2
Protein Families: Transmembrane
Protein Pathways: Alzheimer's disease, Cardiac muscle contraction, Huntington's disease, Metabolic pathways, Oxidative phosphorylation, Parkinson's disease
MW: 7.3 kDa
Gene Summary: UCRC is a subunit of mitochondrial complex III (ubiquinol-cytochrome c reductase; EC 1.10.2.2), which forms the middle segment of the respiratory chain of the inner mitochondrial membrane (Schagger et al., 1995 [PubMed 8592474]).[supplied by OMIM, Mar 2008]

Product images:



Circular map for RC202816



Western blot validation of overexpression lysate (Cat# [LY415610]) using anti-DDK antibody (Cat# [TA50011-100]). Left: Cell lysates from untransfected HEK293T cells; Right: Cell lysates from HEK293T cells transfected with RC202816 using transfection reagent MegaTran 2.0 (Cat# [TT210002]).