

## Product datasheet for **RC202811**

### NSL1 (NM\_015471) Human Tagged ORF Clone

#### Product data:

Product Type:	Expression Plasmids
Product Name:	NSL1 (NM_015471) Human Tagged ORF Clone
Tag:	Myc-DDK
Symbol:	NSL1
Synonyms:	C1orf48; DC8; MIS14
Mammalian Cell Selection:	Neomycin
Vector:	pCMV6-Entry (PS100001)
E. coli Selection:	Kanamycin (25 ug/mL)
ORF Nucleotide Sequence:	>RC202811 ORF sequence Red=Cloning site Blue=ORF Green=Tags(s)

TTTGTAAATACGACTCACTATAGGGCGGCCGGAATTCGTCGACTGGATCCGGTACCGAGGAGATCTGCC  
GCC**CGATCGC**

ATGGCGGGGTTTCCTGAGTTGGTGGTCCTTGACCCTCCATGGGACAAGGAGCTCGCGGTGGCACAGAGA  
GCCAGGCCTTGGTCTCCGCCACTCCCCGAGAAGACTTTCGGGTGCGCTGCACCTCGAAGCGGGCTGTGAC  
CGAAATGCTACAACGTGCGGCCGCTTCGTGCAAAAGCTCGGGGACGCTCTGCCGAGGAGATTCGGGAG  
CCCGCTCTGCGAGATGCGCAGTGGACTTTGAATCAGCTGTGCAAGAGAATATCAGCATTAAATGGGCAAG  
CATGGCAGGAAGCTTCAGATAATTGTTTTATGGATTCTGACATCAAAGTACTTGAAGATCAGTTTGATGA  
AATCATAGTAGATATAGCCACAAACGTAAGCAGTATCCAGAAAGATCCTGGAATGTGTATCAAACCC  
ATAAAAGCAAAACAAGAAATCTGAAGCAGTACCACCCTGTTGTACATCCACTGGACCTAAAATATGACC  
CTGATCCAGCCCCCTCATATGGAAAATTTGAAATGCAGAGGGGAAACAGTAGCAAAGGAGATCAGTGAAGC  
CATGAAGTCCTTGCCCTGCATTAATTGAACAAGGAGAGGGATTTTCCCAAGTTCTCAGGATGCAGCCTGTT  
ATCCACCTCCAGAGGATTCACCAAGAAGTCTTTCCAGTTGTATAGGAAACAGATGCTAAACCTGAGA  
ACTTTATAACACAGATAGAAACCAACACAGAGACTGCTTCCAGGAAAACCTCTGACGTGGTACTGAA  
AAGAAAGCAAACCTAAAGACTGCCCCAGAGAAAATGGTATCCATTGCGGCCAAAGAAAATTAATCTTGAT  
ACA

**ACGCGT**ACGCGGCCGCTCGAGCAGAACTCATCTCAGAAGAGGATCTGGCAGCAAATGATATCCTGGATT  
ACAAGGATGACGACGATAAGGTTTAA



[View online »](#)

**Protein Sequence:** >RC202811 protein sequence  
 Red=Cloning site Green=Tags(s)

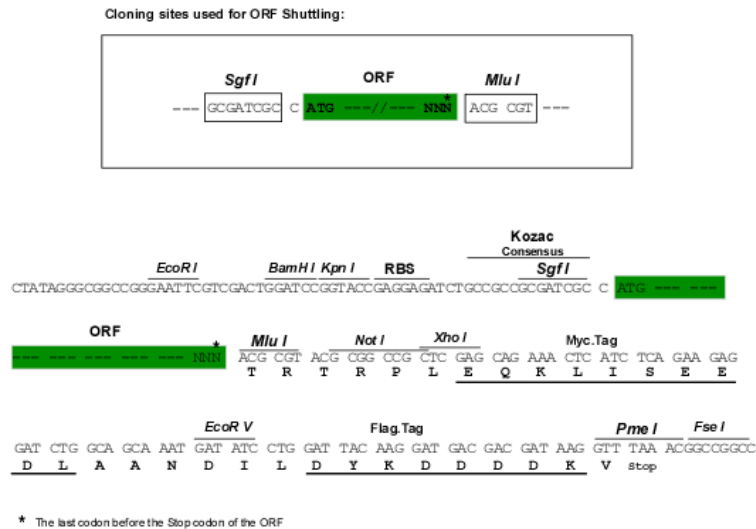
MAGFPELVVLDPPWDKELAAGTESQALVSATPREDFRVRCTSKRAVTEMLQLCGRFVQKLGDALPEEIRE  
 PALRDAQWTFESAVQENISINGQAWQEASDNCFMDSDIKVLQFDEIIVDIATKRKQYPRKILECVIKT  
 IKAKQEILKQYHPVVHPLDLKYDPDPAPHMENLKCRGETVAKEISEAMKSLPALIEQGEQFVQLRMQPV  
 IHLQRIHQEVFSSCHRPDAKPENFITQIETTPETASRKTSDVVLKRKQTKDCPQRKWYPLRPKKINLD  
 T

TRTRPLEQKLISEEDLAANDILDYKDDDDKV

**Chromatograms:** [https://cdn.origene.com/chromatograms/mk6415\\_c06.zip](https://cdn.origene.com/chromatograms/mk6415_c06.zip)

**Restriction Sites:** SgfI-MluI

**Cloning Scheme:**



**ACCN:** NM\_015471

**ORF Size:** 843 bp

**OTI Disclaimer:** The molecular sequence of this clone aligns with the gene accession number as a point of reference only. However, individual transcript sequences of the same gene can differ through naturally occurring variations (e.g. polymorphisms), each with its own valid existence. This clone is substantially in agreement with the reference, but a complete review of all prevailing variants is recommended prior to use. [More info](#)

**OTI Annotation:** This clone was engineered to express the complete ORF with an expression tag. Expression varies depending on the nature of the gene.

**Components:** The ORF clone is ion-exchange column purified and shipped in a 2D barcoded Matrix tube containing 10ug of transfection-ready, dried plasmid DNA (reconstitute with 100 ul of water).

**Reconstitution Method:**

1. Centrifuge at 5,000xg for 5min.
2. Carefully open the tube and add 100ul of sterile water to dissolve the DNA.
3. Close the tube and incubate for 10 minutes at room temperature.
4. Briefly vortex the tube and then do a quick spin (less than 5000xg) to concentrate the liquid at the bottom.
5. Store the suspended plasmid at -20°C. The DNA is stable for at least one year from date of shipping when stored at -20°C.

**Note:** Plasmids are not sterile. For experiments where strict sterility is required, filtration with 0.22um filter is required.

**RefSeq:** [NM\\_015471.4](#)

**RefSeq Size:** 13148 bp

**RefSeq ORF:** 846 bp

**Locus ID:** 25936

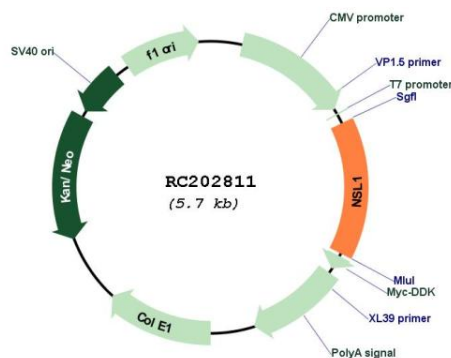
**UniProt ID:** [Q96IY1](#)

**Cytogenetics:** 1q32.3

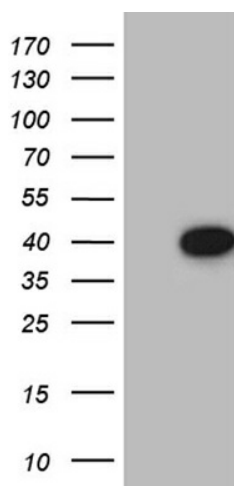
**MW:** 32.2 kDa

**Gene Summary:** This gene encodes a protein with two coiled-coil domains that localizes to kinetochores, which are chromosome-associated structures that attach to microtubules and mediate chromosome movements during cell division. The encoded protein is part of a conserved protein complex that includes two chromodomain-containing proteins and a component of the outer plate of the kinetochore. This protein complex is proposed to bridge centromeric heterochromatin with the outer kinetochore structure. Multiple transcript variants encoding different isoforms have been found for this gene. There is a pseudogene of the 3' UTR region of this gene on chromosome X. [provided by RefSeq, Jul 2014]

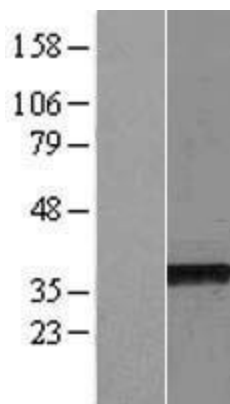
## Product images:



Circular map for RC202811



HEK293T cells were transfected with the pCMV6-ENTRY control (Cat# [PS100001], Left lane) or pCMV6-ENTRY NSL1 (Cat# RC202811, Right lane) cDNA for 48 hrs and lysed. Equivalent amounts of cell lysates (5 ug per lane) were separated by SDS-PAGE and immunoblotted with anti-NSL1 (Cat# [TA811311])(1:2000). Positive lysates [LY414523] (100ug) and [LC414523] (20ug) can be purchased separately from OriGene.



Western blot validation of overexpression lysate (Cat# [LY414523]) using anti-DDK antibody (Cat# [TA50011-100]). Left: Cell lysates from untransfected HEK293T cells; Right: Cell lysates from HEK293T cells transfected with RC202811 using transfection reagent MegaTran 2.0 (Cat# [TT210002]).