

## Product datasheet for RC202802

### Serum Amyloid P (APCS) (NM\_001639) Human Tagged ORF Clone

#### Product data:

Product Type:	Expression Plasmids
Product Name:	Serum Amyloid P (APCS) (NM_001639) Human Tagged ORF Clone
Tag:	Myc-DDK
Symbol:	Serum Amyloid P
Synonyms:	HEL-S-92n; PTX2; SAP
Mammalian Cell Selection:	Neomycin
Vector:	pCMV6-Entry (PS100001)
E. coli Selection:	Kanamycin (25 ug/mL)
ORF Nucleotide Sequence:	>RC202802 ORF sequence Red=Cloning site Blue=ORF Green=Tags(s)

TTTTGTAATACGACTCACTATAGGGCGGCCGGAATTCGTCGACTGGATCCGGTACCGAGGAGATCTGCC  
GCC**CGATCGCC**

ATGAACAAGCCGCTGCTTTGGATCTCTGTCTCACCAGCCTCCTGGAAGCCTTTGCTCACACAGACCTCA  
GTGGGAAGGTGTTTGTATTTCTAGAGAATCTGTTACTGATCATGTAACCTTGATCACACCGCTGGAGAA  
GCCTCTACAGAACTTTACCTTGTGTTTTCGAGCCTATAGTGATCTCTCTCGTGCCTACAGCCTCTTCTCC  
TACAATACCAAGGCAGGATAATGAGCTACTAGTTTATAAAGAAAGAGTTGGAGAGTATAGTCTATACA  
TTGGAAGACACAAAGTTACATCCAAAGTTATCGAAAAGTTCCCGCTCCAGTGCACATCTGTGTGAGCTG  
GGAGTCTCATCAGGATTGCTGAATTTGGATCAATGGGACACCTTTGGTGAAAAGGGTCTGCGACAG  
GGTTACTTTGTGGAAGCTCAGCCCAAGATTGTCCTGGGGCAGGAACAGGATTCCTATGGGGCAAGTTTG  
ATAGGAGCCAGTCCTTTGTGGGAGAGATTGGGGATTTGTACATGTGGGACTCTGTGCTGCCCCAGAAAA  
TATCTGTCTGCCTATCAGGGTACCCCTCTCCCTGCCAATATCCTGGACTGGCAGGCTCTGAACTATGAA  
ATCAGAGGATATGTCATCATCAAACCTTGGTGTGGTC

**ACGCGT**ACGCGGCCGCTCGAGCAGAACTCATCTCAGAAGAGGATCTGGCAGCAATGATATCTGGATT  
ACAAGGATGACGACGATAAGGTTTAA



[View online »](#)

**Protein Sequence:** >RC202802 protein sequence  
Red=Cloning site Green=Tags(s)

MNKPLLWISVLTSLLEAFAHTDL SGKVFVFPRESVTDHVNLI TPLEKPLQNFTLCFRAYS DLSRAYSLFS  
 YNTQGRDNELLVYKERVGEYSLYIGRHKVT SKVIEKFPAPVHICVSWESSGIAEFWINGTPLVKKGLRQ  
 GYFVEAQPKIVLGQEQDSYGGKFD RSQSFSVGEIGDLYMWD SVLPPENILSAYQGTPLPANILDWQALNYE  
 IRGYV I IKPLVWV

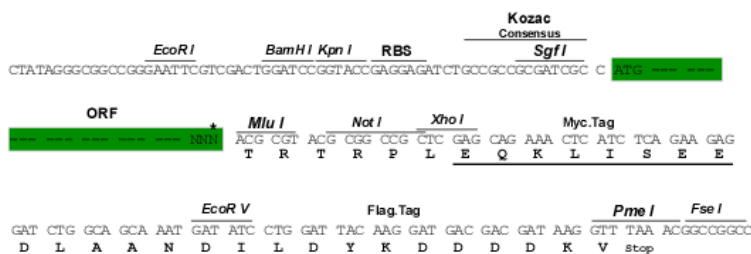
TRTRPLEQKLISEEDLAANDILDYKDDDDKV

**Chromatograms:** [https://cdn.origene.com/chromatograms/mk6079\\_e02.zip](https://cdn.origene.com/chromatograms/mk6079_e02.zip)

**Restriction Sites:** SgfI-MluI

**Cloning Scheme:**

Cloning sites used for ORF Shuttling:



\* The last codon before the Stop codon of the ORF

**ACCN:** NM\_001639

**ORF Size:** 669 bp

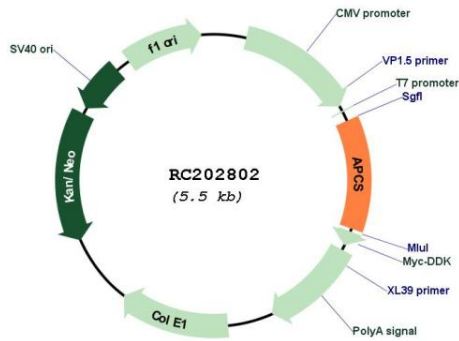
**OTI Disclaimer:** The molecular sequence of this clone aligns with the gene accession number as a point of reference only. However, individual transcript sequences of the same gene can differ through naturally occurring variations (e.g. polymorphisms), each with its own valid existence. This clone is substantially in agreement with the reference, but a complete review of all prevailing variants is recommended prior to use. [More info](#)

**OTI Annotation:** This clone was engineered to express the complete ORF with an expression tag. Expression varies depending on the nature of the gene.

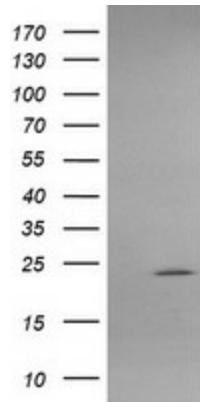
**Components:** The ORF clone is ion-exchange column purified and shipped in a 2D barcoded Matrix tube containing 10ug of transfection-ready, dried plasmid DNA (reconstitute with 100 ul of water).

<b>Reconstitution Method:</b>	<ol style="list-style-type: none"><li>1. Centrifuge at 5,000xg for 5min.</li><li>2. Carefully open the tube and add 100ul of sterile water to dissolve the DNA.</li><li>3. Close the tube and incubate for 10 minutes at room temperature.</li><li>4. Briefly vortex the tube and then do a quick spin (less than 5000xg) to concentrate the liquid at the bottom.</li><li>5. Store the suspended plasmid at -20°C. The DNA is stable for at least one year from date of shipping when stored at -20°C.</li></ol>
<b>Note:</b>	Plasmids are not sterile. For experiments where strict sterility is required, filtration with 0.22um filter is required.
<b>RefSeq:</b>	<u><a href="#">NM_001639.2</a></u> , <u><a href="#">NP_001630.1</a></u>
<b>RefSeq Size:</b>	960 bp
<b>RefSeq ORF:</b>	672 bp
<b>Locus ID:</b>	325
<b>UniProt ID:</b>	<u><a href="#">P02743</a></u>
<b>Cytogenetics:</b>	1q23.2
<b>Domains:</b>	PTX
<b>Protein Families:</b>	Druggable Genome, Secreted Protein
<b>MW:</b>	25.4 kDa
<b>Gene Summary:</b>	The protein encoded by this gene is a glycoprotein, belonging to the pentraxin family of proteins, which has a characteristic pentameric organization. These family members have considerable sequence homology which is thought to be the result of gene duplication. The binding of the encoded protein to proteins in the pathological amyloid cross-beta fold suggests its possible role as a chaperone. This protein is also thought to control the degradation of chromatin. It has been demonstrated that this protein binds to apoptotic cells at an early stage, which raises the possibility that it is involved in dealing with apoptotic cells in vivo. [provided by RefSeq, Sep 2008]

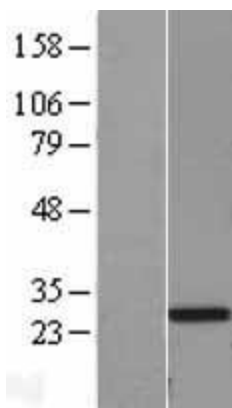
Product images:



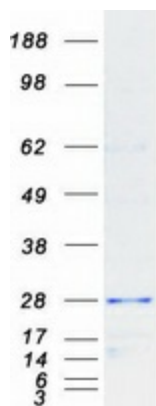
Circular map for RC202802



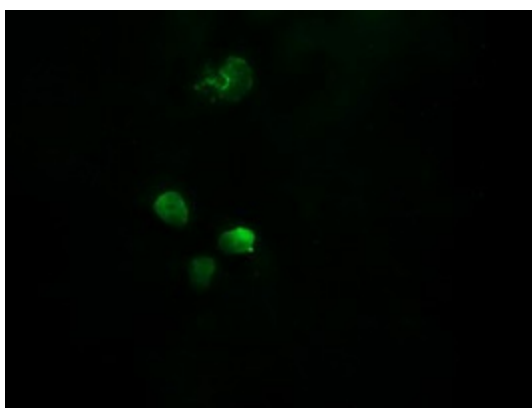
HEK293T cells were transfected with the pCMV6-ENTRY control (Cat# [PS100001], Left lane) or pCMV6-ENTRY APCS (Cat# RC202802, Right lane) cDNA for 48 hrs and lysed. Equivalent amounts of cell lysates (5 ug per lane) were separated by SDS-PAGE and immunoblotted with anti-APCS (Cat# [TA505248]). Positive lysates [LY400617] (100ug) and [LC400617] (20ug) can be purchased separately from OriGene.



Western blot validation of overexpression lysate (Cat# [LY400617]) using anti-DDK antibody (Cat# [TA50011-100]). Left: Cell lysates from untransfected HEK293T cells; Right: Cell lysates from HEK293T cells transfected with RC202802 using transfection reagent MegaTran 2.0 (Cat# [TT210002]).



Coomassie blue staining of purified APCS protein (Cat# [TP302802]). The protein was produced from HEK293T cells transfected with APCS cDNA clone (Cat# RC202802) using MegaTran 2.0 (Cat# [TT210002]).



Anti-APCS mouse monoclonal antibody ([TA505248]) immunofluorescent staining of COS7 cells transiently transfected by pCMV6-ENTRY APCS (RC202802).