

## Product datasheet for **RC202795**

### MRPS18B (NM\_014046) Human Tagged ORF Clone

#### Product data:

|                           |   |
|---------------------------|---|
| Product Type:             | Expression Plasmids   |
| Product Name:             | MRPS18B (NM_014046) Human Tagged ORF Clone                        |
| Tag:                      | Myc-DDK   |
| Symbol:                   | MRPS18B   |
| Synonyms:                 | C6orf14; HSPC183; HumanS18a; MRP-S18-2; MRPS18-2; PTD017; S18amt  |
| Mammalian Cell Selection: | Neomycin  |
| Vector:                   | pCMV6-Entry (PS100001)  |
| E. coli Selection:        | Kanamycin (25 ug/mL)  |
| ORF Nucleotide Sequence:  | >RC202795 ORF sequence<br>Red=Cloning site Blue=ORF Green=Tags(s) |

TTTTGTAATACGACTCACTATAGGGCGGCCGGAATTCGTCGACTGGATCCGGTACCGAGGAGATCTGCC  
GCC**CGATCGCC**

ATGGCGGCGTCTGTATTAACACCGTGCTGAGGCGGCTTCCTATGCTATCTCTTCCGAGGTTCTCACA  
GAGTTCAGGTTCCCCTCCAGACTCTTGCACCAAAGCTCCCTCTGAGGAAGATTCTTGTCTCAGTTCC  
CATTTCTCCTTAAAGGATGAGCCCTGAAATATCTGGAATCAGAAGAATACCAGGAGCGATATGGTTCT  
CGCCCCGTCTGGGCTGACTACCGCCGAACCACAAGGGTGGTGTACCCCCACAGCGGACTCGGAAGACAT  
GTATTCGTCGGAATAAAGTTGTTGGGAATCCCTGCCCATCTGTGAGATCACAAGTTGCATGTTGACTT  
TAGGAACGTGAAGCTCTGGAGCAATTTGTCTGCGCCACACGGGTATCATCTTCTATGCTCCATACACA  
GGAGTCTGTGTGAAGCAGCACAAGCGGTTGACCCAGGCCATCCAGAAAGCCAGGGATCATGGTCTCTCA  
TTTACCACATCCCCAGGTTGAACCACGGGACCTTGACTTCAGTACCTCTCATGGGGCTGTGAGTGCTAC  
TCCGCCAGCCCCACCCTGGTCTCAAGTGACCCCTGGTACCCATGGTACAACGGAAACAGCCACCGGAG  
AGAGAACTGTCTCGCCTTCGCCGGCTTTACCAGGGTCTCTCCAAGAAGAGAGTGGCCCCCACCTGAGT  
CAATGCCAAGATGCCCCCTAGAACACCAGCGGAAGCCTCTCCACTGGGAGACAGGCCCTCAGAGTGC  
TCTG

**ACGCGT**ACGCGGCGCTCGAGCAGAACTCATCTCAGAAGAGGATCTGGCAGCAAATGATATCTGGATT  
ACAAGGATGACGACGATAAGGTTTAA



[View online »](#)

**Protein Sequence:** >RC202795 protein sequence  
Red=Cloning site Green=Tags(s)

MAASVLNTVLRRLPMLSLFRGSHRVQVPLQLCTKAPSEEDSLSSVPISPYKDEPWKYLESEEYQERYGS  
 RPVWADYRRNHKGGVPPQRTRKTCIRRNKVVGNPCPICRDHKLHVDFRNVKLLLEQFVCAHTGIIFYAPYT  
 GVCVKQHKRLTQAIQKARDHGLLIYHIPQVEPRDLDFSTSHGAVSATPPAPTLVSSDPWYPWYNWKQPPE  
 RELSRLRRLYQHLQEEGPPPEMPPKMPPTPAEASSTGQTGPQSAL

TRTRPLEQKLISEEDLAANDILDYKDDDDKV

**Chromatograms:** [https://cdn.origene.com/chromatograms/mk6414\\_f05.zip](https://cdn.origene.com/chromatograms/mk6414_f05.zip)

**Restriction Sites:** SgfI-MluI

**Cloning Scheme:**

Cloning sites used for ORF Shuttling:



\* The last codon before the Stop codon of the ORF

**ACCN:** NM\_014046

**ORF Size:** 774 bp

**OTI Disclaimer:** The molecular sequence of this clone aligns with the gene accession number as a point of reference only. However, individual transcript sequences of the same gene can differ through naturally occurring variations (e.g. polymorphisms), each with its own valid existence. This clone is substantially in agreement with the reference, but a complete review of all prevailing variants is recommended prior to use. [More info](#)

**OTI Annotation:** This clone was engineered to express the complete ORF with an expression tag. Expression varies depending on the nature of the gene.

**Components:** The ORF clone is ion-exchange column purified and shipped in a 2D barcoded Matrix tube containing 10ug of transfection-ready, dried plasmid DNA (reconstitute with 100 ul of water).

**Reconstitution Method:**

1. Centrifuge at 5,000xg for 5min.
2. Carefully open the tube and add 100ul of sterile water to dissolve the DNA.
3. Close the tube and incubate for 10 minutes at room temperature.
4. Briefly vortex the tube and then do a quick spin (less than 5000xg) to concentrate the liquid at the bottom.
5. Store the suspended plasmid at -20°C. The DNA is stable for at least one year from date of shipping when stored at -20°C.

**RefSeq:** [NM\\_014046.4](#)

**RefSeq Size:** 1536 bp

**RefSeq ORF:** 777 bp

**Locus ID:** 28973

**UniProt ID:** [Q9Y676](#)

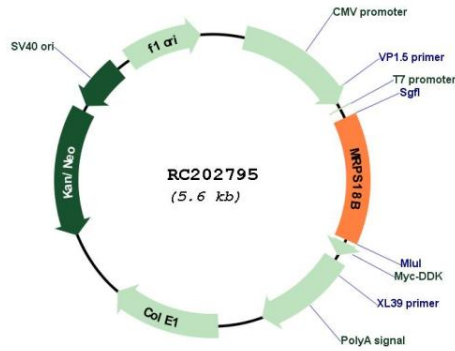
**Cytogenetics:** 6p21.33

**Domains:** Ribosomal\_S18

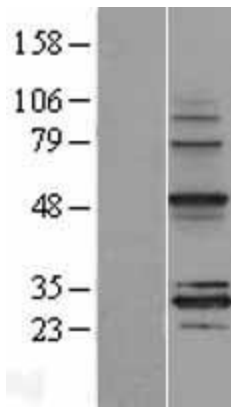
**MW:** 29.4 kDa

**Gene Summary:** Mammalian mitochondrial ribosomal proteins are encoded by nuclear genes and help in protein synthesis within the mitochondrion. Mitochondrial ribosomes (mitoribosomes) consist of a small 28S subunit and a large 39S subunit. They have an estimated 75% protein to rRNA composition compared to prokaryotic ribosomes, where this ratio is reversed. Another difference between mammalian mitoribosomes and prokaryotic ribosomes is that the latter contain a 5S rRNA. Among different species, the proteins comprising the mitoribosome differ greatly in sequence, and sometimes in biochemical properties, which prevents easy recognition by sequence homology. This gene encodes a 28S subunit protein that belongs to the ribosomal protein S18P family. The encoded protein is one of three that has significant sequence similarity to bacterial S18 proteins. The primary sequences of the three human mitochondrial S18 proteins are no more closely related to each other than they are to the prokaryotic S18 proteins. Pseudogenes corresponding to this gene are found on chromosomes 1q and 2q. [provided by RefSeq, Jul 2008]

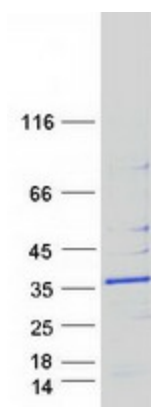
Product images:



Circular map for RC202795



Western blot validation of overexpression lysate (Cat# [LY415507]) using anti-DDK antibody (Cat# [TA50011-100]). Left: Cell lysates from untransfected HEK293T cells; Right: Cell lysates from HEK293T cells transfected with RC202795 using transfection reagent MegaTran 2.0 (Cat# [TT210002]).



Coomassie blue staining of purified MRPS18B protein (Cat# [TP302795]). The protein was produced from HEK293T cells transfected with MRPS18B cDNA clone (Cat# RC202795) using MegaTran 2.0 (Cat# [TT210002]).