

Product datasheet for **RC202791**

Renalase (RNLS) (NM_001031709) Human Tagged ORF Clone

Product data:

Product Type:	Expression Plasmids
Product Name:	Renalase (RNLS) (NM_001031709) Human Tagged ORF Clone
Tag:	Myc-DDK
Symbol:	Renalase
Synonyms:	C10orf59; RENALASE
Mammalian Cell Selection:	Neomycin
Vector:	pCMV6-Entry (PS100001)
E. coli Selection:	Kanamycin (25 ug/mL)
ORF Nucleotide Sequence:	>RC202791 ORF sequence Red=Cloning site Blue=ORF Green=Tags(s)

TTTTGTAATACGACTCACTATAGGGCGCCGGGAATTCGTCGACTGGATCCGGTACCGAGGAGATCTGCC
GCC**CGATCGC**C

ATGGCGCAGGTGCTGATCGTGGGCGCCGGGATGACAGGAAGCTTGTGCGCTGCGCTGCTGAGGAGGCAGA
CGTCCGGTCCCTTGACCTTGCTGTGTGGGACAAGGCTGACGACTCAGGGGAAGAATGACTACAGCCTG
CAGTCCTCATAATCCTCAGTGACAGCTGACTTGGGTGCTCAGTACATCACCTGCACTCCTCATTATGCC
AAAAACACCAACGTTTTATGATGAAGTGTAGCCTATGGCGTTTTGAGGCCTAAGCTCGCCTATTG
AAGGAATGGTGATGAAAGAAGGAGACTGTAACCTTGTGGCACCTCAAGGAATTTCTCAATTATTAAGCA
TTACTTGAAAGAATCAGGTGCAGAAGTCTACTTCAGACATCGTGTGACACAGATCAACCTAAGAGATGAC
AAATGGGAAGTATCCAAACAAACAGGCTCCCCTGAGCAGTTTGATCTTATTGTTCTCACAATGCCAGTTC
CTGAGATTCTGCAGCTTCAAGGTGACATCACCACTTAATTAGTGAATGCCAAAGGCAGCAACTGGAGGC
TGTGAGCTACTCCTCTCGATATGCTCTGGGCTCTTTATGAAGCTGGTACGAAGATTGATGTCCCTTGG
GCTGGGCAGTACATCACCAAGTAAATCCCTGCATACGCTTCGCTCCATTGATAATAAGAAGCGCAATATAG
AGTCATCAGAAATGGGCCTTCCCTCGTATTACACCACTGTCCATTTGGAGTTACATACTTGGAAACA
CAGCATTGAGGATGTGCAAGAGTTAGTCTTCCAGCAGCTGGAAAACATTTGCCGGTTTGCCTCAGCCA
ATTGCTACCAAATGCCAAAATGGAGACATTACAGGTTACAAAATGCTGCTGCCAACTGTCTGGCCAAA
TGACTCTGCATCACAAACCTTTCCTTGCATGTGGAGGGGATGGATTTACTCAGTCCAACCTTGTATGGCTG
CATCACTTCTGCCCTATGTGTTCTGGAAGCTTTAAGAATTATATT

ACGCGTACGCGGCCGCTCGAGCAGAACTCATCTCAGAAGAGGATCTGGCAGCAATGATATCCTGGATT
ACAAGGATGACGACGATAAGGTTTAA



[View online »](#)

Protein Sequence: >RC202791 protein sequence
Red=Cloning site Green=Tags(s)

MAQVLIVGAGMTGSLCAALLRRQTSGLPLYAVWDKADDSGGRMTTACSPHNPQCTADLGAQYITCTPHYA
 KKHQRFYDELLAYGVLRLPLSSPIEGMVMKEGDCNFVAPQGISSIIKHYLKESGAEVYFRHRVTQINLRDD
 KWEVSKQTGSPEQFDLIVLTMPVPEILQLQGDITTLISECQRQQLEAVSYSSRYALGLFYEAGTKIDVPW
 AGQYITSNPCIRFVSIDNKKRNIESSEIGPSLVIHTTVPFGVTYLEHSIEDVQELVFQLENILPGLPQP
 IATKCKQWRHSQVTNAAANCPGQMTLHHKPFACGGDGF TQSNFDGCITSALCVLEALKNYI

TRTRPLEQKLISEEDLAANDILDYKDDDDKV

Chromatograms: https://cdn.origene.com/chromatograms/mk6079_d03.zip

Restriction Sites: SgfI-MluI

Cloning Scheme:



ACCN: NM_001031709

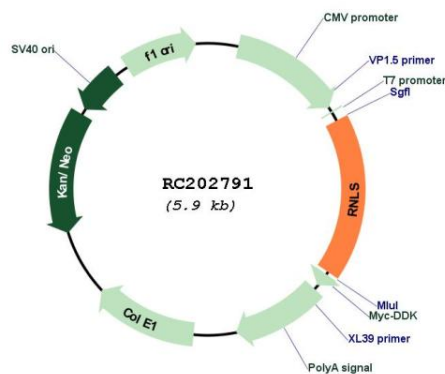
ORF Size: 1026 bp

OTI Disclaimer: Due to the inherent nature of this plasmid, standard methods to replicate additional amounts of DNA in E. coli are highly likely to result in mutations and/or rearrangements. Therefore, OriGene does not guarantee the capability to replicate this plasmid DNA. Additional amounts of DNA can be purchased from OriGene with batch-specific, full-sequence verification at a reduced cost. Please contact our customer care team at custsupport@origene.com or by calling 301.340.3188 option 3 for pricing and delivery.

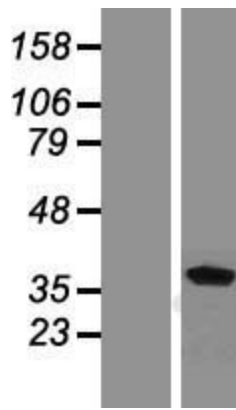
The molecular sequence of this clone aligns with the gene accession number as a point of reference only. However, individual transcript sequences of the same gene can differ through naturally occurring variations (e.g. polymorphisms), each with its own valid existence. This clone is substantially in agreement with the reference, but a complete review of all prevailing variants is recommended prior to use. [More info](#)

OTI Annotation:	This clone was engineered to express the complete ORF with an expression tag. Expression varies depending on the nature of the gene.
Components:	The ORF clone is ion-exchange column purified and shipped in a 2D barcoded Matrix tube containing 10ug of transfection-ready, dried plasmid DNA (reconstitute with 100 ul of water).
Reconstitution Method:	<ol style="list-style-type: none">1. Centrifuge at 5,000xg for 5min.2. Carefully open the tube and add 100ul of sterile water to dissolve the DNA.3. Close the tube and incubate for 10 minutes at room temperature.4. Briefly vortex the tube and then do a quick spin (less than 5000xg) to concentrate the liquid at the bottom.5. Store the suspended plasmid at -20°C. The DNA is stable for at least one year from date of shipping when stored at -20°C.
Note:	Plasmids are not sterile. For experiments where strict sterility is required, filtration with 0.22um filter is required.
RefSeq:	NM_001031709.1 , NP_001026879.1
RefSeq Size:	2420 bp
RefSeq ORF:	1029 bp
Locus ID:	55328
UniProt ID:	Q5VYX0
Cytogenetics:	10q23.31
Protein Families:	Secreted Protein
MW:	37.8 kDa
Gene Summary:	Renalase is a flavin adenine dinucleotide-dependent amine oxidase that is secreted into the blood from the kidney (Xu et al., 2005 [PubMed 15841207]).[supplied by OMIM, Mar 2008]

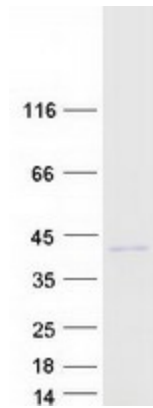
Product images:



Circular map for RC202791



Western blot validation of overexpression lysate (Cat# [LY422160]) using anti-DDK antibody (Cat# [TA50011-100]). Left: Cell lysates from untransfected HEK293T cells; Right: Cell lysates from HEK293T cells transfected with RC202791 using transfection reagent MegaTran 2.0 (Cat# [TT210002]).



Coomassie blue staining of purified RNLS protein (Cat# [TP302791]). The protein was produced from HEK293T cells transfected with RNLS cDNA clone (Cat# RC202791) using MegaTran 2.0 (Cat# [TT210002]).