

Product datasheet for **RC202787**

ARHI (DIRAS3) (NM_004675) Human Tagged ORF Clone

Product data:

Product Type:	Expression Plasmids
Product Name:	ARHI (DIRAS3) (NM_004675) Human Tagged ORF Clone
Tag:	Myc-DDK
Symbol:	ARHI
Synonyms:	ARHI; NOEY2
Mammalian Cell Selection:	Neomycin
Vector:	pCMV6-Entry (PS100001)
E. coli Selection:	Kanamycin (25 ug/mL)
ORF Nucleotide Sequence:	>RC202787 ORF sequence Red=Cloning site Blue=ORF Green=Tags(s)

TTTTGTAATACGACTCACTATAGGGCGGCCGGAATTCGTCGACTGGATCCGGTACCGAGGAGATCTGCC
GCC**CGATCGCC**

ATGGGTAACGCCAGCTTTGGCTCCAAGGAACAGAAGCTGCTGAAGCGGTTGCGGCTTCTGCCCGCCCTGC
TTATCCTCCGCGCCTTCAAGCCCCACAGGAAGATCAGAGATTACCGCGTCGTGGTAGTCGGCACCCTGG
TGTGGGAAAAGTACGCTGCTGCACAAGTGGGCGAGCGGCAACTCCGTCATGAGTACCTGCCGACCATT
GAAAATACCTACTGCCAGTTGCTGGGCTGCAGCCACGGTGTGCTTCCCTGCACATCACCGACAGCAAGA
GTGGCGACGGCAACCGCCTCTGCAGCGCCACGTTATAGCCCGGGCCACGCCTTCGTCTGGTCTACTC
AGTCACCAAGAAGGAAACCTGGAAGAGCTGAAGGCCTTCTATGAGCTGATCTGCAAGATCAAAGGTAAC
AACCTGCATAAGTTCCCCATCGTCTGGTGGGCAATAAAAGTGATGACACCCACCGGAGGTGGCCCTGA
ATGATGGTGCCACCTGTGCGATGGAGTGAATTGCGCCTTCATGGAGATTCAGCCAAGACCGATGTGAA
TGTGCAGGAGCTGTTCCACATGCTGCTGAATTACAAGAAAAGCCACCACCGGCCTCCAGGAGCCCGAG
AAGAAATCCAGATGCCAACACCACTGAGAAGCTGCTTGACAAGTGCATAATCATG

ACGCGTACGCGGCGCTCGAGCAGAACTCATCTCAGAAGAGGATCTGGCAGCAATGATATCCTGGATT
ACAAGGATGACGACGATAAGGTTTAA



[View online »](#)

Protein Sequence: >RC202787 protein sequence
Red=Cloning site Green=Tags(s)

MGNASFGSKEQKLLKRLRLLPALLILRAFKPHRKIRDYRVVVVGTAGVGKSTLLHKWASGNFRHEYLP
 ENTICYQLLGC SHGVL SLHITDSKSGDGNRALQRHVIARGHAFVLVYSVTKKETLEELKAFYELICKIKGN
 NLHKFP IIVLVGNKSDDT HREVALNDGATCAMEWNCAFMEISAKTDVNVQELFHMLLNYYKKKPTTGLQEPE
 KKSQMPNTTEKLLDKCIIM

TRTRPLEQKLISEEDLAANDILDYKDDDDKV

Chromatograms: https://cdn.origene.com/chromatograms/mk6145_g11.zip

Restriction Sites: SgfI-MluI

Cloning Scheme:



ACCN: NM_004675

ORF Size: 687 bp

OTI Disclaimer: The molecular sequence of this clone aligns with the gene accession number as a point of reference only. However, individual transcript sequences of the same gene can differ through naturally occurring variations (e.g. polymorphisms), each with its own valid existence. This clone is substantially in agreement with the reference, but a complete review of all prevailing variants is recommended prior to use. [More info](#)

OTI Annotation: This clone was engineered to express the complete ORF with an expression tag. Expression varies depending on the nature of the gene.

Components: The ORF clone is ion-exchange column purified and shipped in a 2D barcoded Matrix tube containing 10ug of transfection-ready, dried plasmid DNA (reconstitute with 100 ul of water).

Reconstitution Method:

1. Centrifuge at 5,000xg for 5min.
2. Carefully open the tube and add 100ul of sterile water to dissolve the DNA.
3. Close the tube and incubate for 10 minutes at room temperature.
4. Briefly vortex the tube and then do a quick spin (less than 5000xg) to concentrate the liquid at the bottom.
5. Store the suspended plasmid at -20°C. The DNA is stable for at least one year from date of shipping when stored at -20°C.

RefSeq: [NM_004675.4](#)

RefSeq Size: 1642 bp

RefSeq ORF: 690 bp

Locus ID: 9077

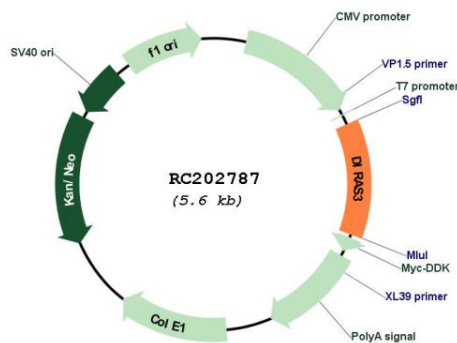
UniProt ID: [O95661](#)

Cytogenetics: 1p31.3

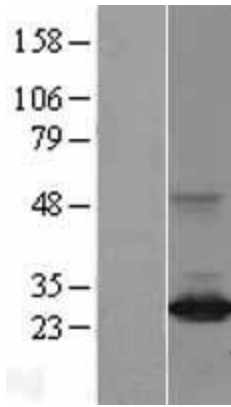
MW: 25.9 kDa

Gene Summary: This gene encodes a member of the ras superfamily. This gene is imprinted gene with monoallelic expression of the paternal allele which is associated with growth suppression. The encoded protein acts as a tumor suppressor whose function is abrogated in many ovarian and breast cancers. This protein may also play a role autophagy in certain cancer cells by regulating the autophagosome initiation complex. [provided by RefSeq, Nov 2015]

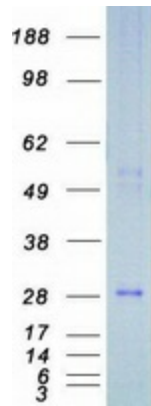
Product images:



Circular map for RC202787



Western blot validation of overexpression lysate (Cat# [LY401484]) using anti-DDK antibody (Cat# [TA50011-100]). Left: Cell lysates from untransfected HEK293T cells; Right: Cell lysates from HEK293T cells transfected with RC202787 using transfection reagent MegaTran 2.0 (Cat# [TT210002]).



Coomassie blue staining of purified DIRAS3 protein (Cat# [TP302787]). The protein was produced from HEK293T cells transfected with DIRAS3 cDNA clone (Cat# RC202787) using MegaTran 2.0 (Cat# [TT210002]).