

Product datasheet for RC202786L4

PSMA4 (NM_002789) Human Tagged Lenti ORF Clone

Product data:

Product Type:	Expression Plasmids
Product Name:	PSMA4 (NM_002789) Human Tagged Lenti ORF Clone
Tag:	mGFP
Symbol:	PSMA4
Synonyms:	HC9; HsT17706; PSC9
Mammalian Cell Selection:	Puromycin
Vector:	pLenti-C-mGFP-P2A-Puro (PS100093)
E. coli Selection:	Chloramphenicol (34 ug/mL)
ORF Nucleotide Sequence:	The ORF insert of this clone is exactly the same as(RC202786).
Restriction Sites:	SgfI-MluI
Cloning Scheme:	

Cloning sites used for ORF Shuttling:



* The last codon before the Stop codon of the ORF.

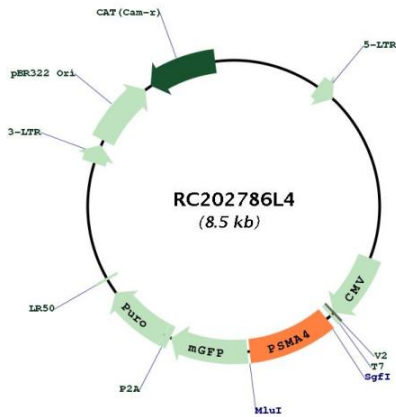
ACCN:	NM_002789
ORF Size:	783 bp



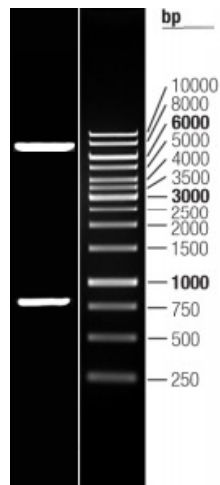
[View online »](#)

OTI Disclaimer:	The molecular sequence of this clone aligns with the gene accession number as a point of reference only. However, individual transcript sequences of the same gene can differ through naturally occurring variations (e.g. polymorphisms), each with its own valid existence. This clone is substantially in agreement with the reference, but a complete review of all prevailing variants is recommended prior to use. More info
OTI Annotation:	This clone was engineered to express the complete ORF with an expression tag. Expression varies depending on the nature of the gene.
Components:	The ORF clone is ion-exchange column purified and shipped in a 2D barcoded Matrix tube containing 10ug of transfection-ready, dried plasmid DNA (reconstitute with 100 ul of water).
Reconstitution Method:	<ol style="list-style-type: none">1. Centrifuge at 5,000xg for 5min.2. Carefully open the tube and add 100ul of sterile water to dissolve the DNA.3. Close the tube and incubate for 10 minutes at room temperature.4. Briefly vortex the tube and then do a quick spin (less than 5000xg) to concentrate the liquid at the bottom.5. Store the suspended plasmid at -20°C. The DNA is stable for at least one year from date of shipping when stored at -20°C.
RefSeq:	NM_002789.3
RefSeq Size:	1235 bp
RefSeq ORF:	786 bp
Locus ID:	5685
UniProt ID:	P25789
Cytogenetics:	15q25.1
Domains:	proteasome
Protein Families:	Druggable Genome, Protease
Protein Pathways:	Proteasome
MW:	29.5 kDa
Gene Summary:	This gene encodes a core alpha subunit of the 20S proteasome, which is a highly ordered ring-shaped structure composed of four rings of 28 non-identical subunits. Proteasomes cleave peptides in an ATP- and ubiquitin-dependent manner. [provided by RefSeq, Aug 2016]

Product images:



Circular map for RC202786L4



Double digestion of RC202786L4 using SgfI and MluI