

Product datasheet for RC202782

GMF beta (GMFB) (NM_004124) Human Tagged ORF Clone

Product data:

Product Type: Expression Plasmids
Product Name: GMF beta (GMFB) (NM_004124) Human Tagged ORF Clone
Tag: Myc-DDK
Symbol: GMF beta
Synonyms: GMF
Mammalian Cell Selection: Neomycin
Vector: pCMV6-Entry (PS100001)
E. coli Selection: Kanamycin (25 ug/mL)
ORF Nucleotide Sequence: >RC202782 ORF sequence
Red=Cloning site Blue=ORF Green=Tags(s)

TTTTGTAATACGACTCACTATAGGGCGGCCGGAATTCGTCGACTGGATCCGGTACCGAGGAGATCTGCC
GCC**CGATCGCC**

ATGAGTGAGTCTTTGGTTGTTTGTGATGTTGCCGAAGATTTAGTGGAAAAGCTGAGAAAGTTTCGTTTTTC
GCAAAGAAACGAACAACGCTGCTATTATAATGAAGATTGACAAGGATAAACGCCTGGTGGTACTGGATGA
GGAGCTTGAGGGCATTTCACCAGATGAACCTAAAGATGAACCTACCTGAACGACAACCTCGCTTCATTGTG
TATAGTTATAAATCAACATGATGATGGAAGAGTTTCATATCCTCTGTGCTTTATTTCTCCAGTCCTG
TTGGATGTAAGCCTGAACAACAGATGATGTATGCTGGAAGTAAGAATAAGCTAGTCCAGACAGCTGAAC
AACCAAGGTATTTGAAATAAGAAATACCGAAGACCTAACTGAAGAATGGTTACGTGAGAAACTTGGATTT
TCACTAATGTGAACCTCTGTGTTTCTAAAGTATTTATGTAT

ACGCGTACGCGGCCGCTCGAGCAGAACTCATCTCAGAAGAGGATCTGGCAGCAAATGATATCCTGGATT
ACAAGGATGACGACGATAAGGTTTAA

Protein Sequence: >RC202782 protein sequence
Red=Cloning site Green=Tags(s)

MESLVVCDVAEDLVEKLRKFRFRKETNNAIIIMKIDKDKRLVVLDEELEGISPDELKDELPERQPRFIV
YSYKYQHDDGRVSYPLCFIFSSPVGCKPEQMMYAGSKNKLVTQAE LTKVFEIRNTEDL TEEWLREKLG
FTNVNFCVSKVFMV

TRTRPLEQKLI SEEDLAANDILDYKDDDDKV

Chromatograms: https://cdn.origene.com/chromatograms/mk6415_h09.zip



[View online >](#)

Restriction Sites: SgfI-MluI

Cloning Scheme:



ACCN: NM_004124

ORF Size: 462 bp

OTI Disclaimer: The molecular sequence of this clone aligns with the gene accession number as a point of reference only. However, individual transcript sequences of the same gene can differ through naturally occurring variations (e.g. polymorphisms), each with its own valid existence. This clone is substantially in agreement with the reference, but a complete review of all prevailing variants is recommended prior to use. [More info](#)

OTI Annotation: This clone was engineered to express the complete ORF with an expression tag. Expression varies depending on the nature of the gene.

Components: The ORF clone is ion-exchange column purified and shipped in a 2D barcoded Matrix tube containing 10ug of transfection-ready, dried plasmid DNA (reconstitute with 100 ul of water).

Reconstitution Method:

1. Centrifuge at 5,000xg for 5min.
2. Carefully open the tube and add 100ul of sterile water to dissolve the DNA.
3. Close the tube and incubate for 10 minutes at room temperature.
4. Briefly vortex the tube and then do a quick spin (less than 5000xg) to concentrate the liquid at the bottom.
5. Store the suspended plasmid at -20°C. The DNA is stable for at least one year from date of shipping when stored at -20°C.

Note: Plasmids are not sterile. For experiments where strict sterility is required, filtration with 0.22um filter is required.

RefSeq Size: 4125 bp

RefSeq ORF: 429 bp

Locus ID: 2764

UniProt ID: [P60983](#)

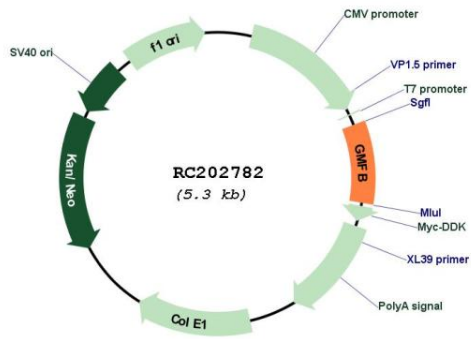
Cytogenetics: 14q22.2

Domains: ADF

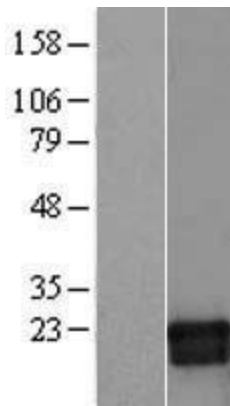
MW: 18.1 kDa

Gene Summary: This protein causes differentiation of brain cells, stimulation of neural regeneration, and inhibition of proliferation of tumor cells.[UniProtKB/Swiss-Prot Function]

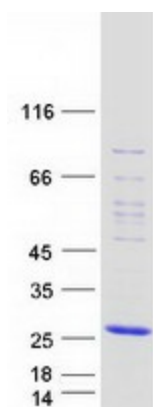
Product images:



Circular map for RC202782



Western blot validation of overexpression lysate (Cat# [LY418199]) using anti-DDK antibody (Cat# [TA50011-100]). Left: Cell lysates from untransfected HEK293T cells; Right: Cell lysates from HEK293T cells transfected with RC202782 using transfection reagent MegaTran 2.0 (Cat# [TT210002]).



Coomassie blue staining of purified GMFB protein (Cat# [TP302782]). The protein was produced from HEK293T cells transfected with GMFB cDNA clone (Cat# RC202782) using MegaTran 2.0 (Cat# [TT210002]).