

## Product datasheet for **RC202778**

### FGL1 (NM\_201553) Human Tagged ORF Clone

#### Product data:

Product Type:	Expression Plasmids
Product Name:	FGL1 (NM_201553) Human Tagged ORF Clone
Tag:	Myc-DDK
Symbol:	FGL1
Synonyms:	HFREP1; HP-041; HPS; LFIRE-1; LFIRE1
Mammalian Cell Selection:	Neomycin
Vector:	pCMV6-Entry (PS100001)
E. coli Selection:	Kanamycin (25 ug/mL)
ORF Nucleotide Sequence:	>RC202778 ORF sequence Red=Cloning site Blue=ORF Green=Tags(s)

TTTTGTAATACGACTCACTATAGGGCGGCCGGAATTCGTCGACTGGATCCGGTACCGAGGAGATCTGCC  
GCC**CGGATCGCC**

ATGGCAAAGGTGTTTCAGTTTCATCCTTGTACCACCGCTCTTACAATGGGCAGGGAAATTCGGCGCTCG  
AGGACTGTGCCAGGAGCAGATGCGGCTCAGAGCCAGGTGCGCCTGCTTGAGACCCGGTCAAACAGCA  
ACAGGTCAAGATCAAGCAGCTTTTGCAGGAGAATGAAGTCCAGTTCCTTGATAAAGGAGATGAGAATACT  
GTCATTGATCTTGAAGCAAGAGGCAGTATGCAGATTGTTTCAGAGATTTTCAATGATGGGTATAAGCTCA  
GTGGATTTTACAAAATCAAACCTCTCCAGAGCCCAGCAGAATTTTCTGTTTATTGTGACATGTCCGATGG  
AGGAGGATGGACTGTAATTCAGAGACGATCTGATGGCAGTGAAAACCTTTAACAGAGGATGGAAAGACTAT  
GAAAATGGCTTTGGAAATTTTGTCCAAAACATGGTGAATATTGGCTGGGCAATAAAAATCTTCACTTCT  
TGACCACTCAAGAAGACTACACTTTAAAATCGACCTTGACAGATTTTGAATAAATAGCCGTTATGCACA  
ATATAAGAATTTCAAAGTTGGAGATGAAAAGAATTTCTACGAGTTGAATATTGGGGAATATTCTGGAACA  
GCTGGAGATTCCTTTCGGGGAATTTTCATCCTGAGGTGCAGTGGTGGGCTAGTCACCAAAGAATGAAAT  
TCAGCACGTGGGACAGAGATCATGACAACTATGAAGGGAAGTGCAGAGAAGAAGATCAGTCTGGCTGGTG  
GTTTAAACAGGTGTCACCTGCAAACCTGAATGGTGTATACTACAGCGGCCCTACACGGCTAAAACAGAC  
AATGGGATTGTCTGGTACACCTGGCATGGTGGTGGTATTCTCTGAAATCTGTGGTTATGAAAATTAGGC  
CAAATGATTTTATTCAAATGTAATT

**ACGCGT**ACGCGGCCGCTCGAGCAGAAACTCATCTCAGAAGAGGATCTGGCAGCAATGATATCCTGGATT  
ACAAGGATGACGACGATAAGGTTTAA



[View online »](#)

**Protein Sequence:** >RC202778 protein sequence  
Red=Cloning site Green=Tags(s)

MAKVFSFILVTTALTMGREISALEDCAQEQMRLRAQVRLLETRVKQQQVKIKQLLQENEVQFLDKGDENT  
 VIDLGSKRQYADCSEIFNDGYKLSGFYKIKPLQSPAEFVSYCDMSDGGGWTVIQRRSDGSENFNRGWKDY  
 ENGFGNFVQKHGEYWLGNKNLHFLTQEDYTLKIDLADFEKNSRYAQYKNFKVGDENKFYELNIGEYSGT  
 AGDSLAGNFHPEVQWWASHQRMKFSTWDRDHDNYEGNCAEEDQSGWWFNRCHSANLNGVYVYSGPYTAKTD  
 NGIVWYTWHGWWYSLKSVVMKIRPNDIFPNVI

TRTRPLEQKLISEEDLAANDILDYKDDDDKV

**Chromatograms:** [https://cdn.origene.com/chromatograms/mk6415\\_c07.zip](https://cdn.origene.com/chromatograms/mk6415_c07.zip)

**Restriction Sites:** SgfI-MluI

**Cloning Scheme:**



**ACCN:** NM\_201553

**ORF Size:** 936 bp

**OTI Disclaimer:** The molecular sequence of this clone aligns with the gene accession number as a point of reference only. However, individual transcript sequences of the same gene can differ through naturally occurring variations (e.g. polymorphisms), each with its own valid existence. This clone is substantially in agreement with the reference, but a complete review of all prevailing variants is recommended prior to use. [More info](#)

**OTI Annotation:** This clone was engineered to express the complete ORF with an expression tag. Expression varies depending on the nature of the gene.

**Components:** The ORF clone is ion-exchange column purified and shipped in a 2D barcoded Matrix tube containing 10ug of transfection-ready, dried plasmid DNA (reconstitute with 100 ul of water).

**Reconstitution Method:**

1. Centrifuge at 5,000xg for 5min.
2. Carefully open the tube and add 100ul of sterile water to dissolve the DNA.
3. Close the tube and incubate for 10 minutes at room temperature.
4. Briefly vortex the tube and then do a quick spin (less than 5000xg) to concentrate the liquid at the bottom.
5. Store the suspended plasmid at -20°C. The DNA is stable for at least one year from date of shipping when stored at -20°C.

**RefSeq:** [NM\\_201553.1](#), [NP\\_963847.1](#)

**RefSeq Size:** 1500 bp

**RefSeq ORF:** 939 bp

**Locus ID:** 2267

**UniProt ID:** [Q08830](#)

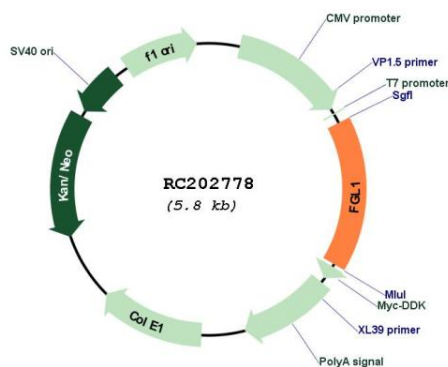
**Cytogenetics:** 8p22

**Protein Families:** Druggable Genome, Secreted Protein

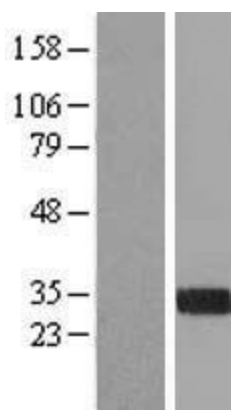
**MW:** 36.4 kDa

**Gene Summary:** Fibrinogen-like 1 is a member of the fibrinogen family. This protein is homologous to the carboxy terminus of the fibrinogen beta- and gamma- subunits which contains the four conserved cysteines of fibrinogens and fibrinogen related proteins. However, this protein lacks the platelet-binding site, cross-linking region and a thrombin-sensitive site which are necessary for fibrin clot formation. This protein may play a role in the development of hepatocellular carcinomas. Four alternatively spliced transcript variants encoding the same protein exist for this gene. [provided by RefSeq, Jul 2008]

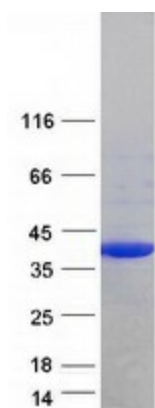
## Product images:



Circular map for RC202778



Western blot validation of overexpression lysate (Cat# [LY404456]) using anti-DDK antibody (Cat# [TA50011-100]). Left: Cell lysates from untransfected HEK293T cells; Right: Cell lysates from HEK293T cells transfected with [RC224532] using transfection reagent MegaTran 2.0 (Cat# [TT210002]).



Coomassie blue staining of purified FGL1 protein (Cat# [TP302778]). The protein was produced from HEK293T cells transfected with FGL1 cDNA clone (Cat# RC202778) using MegaTran 2.0 (Cat# [TT210002]).