

Product datasheet for **RC202775**

SULT1C2 (NM_001056) Human Tagged ORF Clone

Product data:

Product Type:	Expression Plasmids
Product Name:	SULT1C2 (NM_001056) Human Tagged ORF Clone
Tag:	Myc-DDK
Symbol:	SULT1C2
Synonyms:	humSULTC2; ST1C1; ST1C2; SULT1C1
Mammalian Cell Selection:	Neomycin
Vector:	pCMV6-Entry (PS100001)
E. coli Selection:	Kanamycin (25 ug/mL)
ORF Nucleotide Sequence:	>RC202775 ORF sequence Red=Cloning site Blue=ORF Green=Tags(s)

TTTTGTAATACGACTCACTATAGGGCGCCGGGAATTCGTCGACTGGATCCGGTACCGAGGAGATCTGCC
GCC**CGGATCGCC**

ATGGCCCTGACCTCAGACCTGGGGAAACAGATAAACTGAAAGAGGTGGAGGGGACCTCCTGCAGCCTG
CAACTGTGGACAACCTGGAGCCAGATCCAGAGCTTCGAGGCCAAACCAGATGATCTCCTCATCTGCACCTA
CCCTAAAGCAGGGACAACGTGGATTTCAGGAAATGTGGATATGATTGAACAGAATGGGGACGTGGAGAAG
TGCCAGCGAGCCATCATCAACACCGCCATCCTTTCATTGAGTGGGCTCGGCCACCCCAACCTTCTGGTG
TGGAAAAAGCCAAAGCAATGCCCTCTCCACGGATACTAAAGACTCACCTTCCACTCAGTGTGCCACC
GTCTTTCTGGGAAAACAACCTGCAAGTTCCTTTATGTAGCTCGAAATGCCAAAGACTGTATGGTTTCTAC
TACCATTTCCAAAGGATGAACCATGCTTCTGACCCTGGTACCTGGGAAGAGTATTTGAAACCTTCA
TCAATGGAAAAGTGGTTTGGGGTTCTGGTTTGACCACGTGAAAGGATGGTGGGAGATGAAAGACAGACA
CCAGATTTCTTCTTCTATGAGGACATAAAGAGGGACCCAAAGCATGAAATTCGGAAGGTGATGCAG
TTCATGGGAAAGAAGGTGGATGAAACAGTGTAGATAAAATTGTCCAGGAGACGTCAATTTGAGAAAATGA
AAGAAAATCCCATGACAAATCGTTCTACAGTTTCCAAATCTATCTGGACCAGTCAATTTCTCCTTCAT
GAGAAAAGGAAGTGTGGGGATTGGAAAAACCATTCACTGTTGCCGAGAATGAGAGGTTTGATGAAATC
TATAGAAGAAAGATGGAAGGAACCTCCATAAACTTCTGCATGGAATC

ACGCGTACGCGGCCGCTCGAGCAGAAAACCTCATCTCAGAAGAGGATCTGGCAGCAAATGATATCCTGGATT
ACAAGGATGACGACGATAAGGTTTAA



[View online »](#)

Protein Sequence: >RC202775 protein sequence
Red=Cloning site Green=Tags(s)

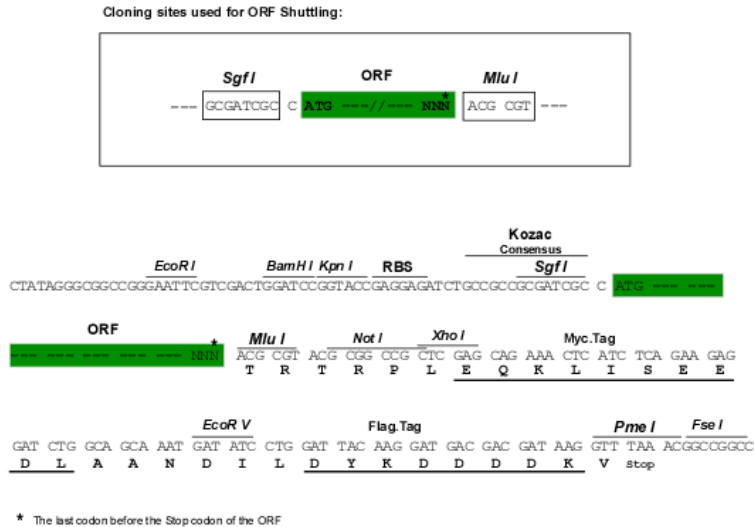
MALTSDLGKQIKLKEVEGTLQPATVDNWSQIQSFEAKPDDLICTYPKAGTTWIQEIVDMIEQNGDVEK
 CQRAIQHRHPFIEWARPPQPSGVEKAKAMPSPRILKTHLSTQLLPPSFWENNCKFLYVARNAKDCMVS
 YHFQRMNHMLPDPGTWEEYFETFINGKVVWGSWFDHVKGWEMKDRHQILFLFYEDIKRPDKHEIRKVMQ
 FMGKKVDETVLDKIVQETSF EKMKENPMTNRSTVSKSILDQSISSFMRKGTVDGWNHFTVAQNERFDEI
 YRRKMEGTSINFCMEL

TRTRPLEQKLISEEDLAANDILDYKDDDDKV

Chromatograms: https://cdn.origene.com/chromatograms/mk6414_e12.zip

Restriction Sites: SgfI-MluI

Cloning Scheme:



ACCN: NM_001056

ORF Size: 888 bp

OTI Disclaimer: The molecular sequence of this clone aligns with the gene accession number as a point of reference only. However, individual transcript sequences of the same gene can differ through naturally occurring variations (e.g. polymorphisms), each with its own valid existence. This clone is substantially in agreement with the reference, but a complete review of all prevailing variants is recommended prior to use. [More info](#)

OTI Annotation: This clone was engineered to express the complete ORF with an expression tag. Expression varies depending on the nature of the gene.

Components: The ORF clone is ion-exchange column purified and shipped in a 2D barcoded Matrix tube containing 10ug of transfection-ready, dried plasmid DNA (reconstitute with 100 ul of water).

Reconstitution Method:

1. Centrifuge at 5,000xg for 5min.
2. Carefully open the tube and add 100ul of sterile water to dissolve the DNA.
3. Close the tube and incubate for 10 minutes at room temperature.
4. Briefly vortex the tube and then do a quick spin (less than 5000xg) to concentrate the liquid at the bottom.
5. Store the suspended plasmid at -20°C. The DNA is stable for at least one year from date of shipping when stored at -20°C.

RefSeq: [NM_001056.4](#)

RefSeq Size: 2799 bp

RefSeq ORF: 891 bp

Locus ID: 6819

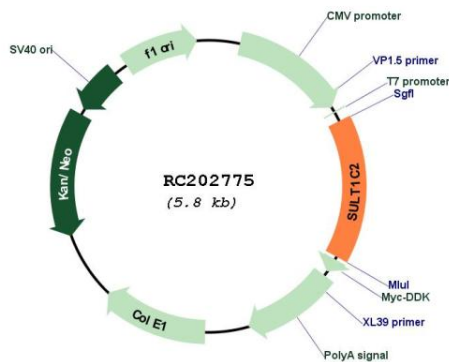
UniProt ID: [O00338](#)

Cytogenetics: 2q12.3

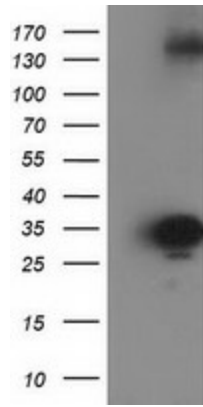
MW: 34.9 kDa

Gene Summary: Sulfotransferase enzymes catalyze the sulfate conjugation of many hormones, neurotransmitters, drugs, and xenobiotic compounds. These cytosolic enzymes are different in their tissue distributions and substrate specificities. The gene structure (number and length of exons) is similar among family members. This gene encodes a protein that belongs to the SULT1 subfamily, responsible for transferring a sulfo moiety from PAPS to phenol-containing compounds. Two alternatively spliced transcript variants encoding different isoforms have been described for this gene. [provided by RefSeq, Jul 2008]

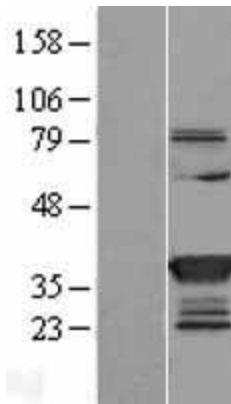
Product images:



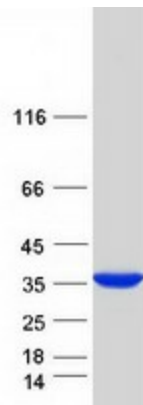
Circular map for RC202775



HEK293T cells were transfected with the pCMV6-ENTRY control (Cat# [PS100001], Left lane) or pCMV6-ENTRY SULT1C2 (Cat# RC202775, Right lane) cDNA for 48 hrs and lysed. Equivalent amounts of cell lysates (5 ug per lane) were separated by SDS-PAGE and immunoblotted with anti-SULT1C2(Cat# [TA502554]). Positive lysates [LY420736] (100ug) and [LC420736] (20ug) can be purchased separately from OriGene.



Western blot validation of overexpression lysate (Cat# [LY420736]) using anti-DDK antibody (Cat# [TA50011-100]). Left: Cell lysates from untransfected HEK293T cells; Right: Cell lysates from HEK293T cells transfected with RC202775 using transfection reagent MegaTran 2.0 (Cat# [TT210002]).



Coomassie blue staining of purified SULT1C2 protein (Cat# [TP302775]). The protein was produced from HEK293T cells transfected with SULT1C2 cDNA clone (Cat# RC202775) using MegaTran 2.0 (Cat# [TT210002]).