

Product datasheet for RC202769

LXN (NM_020169) Human Tagged ORF Clone

Product data:

| | |
|--------------------------|---|
| Product Type: | Expression Plasmids |
| Product Name: | LXN (NM_020169) Human Tagged ORF Clone |
| Tag: | Myc-DDK |
| Symbol: | LXN |
| Synonyms: | ECI; TCI |
| Vector: | pCMV6-Entry (PS100001) |
| E. coli Selection: | Kanamycin (25 ug/mL) |
| Cell Selection: | Neomycin |
| ORF Nucleotide Sequence: | >RC202769 ORF sequence Red=Cloning site Blue=ORF Green=Tags(s) |

TTTTGTAATACGACTCACTATAGGGCGCCGGAATTCGTCGACTGGATCCGGTACCGAGGAGATCTGCC
GCCGCGATCGCC

ATGGAATCCCGCCGACCAACTACCCAGCCTCCAGGGCGGCCTTGGTGGCACAGAACTACATCAACTACC
AGCAGGGGACCCCGCACAGGGTGTGTTGAGGTGCAGAAGGTCAAACAAGCCAGCATGGAGGATATCCAGG
AAGAGGACATAAGTATCGCCTTAAATTTGCTGTTGAAGAAATTACAAAAACAAGTTAAGGTGAAGTGC
ACAGCTGAAGTACTTTACCTTCAACGGGACAAGAACTGCACCAGAAGTCAACTTCACATTTGAAGGAG
AAACTGGAAGAATCCAGATGAAGAAGACAACACATTTTATCAAAGACTTAAGTCCATGAAGGAACCGCT
AGAAGCACAAAATATTCCAGACAATTTGGAAATGTATCTCCAGAAATGACGCTCGTTCTACATTTAGCC
TGGGTTGCCTGTGGTTATATAATATGGCAAAATCTACTGAAGACACATGGTATAAAATGGTAAAAATTC
AAACTGTCAAGCAAGTGCAAAGAAATGATGACTTTATTGAATTAGACTACACCATTCTACTTCATAATAT
AGCATCTCAGGAGATTATCCCTGGCAAATGCAAGTTCTCTGGCATCCACAATACGGCACTAAAGTAAAA
CATAATAGCCGTCTGCCAAAGGAAGTACAACTGGAA

ACGCGTACGCGGCCGCTCGAGCAGAACTCATCTCAGAAGAGGATCTGGCAGCAAATGATATCCTGGATT
ACAAGGATGACGACGATAAGGTTTAA



[View online »](#)

Protein Sequence: >RC202769 protein sequence
 Red=Cloning site Green=Tags(s)

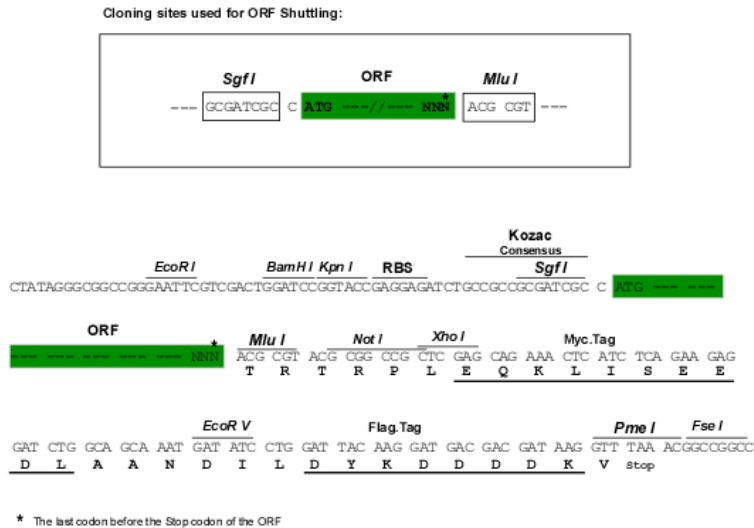
MEIPPTNYPASRAALVAQNYINYQQGTPHRVFEVQKVKQASMEDIPGRGHKYRLKFAVEEIIQKQVKVNC
 TAEVLYPSTGQETAPEVNF TFEGETGKNPDEEDNTFYQRLKSMKEPLEAQNIPDNFGNVSPMTLVHLA
 WVACGYIIWQNSTEDTWYKMKVIQTVKVQVRNDDFIELDYTILLHNIASQEIIIPWQMQLVWHPQYGTKVK
 HNSRLPKVEVQLE

TRTRPLEQKLISEEDLAANDILDYKDDDDKV

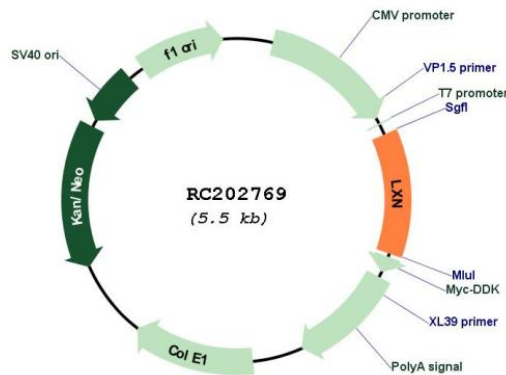
Chromatograms: https://cdn.origene.com/chromatograms/mk6414_e02.zip

Restriction Sites: SgfI-MluI

Cloning Scheme:



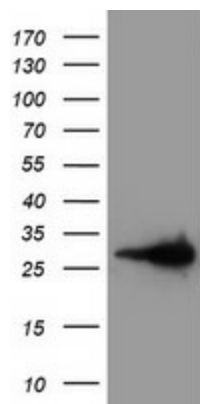
Plasmid Map:



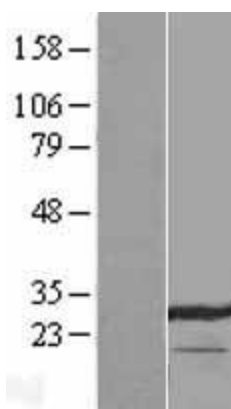
ACCN: NM_020169

ORF Size: 666 bp

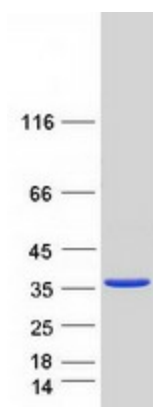
| | |
|-------------------------------|---|
| OTI Disclaimer: | The molecular sequence of this clone aligns with the gene accession number as a point of reference only. However, individual transcript sequences of the same gene can differ through naturally occurring variations (e.g. polymorphisms), each with its own valid existence. This clone is substantially in agreement with the reference, but a complete review of all prevailing variants is recommended prior to use. More info |
| OTI Annotation: | This clone was engineered to express the complete ORF with an expression tag. Expression varies depending on the nature of the gene. |
| Components: | The ORF clone is ion-exchange column purified and shipped in a 2D barcoded Matrix tube containing 10ug of transfection-ready, dried plasmid DNA (reconstitute with 100 ul of water). |
| Reconstitution Method: | <ol style="list-style-type: none">1. Centrifuge at 5,000xg for 5min.2. Carefully open the tube and add 100ul of sterile water to dissolve the DNA.3. Close the tube and incubate for 10 minutes at room temperature.4. Briefly vortex the tube and then do a quick spin (less than 5000xg) to concentrate the liquid at the bottom.5. Store the suspended plasmid at -20°C. The DNA is stable for at least one year from date of shipping when stored at -20°C. |
| RefSeq: | NM_020169.2 , NP_064554.2 |
| RefSeq Size: | 1132 bp |
| RefSeq ORF: | 669 bp |
| Locus ID: | 56925 |
| UniProt ID: | Q9BS40 |
| Cytogenetics: | 3q25.32 |
| MW: | 25.8 kDa |
| Gene Summary: | This gene encodes the only known protein inhibitor of zinc-dependent metalloproteinases. The encoded protein, latxin, downregulates the population size of hematopoietic stem cells. This protein is found to be downregulated in cancer cells because of promoter hypermethylation. [provided by RefSeq, Jul 2020] |

Product images:


HEK293T cells were transfected with the pCMV6-ENTRY control (Cat# [PS100001], Left lane) or pCMV6-ENTRY LXN (Cat# RC202769, Right lane) cDNA for 48 hrs and lysed. Equivalent amounts of cell lysates (5 ug per lane) were separated by SDS-PAGE and immunoblotted with anti-LXN (Cat# [TA503779]). Positive lysates [LY412596] (100ug) and [LC412596] (20ug) can be purchased separately from OriGene.



Western blot validation of overexpression lysate (Cat# [LY412596]) using anti-DDK antibody (Cat# [TA50011-100]). Left: Cell lysates from untransfected HEK293T cells; Right: Cell lysates from HEK293T cells transfected with RC202769 using transfection reagent MegaTran 2.0 (Cat# [TT210002]).



Coomassie blue staining of purified LXN protein (Cat# [TP302769]). The protein was produced from HEK293T cells transfected with LXN cDNA clone (Cat# RC202769) using MegaTran 2.0 (Cat# [TT210002]).