

Product datasheet for **RC202768**

DNAL1 (NM_031427) Human Tagged ORF Clone

Product data:

Product Type: Expression Plasmids
Product Name: DNAL1 (NM_031427) Human Tagged ORF Clone
Tag: Myc-DDK
Symbol: DNAL1
Synonyms: C14orf168; CILD16; LC1
Mammalian Cell Selection: Neomycin
Vector: pCMV6-Entry (PS100001)
E. coli Selection: Kanamycin (25 ug/mL)
ORF Nucleotide Sequence: >RC202768 ORF sequence
Red=Cloning site Blue=ORF Green=Tags(s)

TTTTGTAATACGACTCACTATAGGGCGGCCGGAATTCGTCGACTGGATCCGGTACCGAGGAGATCTGCC
GCC**CGATCGCC**

ATGGATGCATCCTTGCCATGCTTGCTAATTGCGAGAAGCTTTCCTGTCTACAACTGCATTGAAAAA
TTGCCAACCTGAATGGCTTAAAAAATTGAGGATATTATCTTTAGGAAGAAACAACATAAAGAACTTAA
TGGACTGGAGGCAGTAGGGGACACATTAGAAGAACTGTGGATCTCCTACAATTTTATTGAGAAGTTGAA
GGGATCCACATAATGAAGAAATTGAAGATTCTCTACATGTCTAATAACCTGGTAAAGACTGGGCTGAGT
TTGTGAAGCTGGCAGAACTGCCATGCCTCGAAGACCTGGTGTGTTGTAGGCAATCCCTTGAAGAGAAACA
TTCTGCTGAGAATAACTGGATTGAAGAAGCAACCAAGAGAGTGCCCAAAGTAAAAAGCTGGATGGTACT
CCAGTAATTAAGGGGATGAGGAAGAAGACAAC

ACGCGTACGCGGCCGCTCGAGCAGAACTCATCTCAGAAGAGGATCTGGCAGCAAATGATATCCTGGATT
ACAAGGATGACGACGATAAGGTTTAA

Protein Sequence: >RC202768 protein sequence
Red=Cloning site Green=Tags(s)

MDASLSMLANCEKLSLSTNCIEKIANLNGLKNLRLISLGRNNIKNLNGLEAVGDTLEELWISYNFIEKLG
GIHIMKKLKILYMSNNLVKDWAEFVKLAELPCLEDLVFVGNPLEEKHSAENNWIEEATKRVPLKLLDGT
PVIKGDDEEDN

TRTRPLEQKLISEEDLAANDILDYKDDDDKV

Chromatograms: https://cdn.origene.com/chromatograms/mk6721_g07.zip



[View online >](#)

Restriction Sites: SgfI-MluI

Cloning Scheme:



ACCN: NM_031427

ORF Size: 453 bp

OTI Disclaimer: The molecular sequence of this clone aligns with the gene accession number as a point of reference only. However, individual transcript sequences of the same gene can differ through naturally occurring variations (e.g. polymorphisms), each with its own valid existence. This clone is substantially in agreement with the reference, but a complete review of all prevailing variants is recommended prior to use. [More info](#)

OTI Annotation: This clone was engineered to express the complete ORF with an expression tag. Expression varies depending on the nature of the gene.

Components: The ORF clone is ion-exchange column purified and shipped in a 2D barcoded Matrix tube containing 10ug of transfection-ready, dried plasmid DNA (reconstitute with 100 ul of water).

- Reconstitution Method:
1. Centrifuge at 5,000xg for 5min.
 2. Carefully open the tube and add 100ul of sterile water to dissolve the DNA.
 3. Close the tube and incubate for 10 minutes at room temperature.
 4. Briefly vortex the tube and then do a quick spin (less than 5000xg) to concentrate the liquid at the bottom.
 5. Store the suspended plasmid at -20°C. The DNA is stable for at least one year from date of shipping when stored at -20°C.

RefSeq: [NM_031427.1](#), [NP_113615.1](#)

RefSeq Size: 8538 bp

RefSeq ORF: 573 bp

Locus ID: 83544

UniProt ID: [Q4LDG9](#)

Cytogenetics: 14q24.3

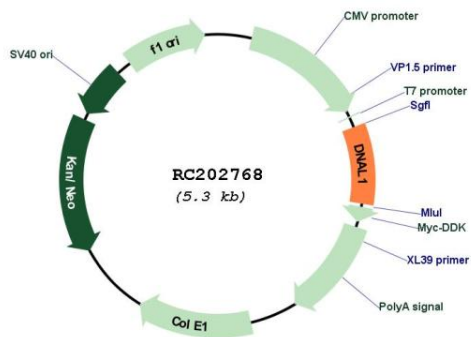
Domains: LRR, LRR_SD22

Protein Pathways: Huntington's disease

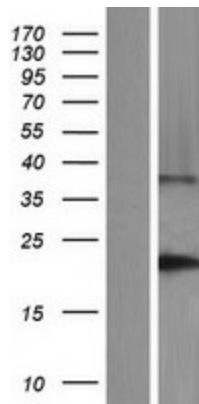
MW: 17.1 kDa

Gene Summary: This gene encodes an axonemal dynein light chain which functions as a component of the outer dynein arms complex. This complex acts as the molecular motor that provides the force to move cilia in an ATP-dependent manner. The encoded protein is expressed in tissues with motile cilia or flagella and may be involved in the movement of sperm flagella. Alternate splicing results in multiple transcript variants.[provided by RefSeq, Jan 2011]

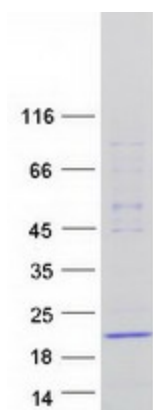
Product images:



Circular map for RC202768



Western blot validation of overexpression lysate (Cat# [LY410537]) using anti-DDK antibody (Cat# [TA50011-100]). Left: Cell lysates from untransfected HEK293T cells; Right: Cell lysates from HEK293T cells transfected with RC202768 using transfection reagent MegaTran 2.0 (Cat# [TT210002]).



Coomassie blue staining of purified DNAL1 protein (Cat# [TP302768]). The protein was produced from HEK293T cells transfected with DNAL1 cDNA clone (Cat# RC202768) using MegaTran 2.0 (Cat# [TT210002]).