

Product datasheet for RC202765

LIMS1 (NM_004987) Human Tagged ORF Clone

Product data:

Product Type:	Expression Plasmids
Product Name:	LIMS1 (NM_004987) Human Tagged ORF Clone
Tag:	Myc-DDK
Symbol:	LIMS1
Synonyms:	PINCH; PINCH-1; PINCH1
Mammalian Cell Selection:	Neomycin
Vector:	pCMV6-Entry (PS100001)
E. coli Selection:	Kanamycin (25 ug/mL)
ORF Nucleotide Sequence:	>RC202765 ORF sequence Red=Cloning site Blue=ORF Green=Tags(s)

TTTTGTAATACGACTCACTATAGGGCGGCCGGAATTCGTCGACTGGATCCGGTACCGAGGAGATCTGCCGCCGCGATCGCC

ATGGCCAACGCCCTGGCCAGCGCCACTTGCAGCGCTGCAAGGGCGGCTTTGCGCCCGCTGAGAAGATCGTGAACAGTAATGGGGAGCTGTACCATGAGCAGTGTTCGTGTGCGCTCAGTGCTCCAGCAGTCCAGAGAGGACTCTTCTATGAGTTTGAAGGAAGAAAGTACTGTGAACATGACTTTCAGATGCTCTTGCCCTTGC TGTCATCAGTGTGGTGAATTCACCATTGGCCGAGTTATCAAAGCCATGAATAACAGCTGGCATCCGGAGTGCTTCCGCTGTGACCTCTGCCAGGAAGTCTGGCAGATATCGGGTTTGTCAAGAATGCTGGGAGACCTGTGTGCGCCCTGTATAATCGTGAGAAAGCCAGAGGCCTTGGGAAATACATCTGCCAGAAATGCCATGCTATCATCGATGAGCAGCCTCTGATATTCAAGAACGACCCCTACCATCCAGACCATTCAACTGCGCCAACGCGGGAAGGAGCTGACTGCCGATGCACGGGAGCTGAAAGGGGAGCTATACTGCCTCCCATGCCATGATAAATGGGGTCCCATCTGTGGTCTTGGCGACGGCCATCGAAGGGCGCGTGGTGAACGCTATGGGCAAGCAGTGGCATGTGGAGCATTTTGTGGTGGCAAGTGTGAGAAACCTTTCTTGGACATCGCCATTATGAGAGAAAGCCTGGCATATTGTGAACTCACTATAACCAGCTATTTGGTGTGTTTGGCTTCCACTGCAATCGTGTTATAGAAGGTGGTGTGGTCTCTGCTTAAATAGGCCTGGTGGTGAACGCTGTTTGCCTGTTCTACCTGCAACACTAAATTAACACTCAAGAATAAGTTTGTGGAGTTTGACATGAAGCCAGTCTGTAAAGAAGTGCTATGAGAAAATTTCCATTGGAGCTGAAGAAAAGACTTAAGAACTAGCTGAGACCTTAGGAAGGAAA

ACGCGTACGCGGCCGCTCGAGCAGAACTCATCTCAGAAGAGGATCTGGCAGCAAATGATATCCTGGATTACAAGGATGACGACGATAAGGTTTAA



[View online »](#)

Protein Sequence: >RC202765 protein sequence
Red=Cloning site Green=Tags(s)

MANALASATCERCKGGFAPAEKIVNSNGELYHEQCFVCAQCFQFPEGLFYEFEGRKYCEHDFQMLFAPC
 CHQCGEFTIGRVIKAMNNSWHPECFRCDLCQEVLADIGFVKNAGRHLCRPCHNREKARGLGKYICQKCHA
 IDEQPLIFKNDPYHPDHFNCANCGKELTADARELKGELYCLPCHDKMGVPICGACRRPIEGRVNVAMGK
 QWHVEHFVCAKCEKPFLLGHRHYERKGLAYCETHYNQLFGDVCFHCRNRIEGGVVSALNKAWCVNCFACST
 CNTKLTLLKNKFVEFDMKPVCKKCYEKFPLELKKRLKLAETLGRK

TRTRPLEQKLISEEDLAANDILDYKDDDDKV

Chromatograms: https://cdn.origene.com/chromatograms/mk6578_d09.zip

Restriction Sites: SgfI-MluI

Cloning Scheme:



ACCN: NM_004987

ORF Size: 975 bp

OTI Disclaimer: The molecular sequence of this clone aligns with the gene accession number as a point of reference only. However, individual transcript sequences of the same gene can differ through naturally occurring variations (e.g. polymorphisms), each with its own valid existence. This clone is substantially in agreement with the reference, but a complete review of all prevailing variants is recommended prior to use. [More info](#)

OTI Annotation: This clone was engineered to express the complete ORF with an expression tag. Expression varies depending on the nature of the gene.

Components: The ORF clone is ion-exchange column purified and shipped in a 2D barcoded Matrix tube containing 10ug of transfection-ready, dried plasmid DNA (reconstitute with 100 ul of water).

Reconstitution Method:

1. Centrifuge at 5,000xg for 5min.
2. Carefully open the tube and add 100ul of sterile water to dissolve the DNA.
3. Close the tube and incubate for 10 minutes at room temperature.
4. Briefly vortex the tube and then do a quick spin (less than 5000xg) to concentrate the liquid at the bottom.
5. Store the suspended plasmid at -20°C. The DNA is stable for at least one year from date of shipping when stored at -20°C.

RefSeq: [NM_004987.6](#)

RefSeq Size: 4369 bp

RefSeq ORF: 978 bp

Locus ID: 3987

UniProt ID: [P48059](#)

Cytogenetics: 2q12.3

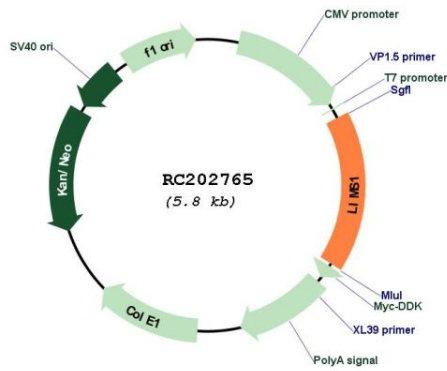
Domains: LIM

Protein Families: Druggable Genome

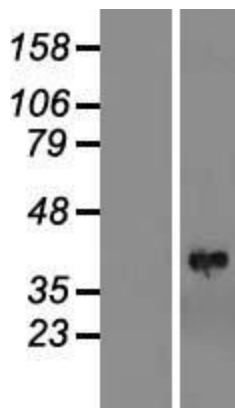
MW: 37.2 kDa

Gene Summary: The protein encoded by this gene is an adaptor protein which contains five LIM domains, or double zinc fingers. The protein is likely involved in integrin signaling through its LIM domain-mediated interaction with integrin-linked kinase, found in focal adhesion plaques. It is also thought to act as a bridge linking integrin-linked kinase to NCK adaptor protein 2, which is involved in growth factor receptor kinase signaling pathways. Its localization to the periphery of spreading cells also suggests that this protein may play a role in integrin-mediated cell adhesion or spreading. Several transcript variants encoding different isoforms have been found for this gene. [provided by RefSeq, Jul 2010]

Product images:



Circular map for RC202765



Western blot validation of overexpression lysate (Cat# [LY417616]) using anti-DDK antibody (Cat# [TA50011-100]). Left: Cell lysates from untransfected HEK293T cells; Right: Cell lysates from HEK293T cells transfected with RC202765 using transfection reagent MegaTran 2.0 (Cat# [TT210002]).