

Product datasheet for RC202763

Surb7 (MED21) (NM_004264) Human Tagged ORF Clone

Product data:

Product Type: Expression Plasmids
Product Name: Surb7 (MED21) (NM_004264) Human Tagged ORF Clone
Tag: Myc-DDK
Symbol: Surb7
Synonyms: hSrb7; SRB7; SURB7
Mammalian Cell Selection: Neomycin
Vector: pCMV6-Entry (PS100001)
E. coli Selection: Kanamycin (25 ug/mL)
ORF Nucleotide Sequence: >RC202763 ORF sequence
 Red=Cloning site Blue=ORF Green=Tags(s)

TTTTGTAATACGACTCACTATAGGGCGGCCGGAATTCGTCGACTGGATCCGGTACCGAGGAGATCTGCC
GCC**CGATCGCC**

ATGGCGGATCGGCTCACGCAGTTCAGGACGCTGTGAATTCGCTTGCAGATCAGTTTTGTAATGCCATTG
GAGTATTGCAGCAATGTGGTCTCTGCCTCTTTCAATAATTCAGACAGCAATTAACAAAGACCAGCC
AGCTAACCTACAGAAGAGTATGCCAGCTTTTGCAGCACTGATTGCACGAACAGCAAAAGACATTGAT
GTTTTGATAGATTCCTTACCCAGTGAAGAATCTACAGCTGCTTACAGGCTGCTAGCTTGATAAGCTAG
AAGAAGAAAACCATGAAGCTGCTACATGTCTGGAGGATGTTGTTATCGAGGAGACATGCTTCTGGAGAA
GATACAAAGCGCACTTGCTGATATTGCACAGTCACAGCTGAAGACAAGAAGTGGTACCCATAGCCAGTCT
CTCCAGACTCA

ACGCGTACGCGGCCGCTCGAGCAGAACTCATCTCAGAAGAGGATCTGGCAGCAAATGATATCCTGGATT
ACAAGGATGACGACGATAAGGTTTAA

Protein Sequence: >RC202763 protein sequence
 Red=Cloning site Green=Tags(s)

MADRLTQLQDAVNSLADQFCNAIGVLQCGPPASFNNIQTAINKDQPANPTEEYQLFAALIARTAKDID
VLIDSLPSEESTAALQAASLYKLEENHEAATCLEDEVVYRGDMLLEKIQSALADIAQSQLKTRSGTHSQS
LPDS

TRTRPLEQKLISEEDLAANDILDYKDDDDKV

Chromatograms: https://cdn.origene.com/chromatograms/mk6416_g10.zip



[View online »](#)

Restriction Sites: SgfI-MluI

Cloning Scheme:



ACCN: NM_004264

ORF Size: 432 bp

OTI Disclaimer: The molecular sequence of this clone aligns with the gene accession number as a point of reference only. However, individual transcript sequences of the same gene can differ through naturally occurring variations (e.g. polymorphisms), each with its own valid existence. This clone is substantially in agreement with the reference, but a complete review of all prevailing variants is recommended prior to use. [More info](#)

OTI Annotation: This clone was engineered to express the complete ORF with an expression tag. Expression varies depending on the nature of the gene.

Components: The ORF clone is ion-exchange column purified and shipped in a 2D barcoded Matrix tube containing 10ug of transfection-ready, dried plasmid DNA (reconstitute with 100 ul of water).

Reconstitution Method:

1. Centrifuge at 5,000xg for 5min.
2. Carefully open the tube and add 100ul of sterile water to dissolve the DNA.
3. Close the tube and incubate for 10 minutes at room temperature.
4. Briefly vortex the tube and then do a quick spin (less than 5000xg) to concentrate the liquid at the bottom.
5. Store the suspended plasmid at -20°C. The DNA is stable for at least one year from date of shipping when stored at -20°C.

RefSeq: [NM_004264.5](#)

RefSeq Size: 2705 bp

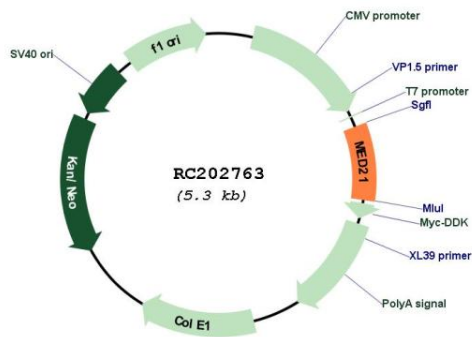
RefSeq ORF: 435 bp

Locus ID: 9412

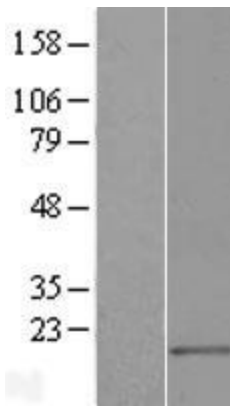
UniProt ID: [Q13503](#)
 Cytogenetics: 12p11.23
 Protein Families: Transcription Factors
 MW: 15.6 kDa

Gene Summary: This gene encodes a member of the mediator complex subunit 21 family. The encoded protein interacts with the human RNA polymerase II holoenzyme and is involved in transcriptional regulation of RNA polymerase II transcribed genes. A pseudogene of this gene is located on chromosome 8. Alternative splicing results in multiple transcript variants. [provided by RefSeq, Nov 2012]

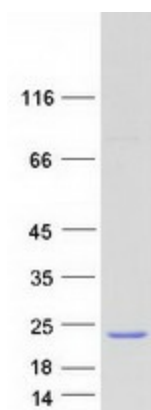
Product images:



Circular map for RC202763



Western blot validation of overexpression lysate (Cat# [LY418106]) using anti-DDK antibody (Cat# [TA50011-100]). Left: Cell lysates from untransfected HEK293T cells; Right: Cell lysates from HEK293T cells transfected with RC202763 using transfection reagent MegaTran 2.0 (Cat# [TT210002]).



Coomassie blue staining of purified MED21 protein (Cat# [TP302763]). The protein was produced from HEK293T cells transfected with MED21 cDNA clone (Cat# RC202763) using MegaTran 2.0 (Cat# [TT210002]).