

Product datasheet for RC202762

GLT28D1 (ALG13) (NM_018466) Human Tagged ORF Clone

Product data:

Product Type: Expression Plasmids
Product Name: GLT28D1 (ALG13) (NM_018466) Human Tagged ORF Clone
Tag: Myc-DDK
Symbol: GLT28D1
Synonyms: CDG1S; CXorf45; DEE36; EIEE36; GLT28D1; MDS031; TDRD13; YGL047W
Mammalian Cell Selection: Neomycin
Vector: pCMV6-Entry (PS100001)
E. coli Selection: Kanamycin (25 ug/mL)
ORF Nucleotide Sequence: >RC202762 ORF sequence
Red=Cloning site Blue=ORF Green=Tags(s)

TTTTGTAATACGACTCACTATAGGGCGCCGGGAATTCGTCGACTGGATCCGGTACCGAGGAGATCTGCC
GCC**CGATCGCC**

ATGAAGTGC GTTTGTTACCGTAGGGACCACCAGCTTTGACGACCTCATTGCGTGTGTGTCGGCGCCCG
ACAGTCTGCAAAAAATCGAGAGCCTTGGTTACAACCGACTTATCCTGCAAATGGTAGAGGAACGGTGGT
ACCTGAACCCCTCAGTACTGAGTCGTTTACTCTGGATGTTTACAGGTACAAGGATTCCTTAAAAGGAA
ATTCAGAAAAGCAGATCTGTTATTAGTCACGCAGGTGCAGGAAGCTGTTGGAGACTCTGAAAAAGGAA
AGCCACTCGTAGTGGTTATAAACGAAAAGTTGATGAACAATCATCAGCTGGAAGTGGCAAAGCAGCTACA
CAAAGAGGGTCATCTCTTCTATTGTACCTGCAGCACGCTTCTGGGCTGTTACAGTCAATGGACTTATCA
ACACTGAAATGTTATCCTCCTGGCCAGCCAGAAAATTTCTGCATTTTTGGATAAAGTTGTTGGATTAC
AAAAA

ACGCGTACGCGGCCGCTCGAGCAGAAACTCATCTCAGAAGAGGATCTGGCAGCAAATGATATCCTGGATT
ACAAGGATGACGACGATAAGGTTTAA

Protein Sequence: >RC202762 protein sequence
Red=Cloning site Green=Tags(s)

MKCVFVTVGTTSFDDLIACVSAPDSLQKIESLGYNRLILQIGRGTVVPEPFSTESFTLDVYRYKDSLKED
IQKADLVISHAGAGSCLLETLEK GKPLVVVINEKLMNNHQLELAKQLHKEGHLFYCTSTLPGLLQSM DLS
TLKCYPPGQPEKFS AFLDKVVGLQK

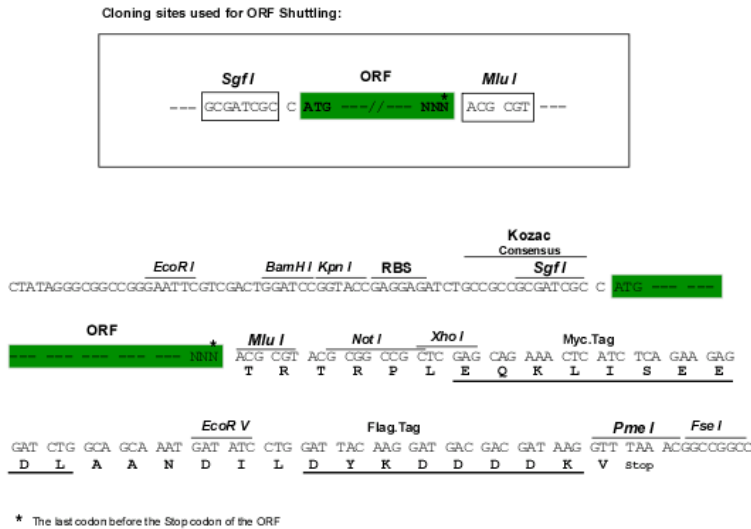
TRTRPLEQKLISEEDLAANDILDYKDDDDKV

Chromatograms: https://cdn.origene.com/chromatograms/mk6079_g08.zip



Restriction Sites: SgfI-MluI

Cloning Scheme:



ACCN: NM_018466

ORF Size: 495 bp

OTI Disclaimer: The molecular sequence of this clone aligns with the gene accession number as a point of reference only. However, individual transcript sequences of the same gene can differ through naturally occurring variations (e.g. polymorphisms), each with its own valid existence. This clone is substantially in agreement with the reference, but a complete review of all prevailing variants is recommended prior to use. [More info](#)

OTI Annotation: This clone was engineered to express the complete ORF with an expression tag. Expression varies depending on the nature of the gene.

Components: The ORF clone is ion-exchange column purified and shipped in a 2D barcoded Matrix tube containing 10ug of transfection-ready, dried plasmid DNA (reconstitute with 100 ul of water).

Reconstitution Method:

1. Centrifuge at 5,000xg for 5min.
2. Carefully open the tube and add 100ul of sterile water to dissolve the DNA.
3. Close the tube and incubate for 10 minutes at room temperature.
4. Briefly vortex the tube and then do a quick spin (less than 5000xg) to concentrate the liquid at the bottom.
5. Store the suspended plasmid at -20°C. The DNA is stable for at least one year from date of shipping when stored at -20°C.

RefSeq: [NM_018466.6](#)

RefSeq Size: 2993 bp

RefSeq ORF: 498 bp

Locus ID: 79868

UniProt ID: [Q9NP73](#)

Cytogenetics: Xq23

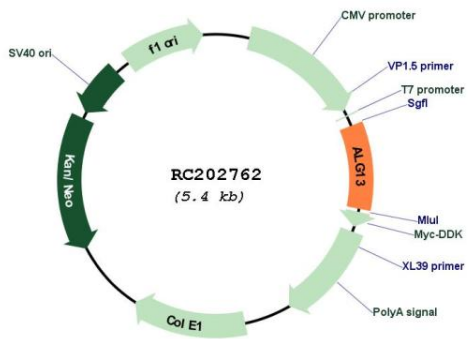
Domains: Glyco_tran_28_C

Protein Pathways: Metabolic pathways, N-Glycan biosynthesis

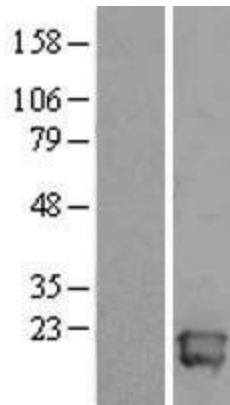
MW: 18.2 kDa

Gene Summary: The protein encoded by this gene is a subunit of a bipartite UDP-N-acetylglucosamine transferase. It heterodimerizes with asparagine-linked glycosylation 14 homolog to form a functional UDP-GlcNAc glycosyltransferase that catalyzes the second sugar addition of the highly conserved oligosaccharide precursor in endoplasmic reticulum N-linked glycosylation. Multiple transcript variants encoding different isoforms have been found for this gene. [provided by RefSeq, Dec 2009]

Product images:



Circular map for RC202762



Western blot validation of overexpression lysate (Cat# [LY413044]) using anti-DDK antibody (Cat# [TA50011-100]). Left: Cell lysates from untransfected HEK293T cells; Right: Cell lysates from HEK293T cells transfected with RC202762 using transfection reagent MegaTran 2.0 (Cat# [TT210002]).