

Product datasheet for **RC202761**

IFNGR1 (NM_000416) Human Tagged ORF Clone

Product data:

Product Type:	Expression Plasmids
Product Name:	IFNGR1 (NM_000416) Human Tagged ORF Clone
Tag:	Myc-DDK
Symbol:	IFNGR1
Synonyms:	CD119; IFNGR; IMD27A; IMD27B
Mammalian Cell Selection:	Neomycin
Vector:	pCMV6-Entry (PS100001)
E. coli Selection:	Kanamycin (25 ug/mL)



[View online »](#)

ORF Nucleotide Sequence:

>RC202761 representing NM_000416
 Red=Cloning site Blue=ORF Green=Tags(s)

TTTTGTAATACGACTCACTATAGGGCGGCCGGAATTCGTCGACTGGATCCGGTACCGAGGAGATCTGCC
 GCC**GCGATCGCC**

ATGGCTCTCTCTTTCTCCTACCCCTTGTGCATGCAGGGTGTGAGCAGGGCTGAGATGGGCACCCGCGGATC
 TGGGGCCGTCCTCAGTGCCTACACCAACTAATGTTACAATTGAATCCTATAACATGAACCCATCGTATA
 TTGGGAGTACCAGATCATGCCACAGTCCCTGTTTTTACCGTAGAGGTAAAGAATATGGTGTAAAGAAT
 TCAGAATGGATTGATGCCTGCATCAATATTTCTCATCATTATTGTAATATTTCTGATCATGTTGGTGATC
 CATCAAAATTTCTTTGGGTGAGATTAAAGCCAGGGTTGGACAAAAGAATCTGCCTATGCAAAGTCAGA
 AGAATTTGCTGTATGCCGAGATGGAAAAATTGGACCACCTAAACTGGATATCAGAAAGGAGGAGAAGCAA
 ATCATGATTGACATATTTACCCTTCAGTTTTTGTAAATGGAGACGAGCAGGAAGTCGATTATGATCCCG
 AAACCTACCTGTTACATTAGGGTGTACAATGTGTATGTGAGAATGAACGGAAGTGAATCCAGTATAAAAT
 ACTCACGCAGAAGGAAGATGATTGTGACGAGATTCAGTCCAGTTAGCGATTCCAGTATCCTCACTGAAT
 TCTCAGTACTGTGTTTCAGCAGAAGGAGTCTTACATGTGTGGGGTGTACAACGAAAAGTCAAAAGAAG
 TTTGTATTACCATTTTCAATAGCAGTATAAAAGGTTCTCTTTGGATTCCAGTTGTTGCTGCTTTACTACT
 CTTTCTAGTGCTTAGCCTGGTATTCATCTGTTTTATATTAAGAAAATTAATCCATTGAAGGAAAAAAGC
 ATAATATTACCCAAGTCCTTGATCTCTGTGGTAAGAAGTGCTACTTTAGAGACAAAACCTGAATCAAAAT
 ATGTATCACTCATCACGTACACAGCCATTTTCCTTAGAAAAGGAGGTGGTCTGTGAAGAGCCGTTGTC
 TCCAGCAACAGTTCAGGCATGCATACCGAAGACAATCCAGGAAAAGTGGAAACATACAGAAGAATTTCT
 AGTATAACAGAAGTGGTACTACTGAAGAAAATATTCCTGACGTGGTCCCGGGCAGCCATCTGACTCCAA
 TAGAGAGAGAGAGTTCTCACCTTAAAGTAGTAACCAAGTCTGAACCTGGCAGCATCGCTTAAACTCGTA
 TCACTCCAGAAAATGTTCTGAGAGTGATCACTCCAGAAAATGGTTTTGATACTGATTCCAGCTGTCTGGAA
 TCACATAGCTCCTTATCTGACTCAGAATTTCCCCCAAATAATAAAGGTGAAATAAAAAACAGAAGGACAAG
 AGCTCATAACCGTAATAAAAGCCCCACCTCCTTTGGTTATGATAAACCATGTGCTAGTGGATCTACT
 TGTGGATGATAGCGGTAAGAGTCTTGATTGTTATAGACCAACAGAAGATTCCAAAGAATTTTCA

ACGCGTACGCGGCCGCTCGAGCAGAAACTCATCTCAGAAGAGGATCTGGCAGCAAATGATATCCTGGATT
 ACAAGGATGACGACGATAAGGTTTAA

Protein Sequence:

>RC202761 representing NM_000416
 Red=Cloning site Green=Tags(s)

MALLFLLPLVMQGVSRAMGTADLGPSSVPTPTNVTIESYNNMPIVYWEYQIMPQVPVFTVEVKNYGVKN
 SEWIDACINISHHYCNISDHVGDPSNSLWVRVKARVQKESAYAKSEEFVCRDGIKPPKLDIRKEEKQ
 IMIDIHFHPSVFNVDGEQEVDPETTCYIRVYNVYVMNGSEIQYKILTQKEDDCDEIQQLAIPVSSLN
 SQYCVSAEGVLHVGVVTEKSKEVCITIFNSSIKGSLWIPVVAALLLFLVLSLVFICFYIKKINPLKEKS
 IILPKSLISVRSATLETKPESKYVSLITSYQPFLEKEVVEEPLSPATVPGMHTEDNPGKVEHTEELS
 SITEVVTTEENIPDVVPGSHLPIERESSPLSSNQSEPGSIALNSYHSRNCSESDHSRNGFDTDSSCLE
 SHSSLSDSEFPNNKGEIKTEGQELITVIKAPTSFGYDKPHVLDLLVDDSGKESLIGYRPTEDSKEFS

TRTRPLEQKLISEEDLAANDILDYKDDDDKV

Chromatograms:

https://cdn.origene.com/chromatograms/mg2527_a07.zip

Restriction Sites:

Sgfl-MluI

Cloning Scheme:


ACCN: NM_000416

ORF Size: 1467 bp

OTI Disclaimer: The molecular sequence of this clone aligns with the gene accession number as a point of reference only. However, individual transcript sequences of the same gene can differ through naturally occurring variations (e.g. polymorphisms), each with its own valid existence. This clone is substantially in agreement with the reference, but a complete review of all prevailing variants is recommended prior to use. [More info](#)

OTI Annotation: This clone was engineered to express the complete ORF with an expression tag. Expression varies depending on the nature of the gene.

Components: The ORF clone is ion-exchange column purified and shipped in a 2D barcoded Matrix tube containing 10ug of transfection-ready, dried plasmid DNA (reconstitute with 100 ul of water).

- Reconstitution Method:**
1. Centrifuge at 5,000xg for 5min.
 2. Carefully open the tube and add 100ul of sterile water to dissolve the DNA.
 3. Close the tube and incubate for 10 minutes at room temperature.
 4. Briefly vortex the tube and then do a quick spin (less than 5000xg) to concentrate the liquid at the bottom.
 5. Store the suspended plasmid at -20°C. The DNA is stable for at least one year from date of shipping when stored at -20°C.

Note: Plasmids are not sterile. For experiments where strict sterility is required, filtration with 0.22um filter is required.

RefSeq: [NM_000416.3](#)

RefSeq Size: 2059 bp

RefSeq ORF: 1470 bp

Locus ID: 3459

UniProt ID: [P15260](#)

Cytogenetics: 6q23.3

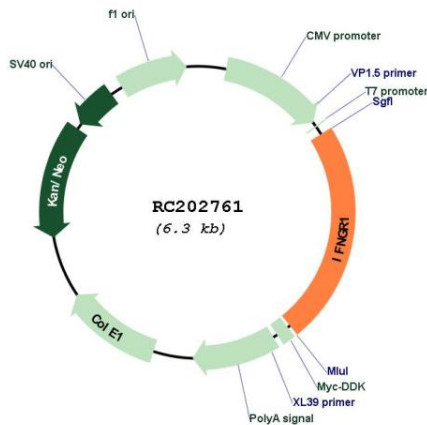
Protein Families: Druggable Genome, ES Cell Differentiation/IPS, Transmembrane

Protein Pathways: Cytokine-cytokine receptor interaction, Jak-STAT signaling pathway, Natural killer cell mediated cytotoxicity

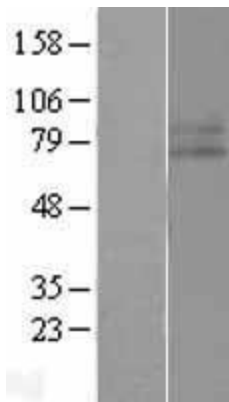
MW: 54.4 kDa

Gene Summary: This gene (IFNGR1) encodes the ligand-binding chain (alpha) of the gamma interferon receptor. Human interferon-gamma receptor is a heterodimer of IFNGR1 and IFNGR2. A genetic variation in IFNGR1 is associated with susceptibility to Helicobacter pylori infection. In addition, defects in IFNGR1 are a cause of mendelian susceptibility to mycobacterial disease, also known as familial disseminated atypical mycobacterial infection. [provided by RefSeq, Jul 2008]

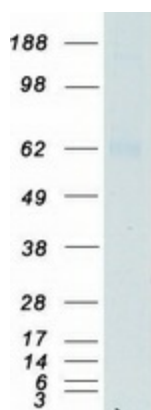
Product images:



Circular map for RC202761



Western blot validation of overexpression lysate (Cat# [LY400147]) using anti-DDK antibody (Cat# [TA50011-100]). Left: Cell lysates from untransfected HEK293T cells; Right: Cell lysates from HEK293T cells transfected with RC202761 using transfection reagent MegaTran 2.0 (Cat# [TT210002]).



Coomassie blue staining of purified IFNGR1 protein (Cat# [TP302761]). The protein was produced from HEK293T cells transfected with IFNGR1 cDNA clone (Cat# RC202761) using MegaTran 2.0 (Cat# [TT210002]).