

Product datasheet for **RC202760**

TFPI2 (NM_006528) Human Tagged ORF Clone

Product data:

Product Type: Expression Plasmids
Product Name: TFPI2 (NM_006528) Human Tagged ORF Clone
Tag: Myc-DDK
Symbol: TFPI2
Synonyms: PP5; REF1; TFPI-2
Mammalian Cell Selection: Neomycin
Vector: pCMV6-Entry (PS100001)
E. coli Selection: Kanamycin (25 ug/mL)
ORF Nucleotide Sequence: >RC202760 representing NM_006528
Red=Cloning site Blue=ORF Green=Tags(s)

TTTTGTAATACGACTCACTATAGGGCGGCCGGAATTCGTCGACTGGATCCGGTACCGAGGAGATCTGCC
GCC**CGATCGCC**

ATGGACCCCGCTCGCCCCCTGGGGCTGTCGATTCTGCTGCTTTTCCTGACGGAGGCTGCACTGGCGGATG
CTGCTCAGGAGCCAACAGGAAATAACGCGGAGATCTGTCTCCTGCCCTAGACTACGGACCCTGCCGGC
CCTACTTCTCCGTTACTACTACGACAGGTACACGCAGAGCTGCCGCCAGTTCCTGTACGGGGCTGCGAG
GGCAACGCCAACAATTTCTACACCTGGGAGGCTTGGCAGCATGCTTGCTGGAGGATAGAAAAAGTCCCA
AAGTTTCCCGGCTGCAAGTGAGTGTGGACGACCAGTGTGAGGGTCCACAGAAAAGTATTTCTTTAATCT
AAGTTCCATGACATGTGAAAAATTTCTTTCCGGTGGGTGTACCCGAACCGGATTGAGAACAGGTTTCCA
GATGAAGCTACTTGTATGGGCTTCTGCGCACCAAGAAAATTCATCATTGCTACAGTCCAAAAGATG
AGGGACTGTGCTCTGCCAATGTGACTCGCTATTATTTAATCCAAGATACAGAACCTGTGATGCTTTTAC
CTATACTGGCTGTGGAGGGAATGACAATAACTTTGTTAGCAGGGAGGATTGCAAACGTGCATGTGCAAAA
GCTTTGAAAAAGAAAAGAAGATGCCAAAGCTTCGCTTTGCCAGTAGAATCCGAAAAATTCGGAAGAAGC
AATTT

ACGCGTACGCGGCCGCTCGAGCAGAACTCATCTCAGAAGAGGATCTGGCAGCAAATGATATCCTGGATT
ACAAGGATGACGACGATAAGGTTTAA



[View online »](#)

Protein Sequence: >RC202760 representing NM_006528
 Red=Cloning site Green=Tags(s)

MDPARPLGLSILLFLTEAALGDAAQEPTGNNAEICLLPLDYGPCRALLRYYYDRYTQSCRQFLYGGCE
 GNANNFYTWEACDDACWRIEKVPKVCRLQVSVDDQCEGSTEKYFFNLSSMTCEKFFSGGCHRNRIENRFP
 DEATCMGFCAPKKIPFCYSPKDEGLCSANVTRYFNPRTYRTCDAFYTGCGGNDNNFVSREDCKRACAK
 ALKKKKKMPKLRFASRIRKIRKKQF

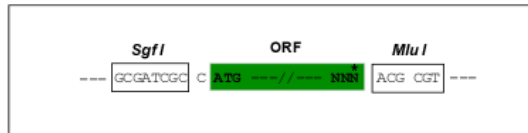
TRTRPLEQKLISEEDLAANDILDYKDDDDKV

Chromatograms: https://cdn.origene.com/chromatograms/mk8121_d07.zip

Restriction Sites: SgfI-MluI

Cloning Scheme:

Cloning sites used for ORF Shuttling:



* The last codon before the Stop codon of the ORF

ACCN: NM_006528

ORF Size: 705 bp

OTI Disclaimer: The molecular sequence of this clone aligns with the gene accession number as a point of reference only. However, individual transcript sequences of the same gene can differ through naturally occurring variations (e.g. polymorphisms), each with its own valid existence. This clone is substantially in agreement with the reference, but a complete review of all prevailing variants is recommended prior to use. [More info](#)

OTI Annotation: This clone was engineered to express the complete ORF with an expression tag. Expression varies depending on the nature of the gene.

Components: The ORF clone is ion-exchange column purified and shipped in a 2D barcoded Matrix tube containing 10ug of transfection-ready, dried plasmid DNA (reconstitute with 100 ul of water).

Reconstitution Method:

1. Centrifuge at 5,000xg for 5min.
2. Carefully open the tube and add 100ul of sterile water to dissolve the DNA.
3. Close the tube and incubate for 10 minutes at room temperature.
4. Briefly vortex the tube and then do a quick spin (less than 5000xg) to concentrate the liquid at the bottom.
5. Store the suspended plasmid at -20°C. The DNA is stable for at least one year from date of shipping when stored at -20°C.

RefSeq: [NM_006528.4](#)

RefSeq Size: 2444 bp

RefSeq ORF: 708 bp

Locus ID: 7980

UniProt ID: [P48307](#)

Cytogenetics: 7q21.3

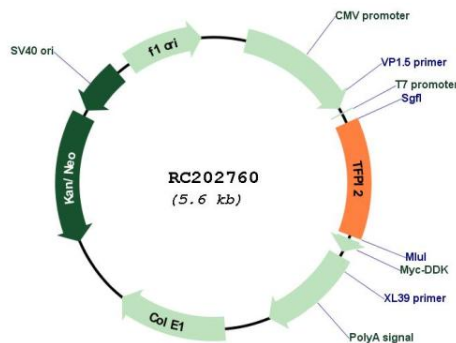
Domains: KU

Protein Families: Secreted Protein

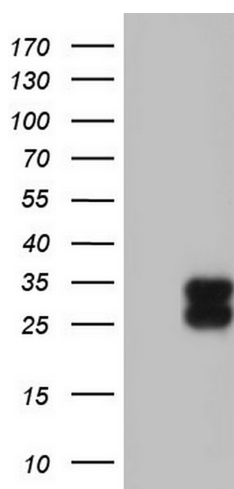
MW: 27.4 kDa

Gene Summary: This gene encodes a member of the Kunitz-type serine proteinase inhibitor family. The protein can inhibit a variety of serine proteases including factor VIIa/tissue factor, factor Xa, plasmin, trypsin, chymotrypsin and plasma kallikrein. This gene has been identified as a tumor suppressor gene in several types of cancer. Alternative splicing results in multiple transcript variants. [provided by RefSeq, Aug 2012]

Product images:



Circular map for RC202760



HEK293T cells were transfected with the pCMV6-ENTRY control (Cat# [PS100001], Left lane) or pCMV6-ENTRY TFPI2 (Cat# RC202760, Right lane) cDNA for 48 hrs and lysed. Equivalent amounts of cell lysates (5 ug per lane) were separated by SDS-PAGE and immunoblotted with anti-TFPI2 (Cat# [TA805209]). Positive lysates [LY416564] (100ug) and [LC416564] (20ug) can be purchased separately from OriGene.