

Product datasheet for RC202757

Lumican (LUM) (NM_002345) Human Tagged ORF Clone

Product data:

Product Type:	Expression Plasmids
Product Name:	Lumican (LUM) (NM_002345) Human Tagged ORF Clone
Tag:	Myc-DDK
Symbol:	Lumican
Synonyms:	LDC; SLRR2D
Mammalian Cell Selection:	Neomycin
Vector:	pCMV6-Entry (PS100001)
E. coli Selection:	Kanamycin (25 ug/mL)
ORF Nucleotide Sequence:	>RC202757 ORF sequence Red=Cloning site Blue=ORF Green=Tags(s)

TTTTGTAATACGACTCACTATAGGGCGGCCGGAATTCGTCGACTGGATCCGGTACCGAGGAGATCTGCC
GCC**CGATCGCC**

ATGAGTCTAAGTGCATTTACTCTCTTCTGGCATTGATTGGTGGTACCAGTGGCCAGTACTATGATTATG
ATTTTCCCCTATCAATTTATGGGCAATCATCACAACTGTGCACCAGAATGTAAGTCCCTGAAAGCTA
CCCAAGTGCCATGTACTGTGATGAGCTGAAATTGAAAAGTGTACCAATGGTGCCTCTGGAATCAAGTAT
CTTTACCTTAGGAATAACCAGATTGACCATATTGATGAAAAGGCCTTTGAGAATGTAAGTACTGTCAGT
GGCTCATTCTAGATCACAACTTCTAGAAACTCCAAGATAAAAGGGAGAGTTTTCTCTAAATTGAAACA
ACTGAAGAAGCTGCATATAAACCACAACAACCTGACAGAGTCTGTGGGCCACTTCCCAAATCTCTGGAG
GATCTGCAGCTTACTCATAACAAGATCACAAAGCTGGGCTCTTTTGAAGGATTGGTAAACCTGACCTTCA
TCCATCTCCAGCACAATCGGCTGAAAGAGGATGCTGTTTCAGCTGCTTTTAAAGGTCTTAAATCACTCGA
ATACCTTGACTTGAGCTTCAATCAGATAGCCAGACTGCCTTCTGGTCTCCCTGTCTCTTCTAACTCTC
TACTTAGACAACAATAAGATCAGCAACATCCCTGATGAGTATTTCAAGCGTTTTAATGCATTGCAGTATC
TGCGTTTATCTCACAACGAAGCTGGCTGATAGTGAATACCTGGAAATCTTTCAATGTGCATCCCTGGT
TGAGCTGGATCTGTCCTATAACAAGCTTAAAAACATACCAACTGTCAATGAAAACCTTAAAACTATTAC
CTGGAGGTCAATCAACTTGAGAAGTTTGACATAAAGAGCTTCTGCAAGATCCTGGGCCATTATCCTACT
CCAAGATCAAGCATTGGCTTTGGATGGCAATCGCATCTCAGAAACAGTCTTCCACCGGATATGTATGA
ATGTCTACGTGTTGCTAACGAAGTCACTCTTAAT

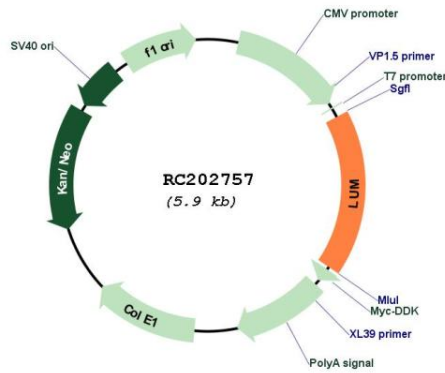
ACGCGTACGCGGCCGCTCGAGCAGAACTCATCTCAGAAGAGGATCTGGCAGCAAATGATATCCTGGATT
ACAAGGATGACGACGATAAGGTTTAA



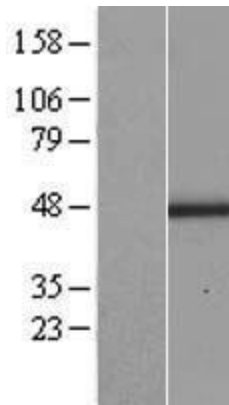
[View online »](#)

Reconstitution Method:	<ol style="list-style-type: none">1. Centrifuge at 5,000xg for 5min.2. Carefully open the tube and add 100ul of sterile water to dissolve the DNA.3. Close the tube and incubate for 10 minutes at room temperature.4. Briefly vortex the tube and then do a quick spin (less than 5000xg) to concentrate the liquid at the bottom.5. Store the suspended plasmid at -20°C. The DNA is stable for at least one year from date of shipping when stored at -20°C.
RefSeq:	NM_002345.4
RefSeq Size:	2116 bp
RefSeq ORF:	1017 bp
Locus ID:	4060
UniProt ID:	P51884
Cytogenetics:	12q21.33
Domains:	LRRNT, LRR, LRR_TYP, LRR_SD22, LRR_BAC
Protein Families:	Secreted Protein
MW:	38.4 kDa
Gene Summary:	<p>This gene encodes a member of the small leucine-rich proteoglycan (SLRP) family that includes decorin, biglycan, fibromodulin, keratocan, epiphygan, and osteoglycin. In these bifunctional molecules, the protein moiety binds collagen fibrils and the highly charged hydrophilic glycosaminoglycans regulate interfibrillar spacings. Lumican is the major keratan sulfate proteoglycan of the cornea but is also distributed in interstitial collagenous matrices throughout the body. Lumican may regulate collagen fibril organization and circumferential growth, corneal transparency, and epithelial cell migration and tissue repair. [provided by RefSeq, Jul 2008]</p>

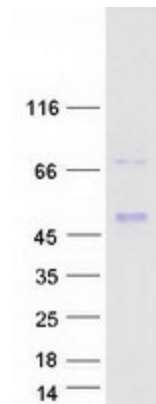
Product images:



Circular map for RC202757



Western blot validation of overexpression lysate (Cat# [LY419389]) using anti-DDK antibody (Cat# [TA50011-100]). Left: Cell lysates from untransfected HEK293T cells; Right: Cell lysates from HEK293T cells transfected with RC202757 using transfection reagent MegaTran 2.0 (Cat# [TT210002]).



Coomassie blue staining of purified LUM protein (Cat# [TP302757]). The protein was produced from HEK293T cells transfected with LUM cDNA clone (Cat# RC202757) using MegaTran 2.0 (Cat# [TT210002]).