

## Product datasheet for **RC202756**

### CD69 (NM\_001781) Human Tagged ORF Clone

#### Product data:

**Product Type:** Expression Plasmids  
**Product Name:** CD69 (NM\_001781) Human Tagged ORF Clone  
**Tag:** Myc-DDK  
**Symbol:** CD69  
**Synonyms:** AIM; BL-AC/P26; CLEC2C; EA1; GP32/28; MLR-3  
**Mammalian Cell Selection:** Neomycin  
**Vector:** pCMV6-Entry (PS100001)  
**E. coli Selection:** Kanamycin (25 ug/mL)  
**ORF Nucleotide Sequence:** >RC202756 ORF sequence  
 Red=Cloning site Blue=ORF Green=Tags(s)

TTTTGTAATACGACTCACTATAGGGCGGCCGGAATTCGTCGACTGGATCCGGTACCGAGGAGATCTGCC  
 GCC**CGATCGCC**

ATGAGCTCTGAAAATTGTTTCGTAGCAGAGAACAGCTCTTTGCATCCGGAGAGTGGACAAGAAAATGATG  
 CCACCAGTCCCCATTTCTCAACACGTCATGAAGGGTCCTCCAAGTTCCTGCTGTGTGCTGTAATGAA  
 TGTGGTCTTCATACCATTTAATCATAGCTCATTGCCTTATCAGTGGCCAATAACAATTGCCAGGC  
 CAATACACATTCTCAATGCCATCAGACAGCCATGTTTCTCATGCTCTGAGGACTGGGTTGGCTACCAGA  
 GGAAATGCTACTTTATTTCTACTGTGAAGAGGAGCTGGACTTCAGCCAAAATGCTTGTCTGAACATGG  
 TGCTACTCTTGCTGTATTGATTCTGAAAAGGACATGAACTTTCTAAAACGATACGCAGGTAGAGAGGAA  
 CACTGGGTTGGACTGAAAAGGAACCTGGTCACCCATGGAAGTGGTCAAATGGCAAAGAATTTAACAACT  
 GGTTCAACGTTACAGGTCTGACAAGTGTGTTTTCTGAAAAACACAGAGGTGAGCAGCATGGAATGTGA  
 GAAGAATTTATACTGGATATGTAACAAACCTTACAAA

**ACGCGT**ACGCGGCCGCTCGAGCAGAACTCATCTCAGAAGAGGATCTGGCAGCAAATGATATCCTGGATT  
 ACAAGGATGACGACGATAAGGTTTAA

**Protein Sequence:** >RC202756 protein sequence  
 Red=Cloning site Green=Tags(s)

MSENCFVAENSSLHPESGQENDATSPHFSTRHEGSFQVPVLCAYMNVFITILIALIALSVGQYNCPPG  
 QYTFMPSDSHVSSCEDWVGYQRKCYFISTVKRSWTSQAQACSEHGATLAVIDSEKDMNFKRYAGREE  
 HWVGLKKEPGHPWKWSNGKEFNWFNVTGSDKCVFLKNTEVSSMECEKNLYWICNKPYPK

**TRTRPLEQKLI**SEEDLAANDILDYKDDDDKV



[View online »](#)

**Chromatograms:** [https://cdn.origene.com/chromatograms/mk6145\\_d05.zip](https://cdn.origene.com/chromatograms/mk6145_d05.zip)

**Restriction Sites:** Sgfl-MluI

**Cloning Scheme:**



**ACCN:** NM\_001781

**ORF Size:** 597 bp

**OTI Disclaimer:** Due to the inherent nature of this plasmid, standard methods to replicate additional amounts of DNA in *E. coli* are highly likely to result in mutations and/or rearrangements. Therefore, OriGene does not guarantee the capability to replicate this plasmid DNA. Additional amounts of DNA can be purchased from OriGene with batch-specific, full-sequence verification at a reduced cost. Please contact our customer care team at [custsupport@origene.com](mailto:custsupport@origene.com) or by calling 301.340.3188 option 3 for pricing and delivery.

The molecular sequence of this clone aligns with the gene accession number as a point of reference only. However, individual transcript sequences of the same gene can differ through naturally occurring variations (e.g. polymorphisms), each with its own valid existence. This clone is substantially in agreement with the reference, but a complete review of all prevailing variants is recommended prior to use. [More info](#)

**OTI Annotation:** This clone was engineered to express the complete ORF with an expression tag. Expression varies depending on the nature of the gene.

**Components:** The ORF clone is ion-exchange column purified and shipped in a 2D barcoded Matrix tube containing 10ug of transfection-ready, dried plasmid DNA (reconstitute with 100 ul of water).

**Reconstitution Method:**

1. Centrifuge at 5,000xg for 5min.
2. Carefully open the tube and add 100ul of sterile water to dissolve the DNA.
3. Close the tube and incubate for 10 minutes at room temperature.
4. Briefly vortex the tube and then do a quick spin (less than 5000xg) to concentrate the liquid at the bottom.
5. Store the suspended plasmid at -20°C. The DNA is stable for at least one year from date of shipping when stored at -20°C.

**Note:** Plasmids are not sterile. For experiments where strict sterility is required, filtration with 0.22um filter is required.

**RefSeq:** [NM\\_001781.2](#)

**RefSeq Size:** 1676 bp

**RefSeq ORF:** 600 bp

**Locus ID:** 969

**UniProt ID:** [Q07108](#)

**Cytogenetics:** 12p13.31

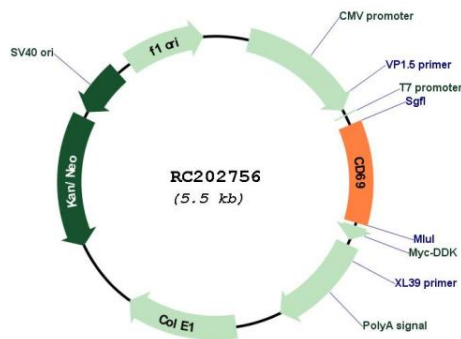
**Domains:** CLECT

**Protein Families:** Druggable Genome, ES Cell Differentiation/IPS, Transmembrane

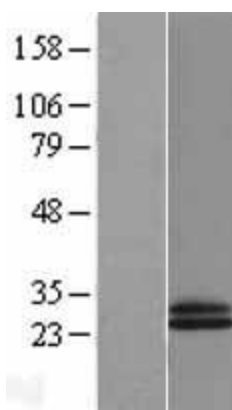
**MW:** 22.6 kDa

**Gene Summary:** This gene encodes a member of the calcium dependent lectin superfamily of type II transmembrane receptors. Expression of the encoded protein is induced upon activation of T lymphocytes, and may play a role in proliferation. Furthermore, the protein may act to transmit signals in natural killer cells and platelets. [provided by RefSeq, Aug 2011]

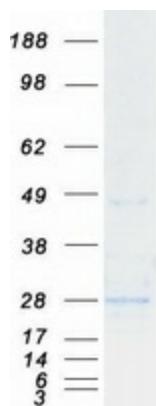
### Product images:



Circular map for RC202756



Western blot validation of overexpression lysate (Cat# [LY400672]) using anti-DDK antibody (Cat# [TA50011-100]). Left: Cell lysates from untransfected HEK293T cells; Right: Cell lysates from HEK293T cells transfected with RC202756 using transfection reagent MegaTran 2.0 (Cat# [TT210002]).



Coomassie blue staining of purified CD69 protein (Cat# [TP302756]). The protein was produced from HEK293T cells transfected with CD69 cDNA clone (Cat# RC202756) using MegaTran 2.0 (Cat# [TT210002]).