

## Product datasheet for RC202753

### Decorin (DCN) (NM\_001920) Human Tagged ORF Clone

#### Product data:

Product Type:	Expression Plasmids
Product Name:	Decorin (DCN) (NM_001920) Human Tagged ORF Clone
Tag:	Myc-DDK
Symbol:	Decorin
Synonyms:	CSCD; DSPG2; PG40; PGII; PGS2; SLRR1B
Mammalian Cell Selection:	Neomycin
Vector:	pCMV6-Entry (PS100001)
E. coli Selection:	Kanamycin (25 ug/mL)
ORF Nucleotide Sequence:	>RC202753 ORF sequence Red=Cloning site Blue=ORF Green=Tags(s)

TTTTGTAATACGACTCACTATAGGGCGCCGGGAATTCGTCGACTGGATCCGGTACCGAGGAGATCTGCC  
GCC**CGATCGCC**

ATGAAGGCCACTATCATCCTCTCTGCTTGCACAAGTTTCTGGGCTGGACCGTTTCAACAGAGAGGCT  
TATTTGACTTTATGCTAGAAGATGAGGCTTCTGGGATAGGCCCAGAAGTTCTGATGACCGCGACTTCGA  
GCCCTCCCTAGGCCAGTGTGCCCTTCCGCTGTCAATGCCATCTTCGAGTGGTCCAGTGTCTGATTTG  
GGTCTGGACAAAGTGCCAAAGGATCTTCCCCTGACACAACCTCTGCTAGACCTGCAAAACAACAAAATAA  
CCGAAATCAAAGATGGAGACTTTAAGAACCTGAAGAACCTTCACGCATTGATTCTTGCAACAATAAAAT  
TAGCAAAGTTAGTCTGGAGCATTACACCTTTGGTGAAGTTGGAACGACTTTATCTGTCCAAGAATCAG  
CTGAAGGAATTGCCAGAAAAATGCCAAAACCTTTCAGGAGCTGCGTGCCCATGAGAATGAGATACCA  
AAGTGCAGAAAAGTTACTTTCAATGGACTGAACCAGATGATTGTCTAGAAGTGGGCACCAATCCGCTGAA  
GAGCTCAGGAATTGAAAATGGGGCTTCCAGGGAATGAAGAAGCTCTCTACATCCGCAATTGCTGATACC  
AATATCACCAGCATTCTCAAGTCTTCTCTTCCCTTACGGAATTACATCTTGATGGCAACAAAATCA  
GCAGAGTTGATGCAGCTAGCCTGAAAGGACTGAATAATTTGGCTAAGTTGGGATTGAGTTTCAACAGCAT  
CTCTGCTGTTGACAAATGGCTCTCTGGCCAACACGCCTCATCTGAGGGAGCTTCACTTGGACAACAACAAG  
CTTACCAGAGTACCTGGTGGGCTGGCAGAGCATAAGTACATCCAGTTGTCTACCTCATAACAACAATA  
TCTCTGTAGTTGGATCAAGTGACTTCTGCCACCTGGACACAACACCAAAAAGGCTTCTTATTCCGGTGT  
GAGTCTTTTCAGCAACCCGGTCCAGTACTGGGAGATACAGCCATCCACCTTCAGATGTGTCTACGTGCGC  
TCTGCCATTCACTCGGAAACTATAAG

**ACGCGT**ACGCGGCCGCTCGAGCAGAAACTCATCTCAGAAGAGGATCTGGCAGCAATGATATCCTGGATT  
ACAAGGATGACGACGATAAGGTTAA



[View online »](#)

**Protein Sequence:** >RC202753 protein sequence  
Red=Cloning site Green=Tags(s)

MKATIILLLLAQVSWAGPFQQRGLDFMLEDEASGIGPEVPDDRDFEPSLGPVPCFRCQCHLRVVQCSDL  
 GLDKVPKDLPPDTLLDLQNNKITEIKDGFKNLKNLHALILVNNKISKVSPGAF TPLVKLERLYLSKNQ  
 LKELPEKMPKTLQELRAHENEITKVRKVTFNGLNQMIIVIELGTNPLKSSGIENGAFQGMKKLSYIRIADT  
 NITSIPQGLPSSL TELHLDGNKISRVDAA SLKGLNNLAKLGLSFNSISAVDNGSLANTPHLRELHLDNNK  
 LTRVPGGLAEHKYIQVVYLHNNNISVVGSSDFCPPGHNTKKASYSGVSLFSNPVQYWEIQPSTFRVCYVYR  
 SAIQLGNYK

TRTRPLEQKLISEEDLAANDILDYKDDDDKV

**Chromatograms:** [https://cdn.origene.com/chromatograms/mk6079\\_h10.zip](https://cdn.origene.com/chromatograms/mk6079_h10.zip)

**Restriction Sites:** SgfI-MluI

**Cloning Scheme:**



**ACCN:** NM\_001920

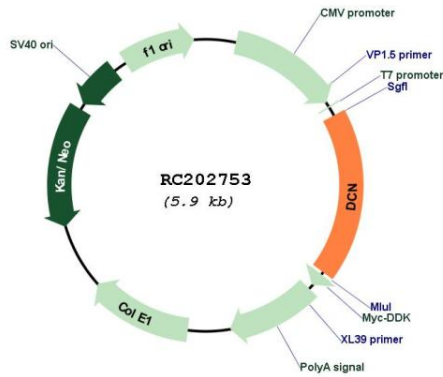
**ORF Size:** 1077 bp

**OTI Disclaimer:** Due to the inherent nature of this plasmid, standard methods to replicate additional amounts of DNA in E. coli are highly likely to result in mutations and/or rearrangements. Therefore, OriGene does not guarantee the capability to replicate this plasmid DNA. Additional amounts of DNA can be purchased from OriGene with batch-specific, full-sequence verification at a reduced cost. Please contact our customer care team at [custsupport@origene.com](mailto:custsupport@origene.com) or by calling 301.340.3188 option 3 for pricing and delivery.

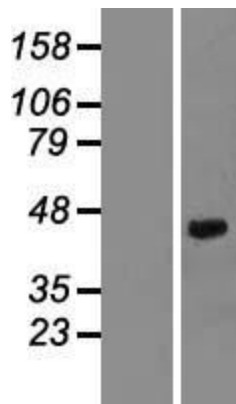
The molecular sequence of this clone aligns with the gene accession number as a point of reference only. However, individual transcript sequences of the same gene can differ through naturally occurring variations (e.g. polymorphisms), each with its own valid existence. This clone is substantially in agreement with the reference, but a complete review of all prevailing variants is recommended prior to use. [More info](#)

<b>OTI Annotation:</b>	This clone was engineered to express the complete ORF with an expression tag. Expression varies depending on the nature of the gene.
<b>Components:</b>	The ORF clone is ion-exchange column purified and shipped in a 2D barcoded Matrix tube containing 10ug of transfection-ready, dried plasmid DNA (reconstitute with 100 ul of water).
<b>Reconstitution Method:</b>	<ol style="list-style-type: none"><li>1. Centrifuge at 5,000xg for 5min.</li><li>2. Carefully open the tube and add 100ul of sterile water to dissolve the DNA.</li><li>3. Close the tube and incubate for 10 minutes at room temperature.</li><li>4. Briefly vortex the tube and then do a quick spin (less than 5000xg) to concentrate the liquid at the bottom.</li><li>5. Store the suspended plasmid at -20°C. The DNA is stable for at least one year from date of shipping when stored at -20°C.</li></ol>
<b>RefSeq:</b>	<a href="#">NM_001920.5</a>
<b>RefSeq Size:</b>	2305 bp
<b>RefSeq ORF:</b>	1080 bp
<b>Locus ID:</b>	1634
<b>UniProt ID:</b>	<a href="#">P07585</a>
<b>Cytogenetics:</b>	12q21.33
<b>Domains:</b>	LRRNT, LRR, LRR_TYP, LRR_BAC, LRR_PS
<b>Protein Families:</b>	Druggable Genome, Secreted Protein
<b>Protein Pathways:</b>	TGF-beta signaling pathway
<b>MW:</b>	39.7 kDa
<b>Gene Summary:</b>	<p>This gene encodes a member of the small leucine-rich proteoglycan family of proteins. Alternative splicing results in multiple transcript variants, at least one of which encodes a preproprotein that is proteolytically processed to generate the mature protein. This protein plays a role in collagen fibril assembly. Binding of this protein to multiple cell surface receptors mediates its role in tumor suppression, including a stimulatory effect on autophagy and inflammation and an inhibitory effect on angiogenesis and tumorigenesis. This gene and the related gene biglycan are thought to be the result of a gene duplication. Mutations in this gene are associated with congenital stromal corneal dystrophy in human patients. [provided by RefSeq, Nov 2015]</p>

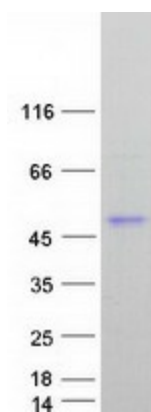
Product images:



Circular map for RC202753



Western blot validation of overexpression lysate (Cat# [LY419655]) using anti-DDK antibody (Cat# [TA50011-100]). Left: Cell lysates from untransfected HEK293T cells; Right: Cell lysates from HEK293T cells transfected with RC202753 using transfection reagent MegaTran 2.0 (Cat# [TT210002]).



Coomassie blue staining of purified DCN protein (Cat# [TP302753]). The protein was produced from HEK293T cells transfected with DCN cDNA clone (Cat# RC202753) using MegaTran 2.0 (Cat# [TT210002]).