

Product datasheet for RC202748

Metallothionein (MT2A) (NM_005953) Human Tagged ORF Clone

Product data:

Product Type:	Expression Plasmids
Product Name:	Metallothionein (MT2A) (NM_005953) Human Tagged ORF Clone
Tag:	Myc-DDK
Symbol:	Metallothionein
Synonyms:	MT-2; MT-II; MT2
Mammalian Cell Selection:	Neomycin
Vector:	pCMV6-Entry (PS100001)
E. coli Selection:	Kanamycin (25 ug/mL)
ORF Nucleotide Sequence:	<p>>RC202748 ORF sequence</p> <p>Red=Cloning site Blue=ORF Green=Tags(s)</p> <p>TTTGTAAATACGACTCACTATAGGGCGGCCGGAATTCGTCGACTGGATCCGGTACCGAGGAGATCTGCCGCCGCGATCGCC</p> <p>ATGGATCCCAACTGCTCCTGCGCCGCCGGTGACTCCTGCACCTGCGCCGGCTCCTGCAAATGCAAAGAGTGCAAATGCACCTCCTGCAAGAAAGCTGCTGCTCCTGCTGCCCTGTGGGCTGTGCCAAGTGTGCCAGGGCTGCATCTGCAAAGGGGCGTCGGACAAGTCAGCTGCTGCGCC</p> <p>ACGCGTACGCGGCCGCTCGAGCAGAAACTCATCTCAGAAGAGGATCTGGCAGCAAATGATATCCTGGATTACAAGGATGACGACGATAAGGTTTAA</p>
Protein Sequence:	<p>>RC202748 protein sequence</p> <p>Red=Cloning site Green=Tags(s)</p> <p>MDPNCSAAGDSCTCAGSCKCKECKCTSCKKSCCSCPVGCAKCAQGCICKGASDKCSCCA</p> <p>TRTRPLEQKLISEEDLAANDILDYKDDDDKV</p>
Chromatograms:	https://cdn.origene.com/chromatograms/mk6212_d07.zip
Restriction Sites:	SgfI-MluI


[View online »](#)

Cloning Scheme:



ACCN: NM 005953

ORF Size: 183 bp

OTI Disclaimer: The molecular sequence of this clone aligns with the gene accession number as a point of reference only. However, individual transcript sequences of the same gene can differ through naturally occurring variations (e.g. polymorphisms), each with its own valid existence. This clone is substantially in agreement with the reference, but a complete review of all prevailing variants is recommended prior to use. More info

OTI Annotation: This clone was engineered to express the complete ORF with an expression tag. Expression varies depending on the nature of the gene.

Components: The ORF clone is ion-exchange column purified and shipped in a 2D barcoded Matrix tube containing 10ug of transfection-ready, dried plasmid DNA (reconstitute with 100 ul of water).

Reconstitution Method:

1. Centrifuge at 5,000xg for 5min.
2. Carefully open the tube and add 100ul of sterile water to dissolve the DNA.
3. Close the tube and incubate for 10 minutes at room temperature.
4. Briefly vortex the tube and then do a quick spin (less than 5000xg) to concentrate the liquid at the bottom.
5. Store the suspended plasmid at -20°C. The DNA is stable for at least one year from date of shipping when stored at -20°C.

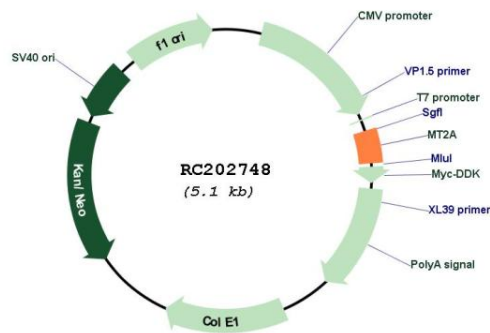
Note: Plasmids are not sterile. For experiments where strict sterility is required, filtration with 0.22um filter is required.

RefSeq: NM 005953.5

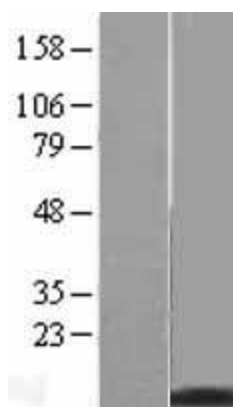
RefSeq Size: 466 bp
 RefSeq ORF: 186 bp
 Locus ID: 4502
 UniProt ID: [P02795](#)
 Cytogenetics: 16q13
 MW: 6 kDa

Gene Summary: This gene is a member of the metallothionein family of genes. Proteins encoded by this gene family are low in molecular weight, are cysteine-rich, lack aromatic residues, and bind divalent heavy metal ions, altering the intracellular concentration of heavy metals in the cell. These proteins act as anti-oxidants, protect against hydroxyl free radicals, are important in homeostatic control of metal in the cell, and play a role in detoxification of heavy metals. The encoded protein interacts with the protein encoded by the homeobox containing 1 gene in some cell types, controlling intracellular zinc levels, affecting apoptotic and autophagy pathways. Some polymorphisms in this gene are associated with an increased risk of cancer. [provided by RefSeq, Sep 2017]

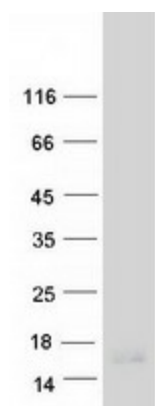
Product images:



Circular map for RC202748



Western blot validation of overexpression lysate (Cat# [LY416961]) using anti-DDK antibody (Cat# [TA50011-100]). Left: Cell lysates from untransfected HEK293T cells; Right: Cell lysates from HEK293T cells transfected with RC202748 using transfection reagent MegaTran 2.0 (Cat# [TT210002]).



Coomassie blue staining of purified MT2A protein (Cat# [TP302748]). The protein was produced from HEK293T cells transfected with MT2A cDNA clone (Cat# RC202748) using MegaTran 2.0 (Cat# [TT210002]).