

Product datasheet for RC202746

CELA2A (NM_033440) Human Tagged ORF Clone

Product data:

Product Type:	Expression Plasmids
Product Name:	CELA2A (NM_033440) Human Tagged ORF Clone
Tag:	Myc-DDK
Symbol:	CELA2A
Synonyms:	AOMS4; ELA2A; PE-1
Mammalian Cell Selection:	Neomycin
Vector:	pCMV6-Entry (PS100001)
E. coli Selection:	Kanamycin (25 ug/mL)
ORF Nucleotide Sequence:	>RC202746 ORF sequence Red=Cloning site Blue=ORF Green=Tags(s)

TTTTGTAATACGACTCACTATAGGGCGGCCGGAATTCGTCGACTGGATCCGGTACCGAGGAGATCTGCC
GCC**CGATCGCC**

ATGATAAGGACGCTGCTGCTGTCCACTTTGGTGGCTGGAGCCCTCAGTTGTGGGACCCCACTTACCCAC
CTTATGTGACTAGGGTGGTTGGCGGTGAAGAAGCGAGGCCCAACAGCTGGCCCTGGCAGGTCTCCCTGCA
GTACAGCTCCAATGGCAAGTGGTACCACACCTGCGGAGGGTCCCTGATAGCCAACAGCTGGTCTGACG
GCTGCCACTGCATCAGCTCCTCCAGGACCTACCGGTGGGCTGGGCCGGCACAACCTCTACGTTGCGG
AGTCCGGCTCGCTGGCAGTCAGTGTCTTAAGATTGTGGTGCACAAGGACTGGAACCTCAACCAAATCTC
CAAAGGGAACGACATTGCCCTGCTCAAACCTGGCTAACCCCGTCTCCCTCACCGACAAGATCCAGCTGGCC
TGCTCCCTCCTGCCGGCACCATTCTACCCAACAACCTACCCCTGCTACGTACCGGGCTGGGGAAGGCTGC
AGACCAACGGGGCTGTTCTGATGTCTGCAGCAGGGCCGGTTGCTGGTTGTGGACTATGCCACCTGCTC
CAGCTCTGCCTGGTGGGGCAGCAGCGTGAAAACAGTATGATCTGTGCTGGGGGTGATGGCGTGATCTCC
AGCTGCAACGGAGACTCTGGCGGGCCACTGAACTGTGAGGCGTCTGACGGCCGGTGGCAGGTGCACGGCA
TCGTGAGCTTCGGGTCTCGCCTCGGCTGCAACTACTACCACAAGCCCTCCGTCTTACGCGGGTCTCCAA
TTACATCGACTGGATCAATTCGGTGATTGCAAATAAC

ACGCGTACGCGGCCGCTCGAGCAGAAACTCATCTCAGAAGAGGATCTGGCAGCAAATGATATCCTGGATT
ACAAGGATGACGACGATAAGGTTTAA



[View online »](#)

Protein Sequence: >RC202746 protein sequence
Red=Cloning site Green=Tags(s)

MIRTL L L S T L V A G A L S C G D P T Y P P Y V T R V V G G E E A R P N S W P Q V S L Q Y S S N G K W Y H T C G G S L I A N S W V L T
 A A H C I S S R T Y R V G L G R H N L Y V A E S G S L A V S V S K I V V H K D W N S N Q I S K G N D I A L L K L A N P V S L T D K I Q L A
 C L P P A G T I L P N N Y P C Y V T G W G R L Q T N G A V P D V L Q Q G R L L V V D Y A T C S S S A W W G S S V K T S M I C A G G D G V I S
 S C N G D S G G P L N C Q A S D G R W Q V H G I V S F G S R L G C N Y Y H K P S V F T R V S N Y I D W I N S V I A N N

TRTRPLEQKLISEEDLAANDILDYKDDDDKV

Chromatograms: https://cdn.origene.com/chromatograms/mk6145_h05.zip

Restriction Sites: SgfI-MluI

Cloning Scheme:



ACCN: NM_033440

ORF Size: 807 bp

OTI Disclaimer: The molecular sequence of this clone aligns with the gene accession number as a point of reference only. However, individual transcript sequences of the same gene can differ through naturally occurring variations (e.g. polymorphisms), each with its own valid existence. This clone is substantially in agreement with the reference, but a complete review of all prevailing variants is recommended prior to use. [More info](#)

OTI Annotation: This clone was engineered to express the complete ORF with an expression tag. Expression varies depending on the nature of the gene.

Components: The ORF clone is ion-exchange column purified and shipped in a 2D barcoded Matrix tube containing 10ug of transfection-ready, dried plasmid DNA (reconstitute with 100 ul of water).

Reconstitution Method:

1. Centrifuge at 5,000xg for 5min.
2. Carefully open the tube and add 100ul of sterile water to dissolve the DNA.
3. Close the tube and incubate for 10 minutes at room temperature.
4. Briefly vortex the tube and then do a quick spin (less than 5000xg) to concentrate the liquid at the bottom.
5. Store the suspended plasmid at -20°C. The DNA is stable for at least one year from date of shipping when stored at -20°C.

RefSeq: [NM_033440.3](#)

RefSeq Size: 934 bp

RefSeq ORF: 810 bp

Locus ID: 63036

UniProt ID: [P08217](#)

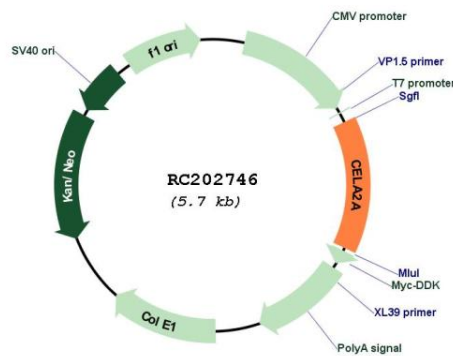
Cytogenetics: 1p36.21

Protein Families: Druggable Genome, Protease, Secreted Protein

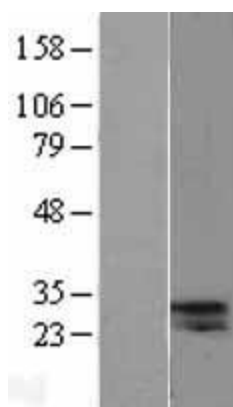
MW: 28.9 kDa

Gene Summary: Elastases form a subfamily of serine proteases that hydrolyze many proteins in addition to elastin. Humans have six elastase genes which encode the structurally similar proteins elastase 1, 2, 2A, 2B, 3A, and 3B. Like most of the human elastases, elastase 2A is secreted from the pancreas as a zymogen. In other species, elastase 2A has been shown to preferentially cleave proteins after leucine, methionine, and phenylalanine residues. [provided by RefSeq, May 2009]

Product images:



Circular map for RC202746



Western blot validation of overexpression lysate (Cat# [LY403249]) using anti-DDK antibody (Cat# [TA50011-100]). Left: Cell lysates from untransfected HEK293T cells; Right: Cell lysates from HEK293T cells transfected with RC202746 using transfection reagent MegaTran 2.0 (Cat# [TT210002]).