

Product datasheet for **RC202741**

TGF alpha (TGFA) (NM_003236) Human Tagged ORF Clone

Product data:

Product Type: Expression Plasmids
Product Name: TGF alpha (TGFA) (NM_003236) Human Tagged ORF Clone
Tag: Myc-DDK
Symbol: TGF alpha
Synonyms: TFGA
Mammalian Cell Selection: Neomycin
Vector: pCMV6-Entry (PS100001)
E. coli Selection: Kanamycin (25 ug/mL)
ORF Nucleotide Sequence: >RC202741 ORF sequence
Red=Cloning site Blue=ORF Green=Tags(s)

TTTTGTAATACGACTCACTATAGGGCGGCCGGAATTCGTCGACTGGATCCGGTACCGAGGAGATCTGCC
GCC**CGATCGCC**

ATGGTCCCCTCGGCTGGACAGCTCGCCCTGTTTCGCTCTGGGTATTGTGTTGGCTGCGTGCCAGGCCCTTGG
AGAACAGCACGTCCCGCTGAGTGACCCGCCCGTGGCTGCAGCAGTGGTGTCCCATTTAATGACTGCC
AGATCCACACTCAGTTCTGCTCCATGGAACCTGCAGGTTTTGGTGCAGGAGGACAAGCCAGCATGT
GTCTGCCATTCTGGGTACGTTGGTGCACGCTGTGAGCATGCGGACCTCCTGGCCGTGGTGGCTGCCAGCC
AGAAGAAGCAGGCCATCACCGCCTTGGTGGTGGTCTCCATCGTGGCCCTGGCTGTCCTTATCATCATG
TGTGCTGATACACTGCTGCCAGGTCCGAAAACACTGTGAGTGGTCCCGGCCCTCATCTGCCGGCAGGAG
AAGCCAGCGCCCTCCTGAAGGGAAGAACCCTTCTGCTGCCACTCAGAAACAGTGGTC

ACGCGTACGCGGCCGCTCGAGCAGAACTCATCTCAGAAGAGGATCTGGCAGCAAATGATATCCTGGATT
ACAAGGATGACGACGATAAGGTTTAA

Protein Sequence: >RC202741 protein sequence
Red=Cloning site Green=Tags(s)

MVPSAGQLALFALGIVLAACQALENSTSPLSDPPVAAA VVSHFNDCPDSHTQFCFHGTCRFLVQEDKPAC
VCHSGYVGARCEHADLLAVVAASQKKQAITALVVVSIVALAVLIITCVLIHCCQVRKHCEWCRALICRHE
KPSALLKGRACCHSETVV

TRTRPLEQKLI SEEDLAANDILDYKDDDDKV

Chromatograms: https://cdn.origene.com/chromatograms/mk6050_c10.zip



[View online »](#)

Restriction Sites: SgfI-MluI

Cloning Scheme:



ACCN: NM_003236

ORF Size: 477 bp

OTI Disclaimer: The molecular sequence of this clone aligns with the gene accession number as a point of reference only. However, individual transcript sequences of the same gene can differ through naturally occurring variations (e.g. polymorphisms), each with its own valid existence. This clone is substantially in agreement with the reference, but a complete review of all prevailing variants is recommended prior to use. [More info](#)

OTI Annotation: This clone was engineered to express the complete ORF with an expression tag. Expression varies depending on the nature of the gene.

Components: The ORF clone is ion-exchange column purified and shipped in a 2D barcoded Matrix tube containing 10ug of transfection-ready, dried plasmid DNA (reconstitute with 100 ul of water).

Reconstitution Method:

1. Centrifuge at 5,000xg for 5min.
2. Carefully open the tube and add 100ul of sterile water to dissolve the DNA.
3. Close the tube and incubate for 10 minutes at room temperature.
4. Briefly vortex the tube and then do a quick spin (less than 5000xg) to concentrate the liquid at the bottom.
5. Store the suspended plasmid at -20°C. The DNA is stable for at least one year from date of shipping when stored at -20°C.

RefSeq: [NM_003236.4](#)

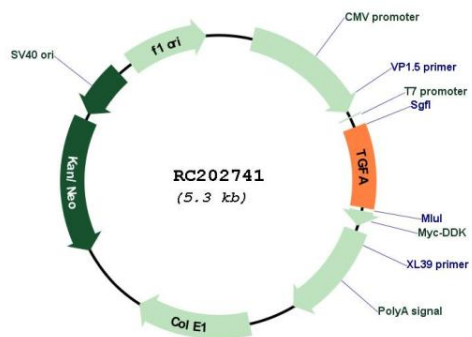
RefSeq Size: 4326 bp

RefSeq ORF: 483 bp

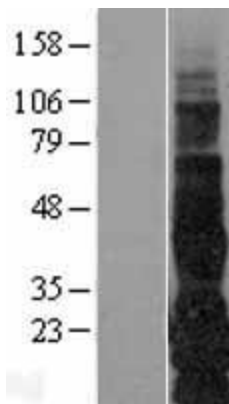
Locus ID: 7039

UniProt ID: [P01135](#)
Cytogenetics: 2p13.3
Protein Families: Druggable Genome, Secreted Protein, Transmembrane
Protein Pathways: ErbB signaling pathway, Glioma, Non-small cell lung cancer, Pancreatic cancer, Pathways in cancer, Prostate cancer, Renal cell carcinoma
MW: 16.9 kDa
Gene Summary: This gene encodes a growth factor that is a ligand for the epidermal growth factor receptor, which activates a signaling pathway for cell proliferation, differentiation and development. This protein may act as either a transmembrane-bound ligand or a soluble ligand. This gene has been associated with many types of cancers, and it may also be involved in some cases of cleft lip/palate. Alternatively spliced transcript variants encoding different isoforms have been found for this gene. [provided by RefSeq, Sep 2011]

Product images:



Circular map for RC202741



Western blot validation of overexpression lysate (Cat# [LY418820]) using anti-DDK antibody (Cat# [TA50011-100]). Left: Cell lysates from untransfected HEK293T cells; Right: Cell lysates from HEK293T cells transfected with RC202741 using transfection reagent MegaTran 2.0 (Cat# [TT210002]).