

Product datasheet for RC202735

PAIP1 (NM_182789) Human Tagged ORF Clone

Product data:

Product Type:	Expression Plasmids
Product Name:	PAIP1 (NM_182789) Human Tagged ORF Clone
Tag:	Myc-DDK
Symbol:	PAIP1
Mammalian Cell Selection:	Neomycin
Vector:	pCMV6-Entry (PS100001)
E. coli Selection:	Kanamycin (25 ug/mL)
ORF Nucleotide Sequence:	>RC202735 ORF sequence Red=Cloning site Blue=ORF Green=Tags(s)

TTTTGTAATACGACTCACTATAGGGCGGCCGGAATTCGTCGACTGGATCCGGTACCGAGGAGATCTGCC
GCC**CGATCGCC**

ATGTCGGACGGTTTCGATCGGGCCCCAGAGCAAACGAGGCCCTGAGAGCTCCACCTAGTTCACAGGATA
AAATCCCACAGCAGAACTCGGAGTCAGCAATGGCTAAGCCCCAGGTGGTTGTAGCTCCTGTATTAATGTC
TAAGCTGTCTGTGAATGCCCTGAATTTACCCCTCAGGTTATTCTTCCAGTTACACAGAATCCTATGAG
GATGGTTGTGAGGATTATCCTACTCTATCAGAATATGTTACAGGATTTTTGAATCATCTTACAGAGCAGC
CTGGCAGTTTTGAAACTGAAATGAACAGTTTGCAGAGACCCTGAATGGTTGTGTTACAACAGATGATGC
TTTGCAAGAACTTGTGGAACCTCATCTATCAACAGGCCACATCTATCCCAAATTTCTTTATATGGGAGCT
CGCCTGTGTAATTACCTGTCCCATCATCTGACAATTAGCCACAGAGTGGCAACTCCGCAATTGCTAC
TTCAAAGATGTCGGACTGAATATGAAGTTAAAGATCAAGCTGCAAAAGGGGATGAAGTTACTCGAAAACG
ATTTTCATGCATTTGACTCTTTCTGGGAGAACTTTATCTTAACCTGGAGATCAAGGGAACAAATGGACAG
GTTACAAGAGCAGATATTCTTCAGGTTGGTCTTCGAGAATTGCTGAATGCCCTGTTTTCTAATCCTATGG
ATGACAATTTAATTTGTGCAGTAAAATGTTAAAGTTGACAGGATCAGTTTTGGAAGATGCTTGGAAAGGA
AAAAGGAAAGATGGATATGGAAGAAATTATTCAGAGAATTGAAAACGTTGCTTAGATGCAAACTGCAGT
AGAGATGTAAAACAGATGCTCTTGAAGCTTGTAGAACTCCGGTCAAGTAAGTGGGCGAGATCCATGCAA
CTTCAACATATAGAGAAGCAACACCAGAAAATGATCCTAACTACTTTATGAATGAACCAACATTTTATAC
ATCTGATGGTGTCTTTCACTGCAGCTGATCCAGATTACCAAGAGAAAATACCAAGAATTTACTTGAAGA
GAGGACTTTTTTCCAGATTATGAAGAAAATGGAACAGATTTATCCGGGGCTGGTATCCATACTTGGATG
ATATTGATGATGAGATGGACCCAGAGATAGAAGAAGCTTATGAAAAGTTTTGTTTGGAAATCAGAGCGTAA
GCGAAAACAG

ACGCGTACGCGGCCGCTCGAGCAGAAACTCATCTCAGAAGAGGATCTGGCAGCAAATGATATCCTGGATT
ACAAGGATGACGACGATAAAGGTTTAA



[View online »](#)

Protein Sequence: >RC202735 protein sequence
Red=Cloning site Green=Tags(s)

MSDGFDRAPEQTRPLRAPSSQDKIPQQNSESAMAKPQVVVAPVLM SKLSVNAPEFYPSGYSSSYTESYE
 DGCEDYPTLSEYVQDFLNHLTEQPGSFETEIEQFAETLNGCVTTDDALQELVELIYQQATSIPNFSYMG
 RLCNYLSHHLTISPQSGNFRQLLLQRCRTEYEVKDQAAGDEVTRKRFHAFVFLGELYLNLEIKGTNGQ
 VTRADILQVGLRELLNALFSNPMDNLCIAVKLLKLTGSVLEDAWKEKGKMDMEEIIQRIENVVLDANCS
 RDVKQMLLKLVELRSSNWGRVHATSTYREATPENDPNYFMNEPTFYTSDGVPFTAADPDYQEKYQELLER
 EDFFPDYEENGTDL SGAGDPYLLDDIDDEMPEIEEAYEKFCLESERKRKQ

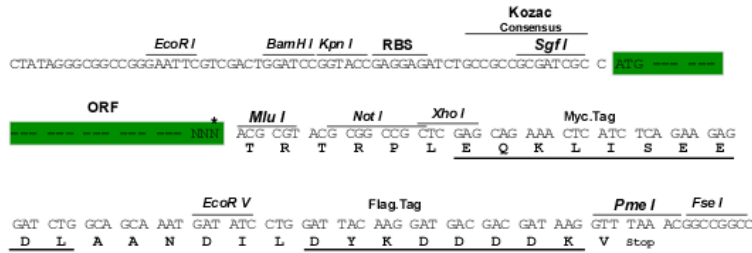
TRTRPLEQKLISEEDLAANDILDYKDDDDKV

Chromatograms: https://cdn.origene.com/chromatograms/mk6668_b05.zip

Restriction Sites: SgfI-MluI

Cloning Scheme:

Cloning sites used for ORF Shuttling:



* The last codon before the Stop codon of the ORF

ACCN: NM_182789

ORF Size: 1200 bp

OTI Disclaimer: The molecular sequence of this clone aligns with the gene accession number as a point of reference only. However, individual transcript sequences of the same gene can differ through naturally occurring variations (e.g. polymorphisms), each with its own valid existence. This clone is substantially in agreement with the reference, but a complete review of all prevailing variants is recommended prior to use. [More info](#)

OTI Annotation: This clone was engineered to express the complete ORF with an expression tag. Expression varies depending on the nature of the gene.

Components: The ORF clone is ion-exchange column purified and shipped in a 2D barcoded Matrix tube containing 10ug of transfection-ready, dried plasmid DNA (reconstitute with 100 ul of water).

Reconstitution Method:

1. Centrifuge at 5,000xg for 5min.
2. Carefully open the tube and add 100ul of sterile water to dissolve the DNA.
3. Close the tube and incubate for 10 minutes at room temperature.
4. Briefly vortex the tube and then do a quick spin (less than 5000xg) to concentrate the liquid at the bottom.
5. Store the suspended plasmid at -20°C. The DNA is stable for at least one year from date of shipping when stored at -20°C.

RefSeq: [NM_182789.3](#)

RefSeq Size: 2559 bp

RefSeq ORF: 1203 bp

Locus ID: 10605

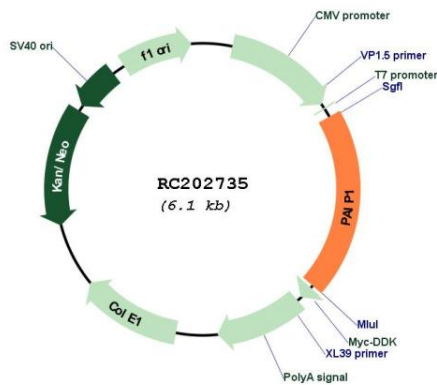
UniProt ID: [Q9H074](#)

Cytogenetics: 5p12

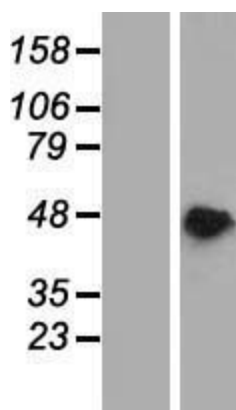
MW: 45.6 kDa

Gene Summary: The protein encoded by this gene interacts with poly(A)-binding protein and with the cap-binding complex eIF4A. It is involved in translational initiation and protein biosynthesis. Overexpression of this gene in COS7 cells stimulates translation. Alternative splicing occurs at this locus and three transcript variants encoding three distinct isoforms have been identified. [provided by RefSeq, Jul 2008]

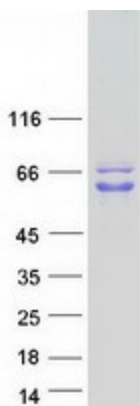
Product images:



Circular map for RC202735



Western blot validation of overexpression lysate (Cat# [LY405357]) using anti-DDK antibody (Cat# [TA50011-100]). Left: Cell lysates from untransfected HEK293T cells; Right: Cell lysates from HEK293T cells transfected with RC202735 using transfection reagent MegaTran 2.0 (Cat# [TT210002]).



Coomassie blue staining of purified PAIP1 protein (Cat# [TP302735]). The protein was produced from HEK293T cells transfected with PAIP1 cDNA clone (Cat# RC202735) using MegaTran 2.0 (Cat# [TT210002]).