

Product datasheet for **RC202732**

EEF1E1 (NM_004280) Human Tagged ORF Clone

Product data:

Product Type: Expression Plasmids
Product Name: EEF1E1 (NM_004280) Human Tagged ORF Clone
Tag: Myc-DDK
Symbol: EEF1E1
Synonyms: AIMP3; P18
Mammalian Cell Selection: Neomycin
Vector: pCMV6-Entry (PS100001)
E. coli Selection: Kanamycin (25 ug/mL)
ORF Nucleotide Sequence: >RC202732 representing NM_004280
Red=Cloning site Blue=ORF Green=Tags(s)

TTTTGTAATACGACTCACTATAGGGCGGCCGGAATTCGTCGACTGGATCCGGTACCGAGGAGATCTGCC
GCC**CGGATCGCC**

ATGGCGCGCGCCGACAGATTGTCGCTACTGGAGAAGTCCCTGGGACTGAGTAAGGGGAATAAATACAGTG
CTCAGGGCGAGCGACAGATTCCAGTTCTTCAGACAAACAATGGTCCAAGTCTAACAGGATTGACTACTAT
AGCAGCTCATCTAGTCAAGCAAGCCAACAAGAATATTTGCTGGGAGTACTGCAGAAGAAAAAGCAATC
GTTCAGCAGTGGTTAGAATACAGGGTCACTCAAGTAGTGGGCACTCCAGTAAAAATGACATCCACACAC
TGTTGAAGGATCTTAATTCATATCTTGAAGATAAAGTCTACCTTACAGGGTATACTTTACATTAGCAGA
TATACTATTGACTATGGACTTCATCGCTTATAGTTGACCTGACAGTTCAAGAAAAGGAGAAATATCTT
AATGTGTCTCGCTGGTTTTGTCACATTCAGCATTATCCAGGCATCAGGCAACATCTGTCTAGTGTGTCT
TCATCAAGAACAGACTATATACTAATCCAC

ACGCGTACGCGGCCGCTCGAGCAGAACTCATCTCAGAAGAGGATCTGGCAGCAAATGATATCCTGGATT
ACAAGGATGACGACGATAAGGTTTAA

Protein Sequence: >RC202732 representing NM_004280
Red=Cloning site Green=Tags(s)

MAAAAELSLLEKSLGLSKGNKYSAQGERQIPVLQTNNGPSLTGLTTIAAHLVKQANKEYLLGSTAEKAI
VQQWLEYRVTQVDGHSSKNDIHTLLKDLNSYLEDKVYLTGYNFTLADILLYYGLHRFIVDLTVQEKEYL
NVSRLFCHIQHYPGIRQHLSSVVFIGNRLYTNSH

TRTRPLEQKLISEEDLAANDILDYKDDDDKV

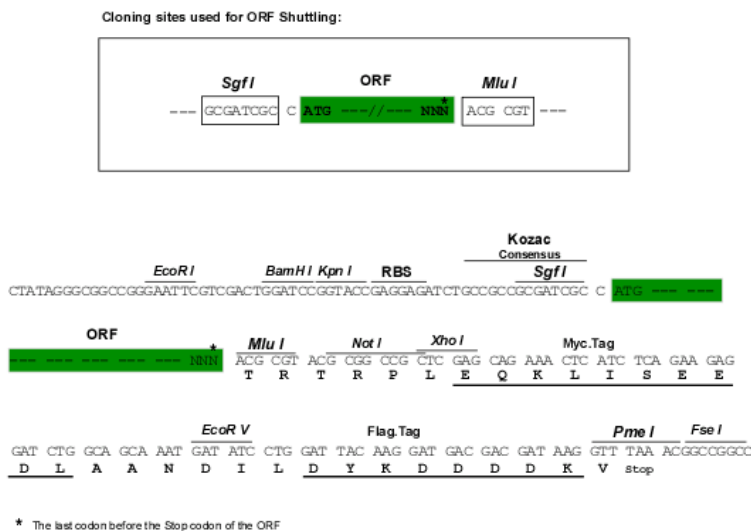
Chromatograms: https://cdn.origene.com/chromatograms/mg2997_b07.zip



[View online »](#)

Restriction Sites: SgfI-MluI

Cloning Scheme:



ACCN: NM_004280

ORF Size: 522 bp

OTI Disclaimer: The molecular sequence of this clone aligns with the gene accession number as a point of reference only. However, individual transcript sequences of the same gene can differ through naturally occurring variations (e.g. polymorphisms), each with its own valid existence. This clone is substantially in agreement with the reference, but a complete review of all prevailing variants is recommended prior to use. [More info](#)

OTI Annotation: This clone was engineered to express the complete ORF with an expression tag. Expression varies depending on the nature of the gene.

Components: The ORF clone is ion-exchange column purified and shipped in a 2D barcoded Matrix tube containing 10ug of transfection-ready, dried plasmid DNA (reconstitute with 100 ul of water).

Reconstitution Method:

1. Centrifuge at 5,000xg for 5min.
2. Carefully open the tube and add 100ul of sterile water to dissolve the DNA.
3. Close the tube and incubate for 10 minutes at room temperature.
4. Briefly vortex the tube and then do a quick spin (less than 5000xg) to concentrate the liquid at the bottom.
5. Store the suspended plasmid at -20°C. The DNA is stable for at least one year from date of shipping when stored at -20°C.

RefSeq: [NM_004280.5](#)

RefSeq Size: 1067 bp

RefSeq ORF: 525 bp

Locus ID: 9521

UniProt ID: [O43324](#)

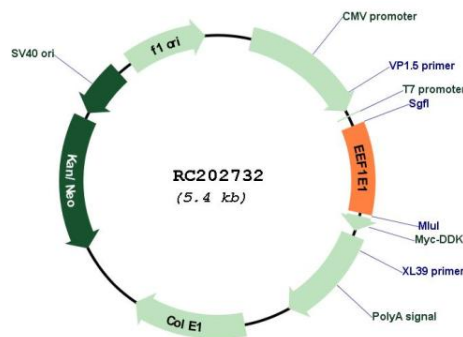
Cytogenetics: 6p24.3

Protein Families: Druggable Genome

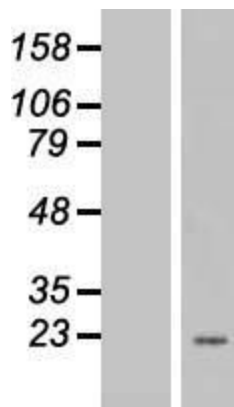
MW: 19.6 kDa

Gene Summary: This gene encodes a multifunctional protein that localizes to both the cytoplasm and nucleus. In the cytoplasm, the encoded protein is an auxiliary component of the macromolecular aminoacyl-tRNA synthase complex. However, its mouse homolog has been shown to translocate to the nucleus in response to DNA damage, and it plays a positive role in ATM/ATR-mediated p53 activation. Alternative splicing results in multiple transcript variants. Read-through transcription also exists between this gene and the neighboring downstream MUTED (muted homolog) gene. An EEF1E1-related pseudogene has been identified on chromosome 2. [provided by RefSeq, Dec 2010]

Product images:



Circular map for RC202732



Western blot validation of overexpression lysate (Cat# [LY418096]) using anti-DDK antibody (Cat# [TA50011-100]). Left: Cell lysates from untransfected HEK293T cells; Right: Cell lysates from HEK293T cells transfected with RC202732 using transfection reagent MegaTran 2.0 (Cat# [TT210002]).