

## Product datasheet for RC202724

### ADTRP (NM\_032744) Human Tagged ORF Clone

#### Product data:

Product Type:	Expression Plasmids
Product Name:	ADTRP (NM_032744) Human Tagged ORF Clone
Tag:	Myc-DDK
Symbol:	ADTRP
Synonyms:	ALG1L; C6orf105; dJ413H6.1
Mammalian Cell Selection:	Neomycin
Vector:	pCMV6-Entry (PS100001)
E. coli Selection:	Kanamycin (25 ug/mL)
ORF Nucleotide Sequence:	>RC202724 representing NM_032744 Red=Cloning site Blue=ORF Green=Tags(s)

TTTTGTAATACGACTCACTATAGGGCGGCCGGAATTCGTCGACTGGATCCGGTACCGAGGAGATCTGCC  
 GCCCGCATCGCC

ATGACGAAGACTTCTACATGCATATACCACTTCCTTGTCTGAGCTGGTATACTTTCCTCAATTATTACA  
 TCTCACAGGAAGGAAAAGACGAGGTGAAACCCAAAATCTTGGCAAATGGTGCAAGGTGGAATATATGAC  
 GCTGCTTAATCTGCTCTTGCAGACCATTTCTACGGGGTCACCTGCCTGGATGATGTGCTGAAAAGAACC  
 AAAGGGGAAAAGACATTAAGTTCCTAACTGCCTTCAGAGACCTGCTTTTCACCACTCTGGCTTTTCCTG  
 TATCCACGTTTGTATTTTGGCATTCTGGATCCTTTCTCTACAATCGAGATCTCATTTACCCCAAGGT  
 CCTAGATACTGTGATCCCGTGTGGCTGAATCATGCAATGCACACTTTTCATATTTCCCATCACATTGGCT  
 GAAGTCGTCCTCAGGCCTCACTCTATCCATCAAAGAAGACAGGACTCACCTTGCTGGCTGCTGCCAGCA  
 TTGCTTACATCAGCCGCATCCTATGGCTCTACTTTGAGACGGGTACCTGGGTGTATCCTGTGTTTGCCAA  
 ACTCAGCCTCTTGGGTCTAGCAGCTTTCTTCTCTCAGCTACGTCTTCATCGCCAGCATCTACCTACTT  
 GGAGAGAAGCTCAACCACTGGAATGGGGTGACATGAGGCAGCCACGGAAGAAGAGGAAG

ACGCGTACGCGGCCGCTCGAGCAGAACTCATCTCAGAAGAGGATCTGGCAGCAAATGATATCCTGGATT  
 ACAAGGATGACGACGATAAGGTTTAA


[View online »](#)

**Protein Sequence:** >RC202724 representing NM\_032744  
 Red=Cloning site Green=Tags(s)

MTKTSTCIYHFLVLSWYTFNLNYYISQEGKDEVKPKILANGARWKYMTLLNLLQTIFYGVTCLDDVLKRT  
 KGGKDIKFLTAFRDLLFTLAFPVSTFVFLAFWILFLYNRLIYPKVLDTVIPVWLNHAMHTFIFPITLA  
 EVVLRPHSYPSKKTGLTLLAAASIAYISRILWL YFETGTWVYPVFAKLSLLGLAAFFSLSYVFIASIYLL  
 GEKLNHWKWGDMRQPRKKRK

TRTRPLEQKLISEEDLAANDILDYKDDDDKV

**Chromatograms:** [https://cdn.origene.com/chromatograms/mg2930\\_c07.zip](https://cdn.origene.com/chromatograms/mg2930_c07.zip)

**Restriction Sites:** SgfI-MluI

**Cloning Scheme:**



**ACCN:** NM\_032744

**ORF Size:** 690 bp

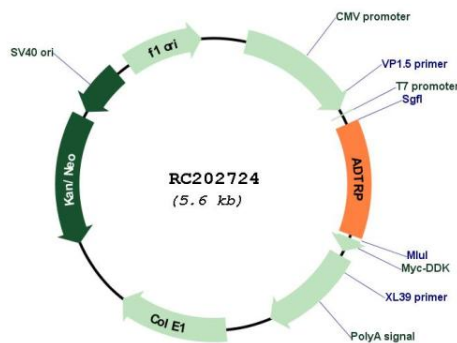
**OTI Disclaimer:** Due to the inherent nature of this plasmid, standard methods to replicate additional amounts of DNA in E. coli are highly likely to result in mutations and/or rearrangements. Therefore, OriGene does not guarantee the capability to replicate this plasmid DNA. Additional amounts of DNA can be purchased from OriGene with batch-specific, full-sequence verification at a reduced cost. Please contact our customer care team at [custsupport@origene.com](mailto:custsupport@origene.com) or by calling 301.340.3188 option 3 for pricing and delivery.

The molecular sequence of this clone aligns with the gene accession number as a point of reference only. However, individual transcript sequences of the same gene can differ through naturally occurring variations (e.g. polymorphisms), each with its own valid existence. This clone is substantially in agreement with the reference, but a complete review of all prevailing variants is recommended prior to use. [More info](#)

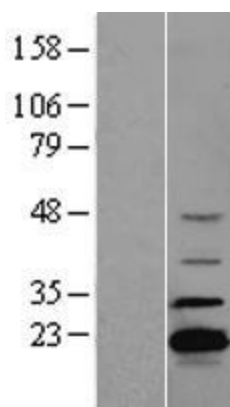
**OTI Annotation:** This clone was engineered to express the complete ORF with an expression tag. Expression varies depending on the nature of the gene.

<b>Components:</b>	The ORF clone is ion-exchange column purified and shipped in a 2D barcoded Matrix tube containing 10ug of transfection-ready, dried plasmid DNA (reconstitute with 100 ul of water).
<b>Reconstitution Method:</b>	<ol style="list-style-type: none"> <li>1. Centrifuge at 5,000xg for 5min.</li> <li>2. Carefully open the tube and add 100ul of sterile water to dissolve the DNA.</li> <li>3. Close the tube and incubate for 10 minutes at room temperature.</li> <li>4. Briefly vortex the tube and then do a quick spin (less than 5000xg) to concentrate the liquid at the bottom.</li> <li>5. Store the suspended plasmid at -20°C. The DNA is stable for at least one year from date of shipping when stored at -20°C.</li> </ol>
<b>Note:</b>	Plasmids are not sterile. For experiments where strict sterility is required, filtration with 0.22um filter is required.
<b>RefSeq:</b>	<a href="#">NM_032744.4</a>
<b>RefSeq Size:</b>	1602 bp
<b>RefSeq ORF:</b>	693 bp
<b>Locus ID:</b>	84830
<b>UniProt ID:</b>	<a href="#">Q96IZ2</a>
<b>Cytogenetics:</b>	6p24.1
<b>Protein Families:</b>	Transmembrane
<b>MW:</b>	26.7 kDa
<b>Gene Summary:</b>	Regulates the expression and the cell-associated anticoagulant activity of the inhibitor TFPI in endothelial cells (in vitro).[UniProtKB/Swiss-Prot Function]

## Product images:



Circular map for RC202724



Western blot validation of overexpression lysate (Cat# [LY409956]) using anti-DDK antibody (Cat# [TA50011-100]). Left: Cell lysates from untransfected HEK293T cells; Right: Cell lysates from HEK293T cells transfected with RC202724 using transfection reagent MegaTran 2.0 (Cat# [TT210002]).