

## Product datasheet for **RC202723**

### Apolipoprotein A II (APOA2) (NM\_001643) Human Tagged ORF Clone

#### Product data:

**Product Type:** Expression Plasmids  
**Product Name:** Apolipoprotein A II (APOA2) (NM\_001643) Human Tagged ORF Clone  
**Tag:** Myc-DDK  
**Symbol:** Apolipoprotein A II  
**Synonyms:** Apo-AII; ApoA-II; apoAll  
**Mammalian Cell Selection:** Neomycin  
**Vector:** pCMV6-Entry (PS100001)  
**E. coli Selection:** Kanamycin (25 ug/mL)  
**ORF Nucleotide Sequence:** >RC202723 ORF sequence  
**Red=Cloning site Blue=ORF Green=Tags(s)**

TTTTGTAATACGACTCACTATAGGGCGGCCGGAATTCGTCGACTGGATCCGGTACCGAGGAGATCTGCC  
GCC**CGATCGCC**

ATGAAGCTGCTCGCAGCAACTGTGCTACTCCTCACCATCTGCAGCCTGAAGGAGCTTTGGTTCGGAGAC  
AGGCAAAGGAGCCATGTGTGGAGAGCCTGGTTTCTCAGTACTTCCAGACCGTGACTGACTATGGCAAGGA  
CCTGATGGAGAAGGTCAAGAGCCCAGAGCTTCAGGCCGAGCCAAGTCTTACTTTGAAAAGTCAAAGGAG  
CAGCTGACACCCCTGATCAAGAAGGCTGGAACGGAAGTGGTAACTTCTTGAGCTATTCGTGGAAGTTG  
GAACACAGCCTGCCACCCAG

**ACGCGT**ACGCGGCCGCTCGAGCAGAACTCATCTCAGAAGAGGATCTGGCAGCAAATGATATCCTGGATT  
ACAAGGATGACGACGATAAGGTTTAA

**Protein Sequence:** >RC202723 protein sequence  
**Red=Cloning site Green=Tags(s)**  
MKLLAATVLLLTICSLEGALVRRQAKEPCVESLVSQYFQTVTDYGKDLMEKVKSPELQAEAKSYFEKSKE  
QLTPLIKKAGTELVNFLSYFVELGTQPATQ

**TR**TRPLEQKLISEEDLAANDILDYKDDDDKV

**Chromatograms:** [https://cdn.origene.com/chromatograms/mk6050\\_c11.zip](https://cdn.origene.com/chromatograms/mk6050_c11.zip)

**Restriction Sites:** SgfI-MluI



[View online »](#)

**Cloning Scheme:**


**ACCN:** NM\_001643

**ORF Size:** 300 bp

**OTI Disclaimer:** The molecular sequence of this clone aligns with the gene accession number as a point of reference only. However, individual transcript sequences of the same gene can differ through naturally occurring variations (e.g. polymorphisms), each with its own valid existence. This clone is substantially in agreement with the reference, but a complete review of all prevailing variants is recommended prior to use. [More info](#)

**OTI Annotation:** This clone was engineered to express the complete ORF with an expression tag. Expression varies depending on the nature of the gene.

**Components:** The ORF clone is ion-exchange column purified and shipped in a 2D barcoded Matrix tube containing 10ug of transfection-ready, dried plasmid DNA (reconstitute with 100 ul of water).

- Reconstitution Method:**
1. Centrifuge at 5,000xg for 5min.
  2. Carefully open the tube and add 100ul of sterile water to dissolve the DNA.
  3. Close the tube and incubate for 10 minutes at room temperature.
  4. Briefly vortex the tube and then do a quick spin (less than 5000xg) to concentrate the liquid at the bottom.
  5. Store the suspended plasmid at -20°C. The DNA is stable for at least one year from date of shipping when stored at -20°C.

**RefSeq:** [NM\\_001643.2](#)

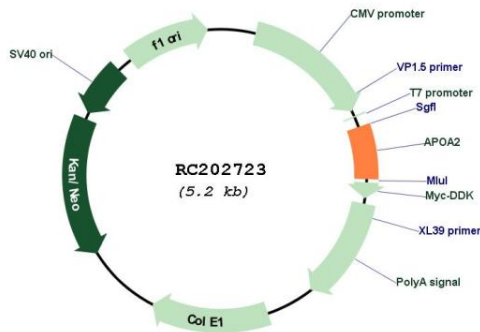
**RefSeq Size:** 473 bp

**RefSeq ORF:** 303 bp

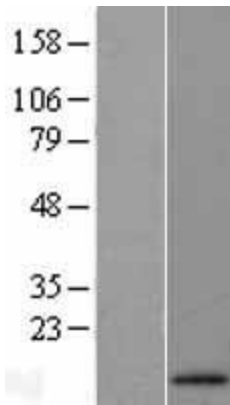
**Locus ID:** 336

**UniProt ID:** [P02652](#)  
**Cytogenetics:** 1q23.3  
**Domains:** ApoA-II, Radial\_spoke  
**Protein Families:** Druggable Genome, Secreted Protein  
**Protein Pathways:** PPAR signaling pathway  
**MW:** 11.2 kDa  
**Gene Summary:** This gene encodes apolipoprotein (apo-) A-II, which is the second most abundant protein of the high density lipoprotein particles. The protein is found in plasma as a monomer, homodimer, or heterodimer with apolipoprotein D. Defects in this gene may result in apolipoprotein A-II deficiency or hypercholesterolemia. [provided by RefSeq, Jul 2008]

### Product images:



Circular map for RC202723



Western blot validation of overexpression lysate (Cat# [LY400619]) using anti-DDK antibody (Cat# [TA50011-100]). Left: Cell lysates from untransfected HEK293T cells; Right: Cell lysates from HEK293T cells transfected with RC202723 using transfection reagent MegaTran 2.0 (Cat# [TT210002]).