

Product datasheet for RC202721

Creatine kinase M type (CKM) (NM_001824) Human Tagged ORF Clone

Product data:

Product Type:	Expression Plasmids
Product Name:	Creatine kinase M type (CKM) (NM_001824) Human Tagged ORF Clone
Tag:	Myc-DDK
Symbol:	Creatine kinase M type
Synonyms:	CKMM; CPK-M; M-CK
Mammalian Cell Selection:	Neomycin
Vector:	pCMV6-Entry (PS100001)
E. coli Selection:	Kanamycin (25 ug/mL)
ORF Nucleotide Sequence:	>RC202721 ORF sequence Red=Cloning site Blue=ORF Green=Tags(s)

TTTTGTAATACGACTCACTATAGGGCGCCGGGAATTCGTCGACTGGATCCGGTACCGAGGAGATCTGCC
GCC**CGATCGCC**

ATGCCATTCGGTAACACCCACAACAAGTTCAGCTGAATTACAAGCCTGAGGAGGAGTACCCCGACCTCA
GCAAACATAACAACCACATGGCCAAGGTACTGACCCTTGAAGTCTACAAGAAGCTGCGGGACAAGGAGAC
TCCATCTGGCTTCACTGTAGACGATGTCATCCAGACAGGAGTGGACAACCCAGGTCACCCCTTCATCATG
ACCGTGGGCTGCGTGGCTGGTGTGAGGAGTCTACGAAGTTTTCAAGGAAGTCTTTGACCCCATCATCT
CGGATCGCCACGGGGCTACAAACCCACTGACAAGCACAAGACTGACCTCAACCATGAAAACCTCAAGGG
TGGAGACGACCTGGACCCCAACTACGTGCTCAGCAGCCGCTCCGCACTGGCCGCAGCATCAAGGGCTAC
ACGTTGCCCCCACTGCTCCCGTGGCGAGCGCCGGGCGGTGGAGAAGCTCTCTGTGGAAGCTCTCAACA
GCCTGACGGGCGAGTTCAAAGGGGAAGTACTACCCTCTGAAGAGCATGACGGAGAAGGAGCAGCAGCAGCT
CATCGATGACCACTTCTGTTCGACAAGCCCGTGTCCCGCTGCTGCTGGCCTCAGGCATGGCCCGCGAC
TGGCCCGACGCCCGTGGCATCTGGCACAATGACAACAAGAGCCTCCTGGTGTGGGTGAACGAGGAGGATC
ACCTCCGGGTCACTCCATGGAGAAGGGGGCAACATGAAGGAGGTTTTCCGCCGCTTCTGCGTAGGGCT
GCAGAAGATTGAGGAGATCTTTAAGAAAGCTGGCCACCCCTTCATGTGGAACAGCACCTGGGCTACGTG
CTCACCTGCCATCCAACCTGGCACTGGGCTGCGTGGAGCGTGCATGTGAAGTGGCGCACCTGAGCA
AGCACCCCAAGTTCGAGGAGATCCTCACCCGCTGCGTCTGCAGAAGAGGGGTACAGGTGGCGTGGACAC
AGCTGCCGTGGGCTCAGTATTTGACGTGTCCAACGCTGATCGGCTGGGCTCGTCCGAAGTAGAACAGGTG
CAGCTGGTGGTGGATGGTGTGAAGCTCATGGTGGAAATGGAGAAGAAGTTGGAGAAGGCCAGTCCATCG
ACGACATGATCCCGCCAGAAG

ACGCGTACGCGGCCGCTCGAGCAGAAAACCTCATCTCAGAAGAGGATCTGGCAGCAATGATATCCTGGATT
ACAAGGATGACGACGATAAGGTTTAA



[View online >](#)

Reconstitution Method:

1. Centrifuge at 5,000xg for 5min.
2. Carefully open the tube and add 100ul of sterile water to dissolve the DNA.
3. Close the tube and incubate for 10 minutes at room temperature.
4. Briefly vortex the tube and then do a quick spin (less than 5000xg) to concentrate the liquid at the bottom.
5. Store the suspended plasmid at -20°C. The DNA is stable for at least one year from date of shipping when stored at -20°C.

RefSeq: [NM_001824.5](#)

RefSeq Size: 1666 bp

RefSeq ORF: 1146 bp

Locus ID: 1158

UniProt ID: [P06732](#)

Cytogenetics: 19q13.32

Domains: ATP-gua_Ptrans

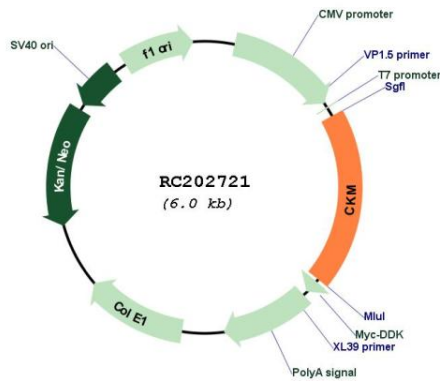
Protein Families: Druggable Genome

Protein Pathways: Arginine and proline metabolism, Metabolic pathways

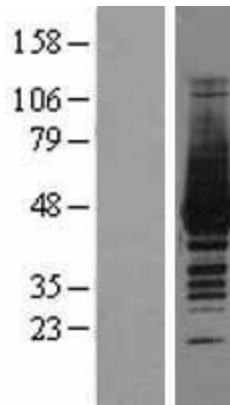
MW: 43.1 kDa

Gene Summary: The protein encoded by this gene is a cytoplasmic enzyme involved in energy homeostasis and is an important serum marker for myocardial infarction. The encoded protein reversibly catalyzes the transfer of phosphate between ATP and various phosphogens such as creatine phosphate. It acts as a homodimer in striated muscle as well as in other tissues, and as a heterodimer with a similar brain isozyme in heart. The encoded protein is a member of the ATP:guanido phosphotransferase protein family. [provided by RefSeq, Jul 2008]

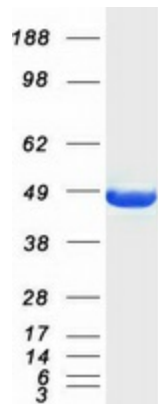
Product images:



Circular map for RC202721



Western blot validation of overexpression lysate (Cat# [LY400690]) using anti-DDK antibody (Cat# [TA50011-100]). Left: Cell lysates from untransfected HEK293T cells; Right: Cell lysates from HEK293T cells transfected with RC202721 using transfection reagent MegaTran 2.0 (Cat# [TT210002]).



Coomassie blue staining of purified CKM protein (Cat# [TP302721]). The protein was produced from HEK293T cells transfected with CKM cDNA clone (Cat# RC202721) using MegaTran 2.0 (Cat# [TT210002]).