

Product datasheet for **RC202718L1V**

Alpha B Crystallin (CRYAB) (NM_001885) Human Tagged ORF Clone Lentiviral Particle

Product data:

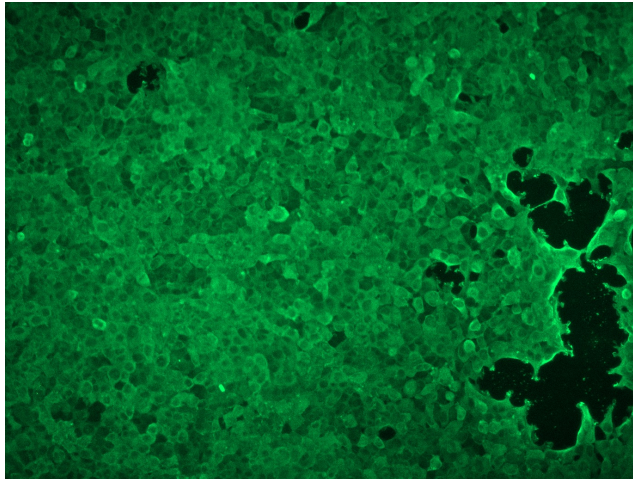
Product Type:	Lentiviral Particles
Product Name:	Alpha B Crystallin (CRYAB) (NM_001885) Human Tagged ORF Clone Lentiviral Particle
Symbol:	Alpha B Crystallin
Synonyms:	CMD1I1; CRYA2; CTPP2; CTRCT16; HEL-S-101; HSPB5; MFM2
Mammalian Cell Selection:	None
Vector:	pLenti-C-Myc-DDK (PS100064)
Tag:	Myc-DDK
ACCN:	NM_001885
ORF Size:	525 bp
ORF Nucleotide Sequence:	The ORF insert of this clone is exactly the same as(RC202718).
OTI Disclaimer:	The molecular sequence of this clone aligns with the gene accession number as a point of reference only. However, individual transcript sequences of the same gene can differ through naturally occurring variations (e.g. polymorphisms), each with its own valid existence. This clone is substantially in agreement with the reference, but a complete review of all prevailing variants is recommended prior to use. More info
OTI Annotation:	This clone was engineered to express the complete ORF with an expression tag. Expression varies depending on the nature of the gene.
RefSeq:	NM_001885.1
RefSeq Size:	998 bp
RefSeq ORF:	528 bp
Locus ID:	1410
UniProt ID:	P02511
Cytogenetics:	11q23.1
Domains:	HSP20, crystallin
MW:	20.2 kDa


[View online »](#)

Gene Summary:

Mammalian lens crystallins are divided into alpha, beta, and gamma families. Alpha crystallins are composed of two gene products: alpha-A and alpha-B, for acidic and basic, respectively. Alpha crystallins can be induced by heat shock and are members of the small heat shock protein (HSP20) family. They act as molecular chaperones although they do not renature proteins and release them in the fashion of a true chaperone; instead they hold them in large soluble aggregates. These heterogeneous aggregates consist of 30-40 subunits; the alpha-A and alpha-B subunits have a 3:1 ratio, respectively. Two additional functions of alpha crystallins are an autokinase activity and participation in the intracellular architecture. The encoded protein has been identified as a moonlighting protein based on its ability to perform mechanistically distinct functions. Alpha-A and alpha-B gene products are differentially expressed; alpha-A is preferentially restricted to the lens and alpha-B is expressed widely in many tissues and organs. Elevated expression of alpha-B crystallin occurs in many neurological diseases; a missense mutation cosegregated in a family with a desmin-related myopathy. Alternative splicing results in multiple transcript variants. [provided by RefSeq, Jan 2019]

Product images:



[RC202718L1] was used to prepare Lentiviral particles using [TR30037] packaging kit. HEK293T cells were transduced with RC202718L1V particle to overexpress human CRYAB-Myc-DDK fusion protein.