

Product datasheet for **RC202717**

GLP1 (GCG) (NM_002054) Human Tagged ORF Clone

Product data:

Product Type: Expression Plasmids
Product Name: GLP1 (GCG) (NM_002054) Human Tagged ORF Clone
Tag: Myc-DDK
Symbol: GLP1
Synonyms: GLP-1; GLP1; GLP2; GRPP
Mammalian Cell Selection: Neomycin
Vector: pCMV6-Entry (PS100001)
E. coli Selection: Kanamycin (25 ug/mL)
ORF Nucleotide Sequence: >RC202717 ORF sequence
Red=Cloning site Blue=ORF Green=Tags(s)

TTTTGTAATACGACTCACTATAGGGCGCCGGGAATTCGTCGACTGGATCCGGTACCGAGGAGATCTGCC
GCC**GCGATCGCC**

ATGAAAAGCATTACTTTGTGGCTGGATTATTTGTAATGCTGGTACAAGGCAGCTGGCAACGTTCCCTTC
AAGACACAGAGGAGAAATCCAGATCATTCTCAGCTTCCCAGGCAGACCCACTCAGTGATCCTGATCAGAT
GAACGAGGACAAGCGCCATTACAGGGCACATTCACCAGTGACTACAGCAAGTATCTGGACTCCAGGCGT
GCCAAGATTTGTGCAGTGGTTGATGAATACCAAGAGGAACAGGAATAACATTGCCAAACGTCACGATG
AATTTGAGAGACATGCTGAAGGGACCTTACCAGTGATGTAAGTCTTATTTGGAAGCCAAGCTGCCAA
GGAATTCATTGCTTGGCTGGTCAAAGGCCGAGGAAGGCGAGATTTCCAGAAAGAGGTCGCCATTGTTGAA
GAACTTGGCCGACAGATGCTGATGGTTCTTCTCTGATGAGATGAACACCATTCTTGATAATCTTGCCG
CCAGGGACTTTATAAACTGGTTGATTCAGACAAAATCACTGACAGGAAA

ACGCGTACGCGGCCGCTCGAGCAGAACTCATCTCAGAAGAGGATCTGGCAGCAAATGATATCCTGGATT
ACAAGGATGACGACGATAAGGTTTAA

Protein Sequence: >RC202717 protein sequence
Red=Cloning site Green=Tags(s)

MKSIYFVAGLVFVMLVQGSWQRSLQDTEEKSRFSASQADPLSDPDQMNEKDRHSQGTFTSDYSKYLDSRR
AQDFVQWLMNTRNRNRIAKRHDEFERHAEGFTSDVSSYLEGQAAKEFIAWLVKGRGRDFPEEVAIVE
ELGRRHADGSFSDMNTILDNLAAARDFINWLIQTKITDRK

TRTRPLEQKLISEEDLAANDILDYKDDDDKV

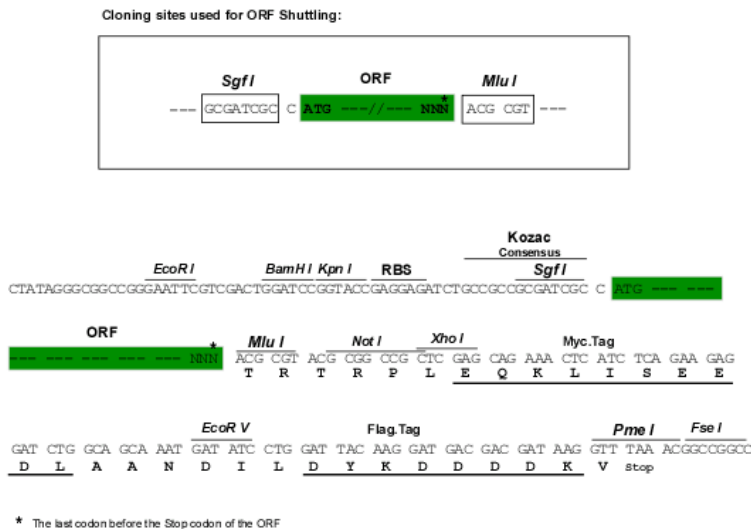
Chromatograms: https://cdn.origene.com/chromatograms/mk6241_c05.zip



[View online »](#)

Restriction Sites: SgfI-MluI

Cloning Scheme:



ACCN: NM_002054

ORF Size: 540 bp

OTI Disclaimer: The molecular sequence of this clone aligns with the gene accession number as a point of reference only. However, individual transcript sequences of the same gene can differ through naturally occurring variations (e.g. polymorphisms), each with its own valid existence. This clone is substantially in agreement with the reference, but a complete review of all prevailing variants is recommended prior to use. [More info](#)

OTI Annotation: This clone was engineered to express the complete ORF with an expression tag. Expression varies depending on the nature of the gene.

Components: The ORF clone is ion-exchange column purified and shipped in a 2D barcoded Matrix tube containing 10ug of transfection-ready, dried plasmid DNA (reconstitute with 100 ul of water).

Reconstitution Method:

1. Centrifuge at 5,000xg for 5min.
2. Carefully open the tube and add 100ul of sterile water to dissolve the DNA.
3. Close the tube and incubate for 10 minutes at room temperature.
4. Briefly vortex the tube and then do a quick spin (less than 5000xg) to concentrate the liquid at the bottom.
5. Store the suspended plasmid at -20°C. The DNA is stable for at least one year from date of shipping when stored at -20°C.

RefSeq: [NM_002054.5](#)

RefSeq Size: 1294 bp

RefSeq ORF: 543 bp

Locus ID: 2641

UniProt ID: [P01275](#)

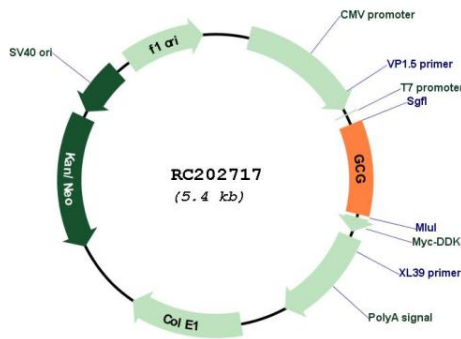
Cytogenetics: 2q24.2

Protein Families: Druggable Genome, ES Cell Differentiation/IPS, Secreted Protein

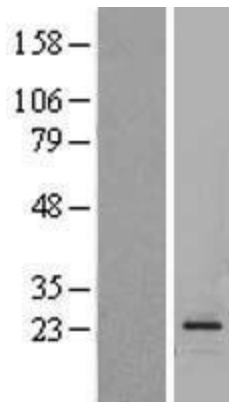
MW: 20.9 kDa

Gene Summary: The protein encoded by this gene is actually a preproprotein that is cleaved into four distinct mature peptides. One of these, glucagon, is a pancreatic hormone that counteracts the glucose-lowering action of insulin by stimulating glycogenolysis and gluconeogenesis. Glucagon is a ligand for a specific G-protein linked receptor whose signalling pathway controls cell proliferation. Two of the other peptides are secreted from gut endocrine cells and promote nutrient absorption through distinct mechanisms. Finally, the fourth peptide is similar to glicentin, an active enteroglucagon. [provided by RefSeq, Jul 2008]

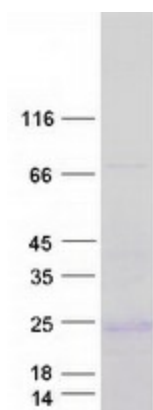
Product images:



Circular map for RC202717



Western blot validation of overexpression lysate (Cat# [LY419562]) using anti-DDK antibody (Cat# [TA50011-100]). Left: Cell lysates from untransfected HEK293T cells; Right: Cell lysates from HEK293T cells transfected with RC202717 using transfection reagent MegaTran 2.0 (Cat# [TT210002]).



Coomassie blue staining of purified GCG protein (Cat# [TP302717]). The protein was produced from HEK293T cells transfected with GCG cDNA clone (Cat# RC202717) using MegaTran 2.0 (Cat# [TT210002]).