

Product datasheet for RC202716

IL18 (NM_001562) Human Tagged ORF Clone

Product data:

Product Type: Expression Plasmids
Product Name: IL18 (NM_001562) Human Tagged ORF Clone
Tag: Myc-DDK
Symbol: IL18
Synonyms: IGIF; IL-1g; IL-18; IL1F4
Mammalian Cell Selection: Neomycin
Vector: pCMV6-Entry (PS100001)
E. coli Selection: Kanamycin (25 ug/mL)
ORF Nucleotide Sequence: >RC202716 ORF sequence
 Red=Cloning site Blue=ORF Green=Tags(s)

TTTTGTAATACGACTCACTATAGGGCGGCCGGAATTCGTCGACTGGATCCGGTACCGAGGAGATCTGCC
 GCC**CGATCGCC**

ATGGCTGCTGAACCAGTAGAAGACAATTGCATCAACTTTGTGGCAATGAAATTTATTGACAATACGCTTT
 ACTTTATAGCTGAAGATGATGAAAACCTGGAATCCGATTACTTTGGCAAGCTTGAATCTAAATTATCAGT
 CATAAGAAATTTGAATGACCAAGTTCTCTTCATTGACCAAGGAAATCGGCCTCTATTTGAAGATATGACT
 GATTCTGACTGTAGAGATAATGCACCCCGACCATATTTATTATAAGTATGTATAAAGATAGCCAGCCTA
 GAGGTATGGCTGTAACATCTCTGTGAAGTGTGAGAAAATTTCAACTCTCTCTGTGAGAACAAAATTAT
 TTCCTTTAAGGAAATGAATCCTCTGATAACATCAAGGATACAAAAGTGACATCATATTCTTTAGAGA
 AGTGTCCCAGGACATGATAATAAGATGCAATTTGAATCTTCATCATACGAAGGACTTTCTAGCTTGTG
 AAAAAGAGAGAGACCTTTTAAACTCATTTGAAAAAAGAGGATGAATGGGGGATAGATCTATAATGTT
 CACTGTTCAAAACGAAGAC

ACGCGTACGCGGCCGCTCGAGCAGAAACTCATCTCAGAAGAGGATCTGGCAGCAATGATATCCTGGATT
 ACAAGGATGACGACGATAAGGTTTAA

Protein Sequence: >RC202716 protein sequence
 Red=Cloning site Green=Tags(s)

MAAEPVEDNCINFMKFDNTLYFIAEDDENLESDFGKLESKLSVIRNLNDQVLFIDQGNRPLFEDMT
 DSDCRDNAPRTIFIISMYKDSQPRGMAVTISVKCEKISTLSCENKIISFKEMNPPDNIKDTKSDIIFQF
 SVPGHDNKMQFESSYEGYFLACEKERDLFKLILKKEDELGDRSIMFTVQNE

TRTRPLEQKLISEEDLAANDILDYKDDDDKV



[View online »](#)

Chromatograms: https://cdn.origene.com/chromatograms/mk6079_e08.zip

Restriction Sites: SgfI-MluI

Cloning Scheme:



ACCN: NM_001562

ORF Size: 579 bp

OTI Disclaimer: The molecular sequence of this clone aligns with the gene accession number as a point of reference only. However, individual transcript sequences of the same gene can differ through naturally occurring variations (e.g. polymorphisms), each with its own valid existence. This clone is substantially in agreement with the reference, but a complete review of all prevailing variants is recommended prior to use. [More info](#)

OTI Annotation: This clone was engineered to express the complete ORF with an expression tag. Expression varies depending on the nature of the gene.

Components: The ORF clone is ion-exchange column purified and shipped in a 2D barcoded Matrix tube containing 10ug of transfection-ready, dried plasmid DNA (reconstitute with 100 ul of water).

Reconstitution Method:

1. Centrifuge at 5,000xg for 5min.
2. Carefully open the tube and add 100ul of sterile water to dissolve the DNA.
3. Close the tube and incubate for 10 minutes at room temperature.
4. Briefly vortex the tube and then do a quick spin (less than 5000xg) to concentrate the liquid at the bottom.
5. Store the suspended plasmid at -20°C. The DNA is stable for at least one year from date of shipping when stored at -20°C.

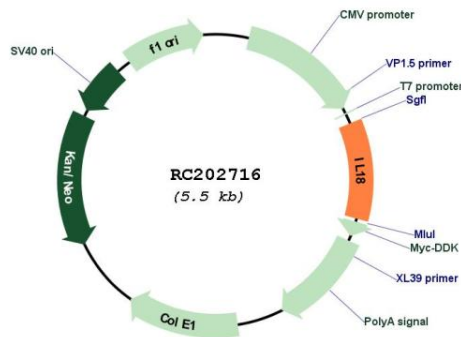
Note: Plasmids are not sterile. For experiments where strict sterility is required, filtration with 0.22um filter is required.

RefSeq: [NM_001562.4](#)

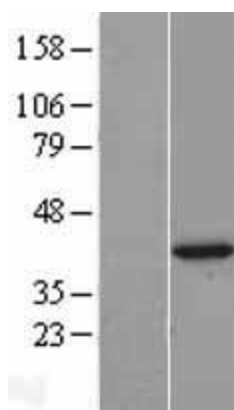
RefSeq Size: 1163 bp

RefSeq ORF:	582 bp
Locus ID:	3606
UniProt ID:	Q14116
Cytogenetics:	11q23.1
Protein Families:	Druggable Genome, Secreted Protein
Protein Pathways:	Cytokine-cytokine receptor interaction, Cytosolic DNA-sensing pathway, NOD-like receptor signaling pathway
MW:	22.3 kDa
Gene Summary:	The protein encoded by this gene is a proinflammatory cytokine of the IL-1 family that is constitutively found as a precursor within the cytoplasm of a variety of cells including macrophages and keratinocytes. The inactive IL-18 precursor is processed to its active form by caspase-1, and is capable of stimulating interferon gamma production, and of regulating both T helper (Th) 1 and Th2 responses. This cytokine has been implicated in the injury of different organs, and in potentially fatal conditions characterized by a cytokine storm. In humans, IL-18 gene is located on chromosome 11. Alternatively spliced transcript variants encoding different isoforms have been found for this gene.[provided by RefSeq, Aug 2020]

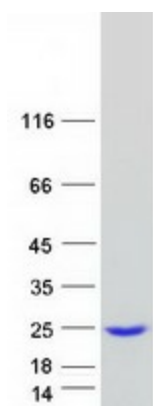
Product images:



Circular map for RC202716



Western blot validation of overexpression lysate (Cat# [LY400599]) using anti-DDK antibody (Cat# [TA50011-100]). Left: Cell lysates from untransfected HEK293T cells; Right: Cell lysates from HEK293T cells transfected with RC202716 using transfection reagent MegaTran 2.0 (Cat# [TT210002]).



Coomassie blue staining of purified IL18 protein (Cat# [TP302716]). The protein was produced from HEK293T cells transfected with IL18 cDNA clone (Cat# RC202716) using MegaTran 2.0 (Cat# [TT210002]).