

Product datasheet for **RC202707**

CXCL5 (NM_002994) Human Tagged ORF Clone

Product data:

Product Type: Expression Plasmids
Product Name: CXCL5 (NM_002994) Human Tagged ORF Clone
Tag: Myc-DDK
Symbol: CXCL5
Synonyms: ENA-78; SCYB5
Mammalian Cell Selection: Neomycin
Vector: pCMV6-Entry (PS100001)
E. coli Selection: Kanamycin (25 ug/mL)
ORF Nucleotide Sequence: >RC202707 ORF sequence
 Red=Cloning site Blue=ORF Green=Tags(s)

TTTTGTAATACGACTCACTATAGGGCGCCGGGAATTCGTCGACTGGATCCGGTACCGAGGAGATCTGCC
 GCC**CGATCGCC**

ATGAGCCTCCTGTCCAGCCGCGCGGCCCGTGTCCCGGTCCTTCGAGCTCCTTGTGCGCGCTGTTGGTGC
 TGCTGCTGCTGCTGACGCAGCCAGGGCCCATCGCCAGCGCTGGTCTGCCGCTGCTGTGTTGAGAGAGCT
 GCGTTGCGTTTGTACAGACCACGCAAGGAGTTCATCCCAAAATGATCAGTAATCTGCAAGTGTTCGCC
 ATAGGCCACAGTGTCCAAGGTGGAAGTGGTAGCCTCCCTGAAGAACGGGAAGGAAATTTGTCTTGATC
 CAGAAGCCCTTTCTAAAGAAAGTCATCCAGAAAATTTGGACGGTGGAAACAAGGAAAAC

ACGCGTACGCGGCCGCTCGAGCAGAAACTCATCTCAGAAGAGGATCTGGCAGCAAATGATATCCTGGATT
 ACAAGGATGACGACGATAAGGTTTAA

Protein Sequence: >RC202707 protein sequence
 Red=Cloning site Green=Tags(s)
 MSLSSRAARVPGPSSSLCALLVLLLLLTQPGPIASAGPAAAVLRELRCVCLQTTQGVHPKMISNLQVFA
 IGPQCSKVEVVASLKNKEICLDPEAPFLKVKVIQKILDGGNKEN

TRTRPLEQKLISEEDLAANDILDYKDDDDKV

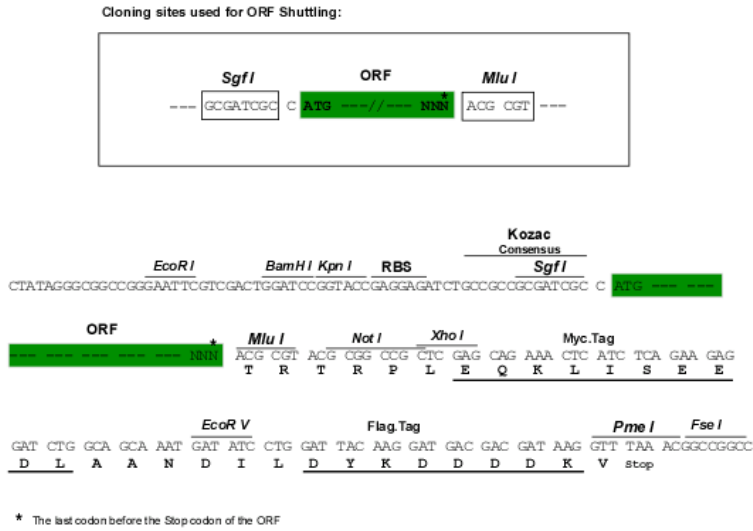
Chromatograms: https://cdn.origene.com/chromatograms/mk6050_a08.zip

Restriction Sites: SgfI-MluI

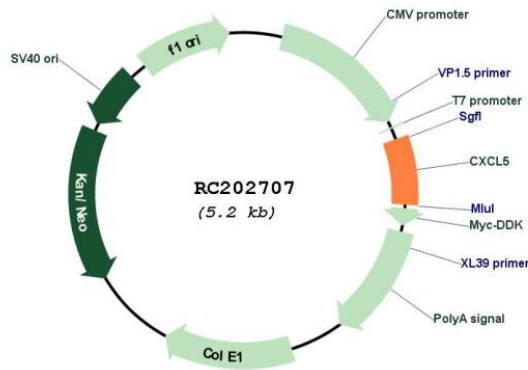


[View online »](#)

Cloning Scheme:



Plasmid Map:



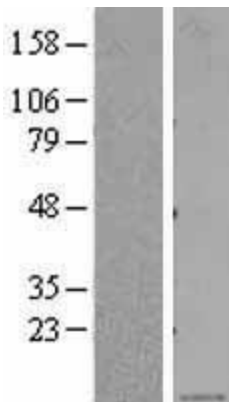
ACCN: NM_002994

ORF Size: 342 bp

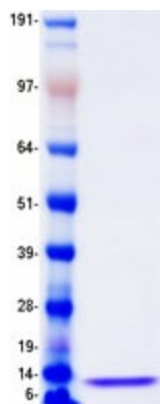
OTI Disclaimer:	Due to the inherent nature of this plasmid, standard methods to replicate additional amounts of DNA in E. coli are highly likely to result in mutations and/or rearrangements. Therefore, OriGene does not guarantee the capability to replicate this plasmid DNA. Additional amounts of DNA can be purchased from OriGene with batch-specific, full-sequence verification at a reduced cost. Please contact our customer care team at custsupport@origene.com or by calling 301.340.3188 option 3 for pricing and delivery.
	The molecular sequence of this clone aligns with the gene accession number as a point of reference only. However, individual transcript sequences of the same gene can differ through naturally occurring variations (e.g. polymorphisms), each with its own valid existence. This clone is substantially in agreement with the reference, but a complete review of all prevailing variants is recommended prior to use. More info
OTI Annotation:	This clone was engineered to express the complete ORF with an expression tag. Expression varies depending on the nature of the gene.
Components:	The ORF clone is ion-exchange column purified and shipped in a 2D barcoded Matrix tube containing 10ug of transfection-ready, dried plasmid DNA (reconstitute with 100 ul of water).
Reconstitution Method:	<ol style="list-style-type: none"> 1. Centrifuge at 5,000xg for 5min. 2. Carefully open the tube and add 100ul of sterile water to dissolve the DNA. 3. Close the tube and incubate for 10 minutes at room temperature. 4. Briefly vortex the tube and then do a quick spin (less than 5000xg) to concentrate the liquid at the bottom. 5. Store the suspended plasmid at -20°C. The DNA is stable for at least one year from date of shipping when stored at -20°C.
RefSeq:	NM_002994.5
RefSeq Size:	2505 bp
RefSeq ORF:	345 bp
Locus ID:	6374
UniProt ID:	P42830
Cytogenetics:	4q13.3
Domains:	IL8
Protein Families:	Druggable Genome, Secreted Protein
Protein Pathways:	Chemokine signaling pathway, Cytokine-cytokine receptor interaction
MW:	12 kDa

Gene Summary:

This gene encodes a protein that is a member of the CXC subfamily of chemokines. Chemokines, which recruit and activate leukocytes, are classified by function (inflammatory or homeostatic) or by structure. This protein is proposed to bind the G-protein coupled receptor chemokine (C-X-C motif) receptor 2 to recruit neutrophils, to promote angiogenesis and to remodel connective tissues. This protein is thought to play a role in cancer cell proliferation, migration, and invasion. [provided by RefSeq, May 2013]

Product images:

Western blot validation of overexpression lysate (Cat# [LY401049]) using anti-DDK antibody (Cat# [TA50011-100]). Left: Cell lysates from untransfected HEK293T cells; Right: Cell lysates from HEK293T cells transfected with RC202707 using transfection reagent MegaTran 2.0 (Cat# [TT210002]).



Coomassie blue staining of purified CXCL5 protein (Cat# [TP302707]). The protein was produced from HEK293T cells transfected with CXCL5 cDNA clone (Cat# RC202707) using MegaTran 2.0 (Cat# [TT210002]).