

Product datasheet for **RC202704**

MSMB (NM_002443) Human Tagged ORF Clone

Product data:

Product Type: Expression Plasmids
Product Name: MSMB (NM_002443) Human Tagged ORF Clone
Tag: Myc-DDK
Symbol: MSMB
Synonyms: HPC13; IGBF; MSP; MSPB; PN44; PRPS; PSP; PSP-94; PSP57; PSP94
Mammalian Cell Selection: Neomycin
Vector: pCMV6-Entry (PS100001)
E. coli Selection: Kanamycin (25 ug/mL)
ORF Nucleotide Sequence: >RC202704 ORF sequence
Red=Cloning site Blue=ORF Green=Tags(s)

TTTTGTAATACGACTCACTATAGGGCGCCGGGAATTCGTCGACTGGATCCGGTACCGAGGAGATCTGCC
GCC**CGATCGCC**

ATGAATGTTCTCCTGGGCAGCGTTGTGATCTTTGCCACCTTCGTGACTTTATGCAATGCATCATGCTATT
TCATACCTAATGAGGGAGTTCCAGGAGATTCACCAGGAAATGCATGGATCTCAAAGGAAACAAACACCC
AATAAACTCGGAGTGGCAGACTGACAACTGTGAGACATGCACTTGCTACGAAACAGAAATTCATGTTGC
ACCCTTGTCTACACCTGTGGTTATGACAAAGACAACCTGCCAAAGAATCTCAAGAAGGAGGACTGCA
AGTATATCGTGGTGGAGAAGAAGGACCCAAAAAGACCTGTTCTGTGAGTGAATGGATAATC

ACGCGTACGCGGCCGCTCGAGCAGAAACTCATCTCAGAAGAGGATCTGGCAGCAAATGATATCCTGGATT
ACAAGGATGACGACGATAAGGTTTAA

Protein Sequence: >RC202704 protein sequence
Red=Cloning site Green=Tags(s)
MNVLLGSVVIFATFVTLGNASCYFIPNEGVPDSTRKCMDLKGNKHPINSEWQTDNCETCTCYETEISCC
TLVSTPVGYDKDNCQRIFKKEDCKYIVVEKKDPKKTCSVSEWII

TRTRPLEQKLISEEDLAANDILDYKDDDDKV

Chromatograms: https://cdn.origene.com/chromatograms/mk6050_f07.zip

Restriction Sites: SgfI-MluI



[View online »](#)

Cloning Scheme:


ACCN: NM_002443

ORF Size: 342 bp

OTI Disclaimer: The molecular sequence of this clone aligns with the gene accession number as a point of reference only. However, individual transcript sequences of the same gene can differ through naturally occurring variations (e.g. polymorphisms), each with its own valid existence. This clone is substantially in agreement with the reference, but a complete review of all prevailing variants is recommended prior to use. [More info](#)

OTI Annotation: This clone was engineered to express the complete ORF with an expression tag. Expression varies depending on the nature of the gene.

Components: The ORF clone is ion-exchange column purified and shipped in a 2D barcoded Matrix tube containing 10ug of transfection-ready, dried plasmid DNA (reconstitute with 100 ul of water).

- Reconstitution Method:**
1. Centrifuge at 5,000xg for 5min.
 2. Carefully open the tube and add 100ul of sterile water to dissolve the DNA.
 3. Close the tube and incubate for 10 minutes at room temperature.
 4. Briefly vortex the tube and then do a quick spin (less than 5000xg) to concentrate the liquid at the bottom.
 5. Store the suspended plasmid at -20°C. The DNA is stable for at least one year from date of shipping when stored at -20°C.

RefSeq: [NM_002443.4](#)

RefSeq Size: 503 bp

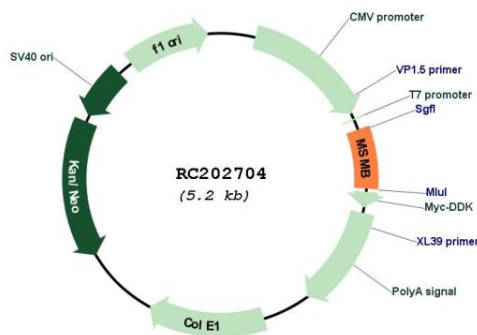
RefSeq ORF: 345 bp

Locus ID: 4477

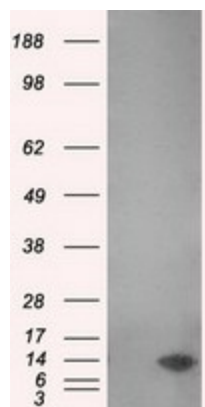
UniProt ID: [P08118](#)
Cytogenetics: 10q11.22
Protein Families: Secreted Protein, Transmembrane
MW: 12.9 kDa

Gene Summary: The protein encoded by this gene is a member of the immunoglobulin binding factor family. It is synthesized by the epithelial cells of the prostate gland and secreted into the seminal plasma. This protein has inhibin-like activity. It may have a role as an autocrine paracrine factor in uterine, breast and other female reproductive tissues. The expression of the encoded protein is found to be decreased in prostate cancer. Two alternatively spliced transcript variants encoding different isoforms are described for this gene. The use of alternate polyadenylation sites has been found for this gene. [provided by RefSeq, Jul 2008]

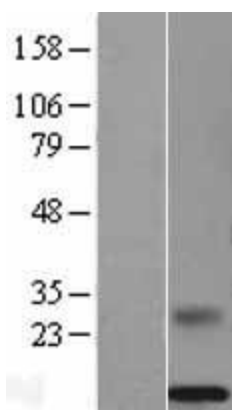
Product images:



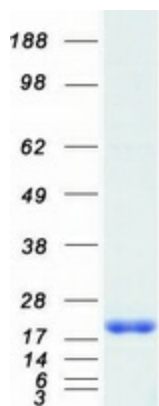
Circular map for RC202704



HEK293T cells were transfected with the pCMV6-ENTRY control (Cat# [PS100001], Left lane) or pCMV6-ENTRY MSMB (Cat# RC202704, Right lane) cDNA for 48 hrs and lysed. Equivalent amounts of cell lysates (5 ug per lane) were separated by SDS-PAGE and immunoblotted with anti-MSMB (Cat# [TA501072]). Positive lysates [LY400872] (100ug) and [LC400872] (20ug) can be purchased separately from OriGene.



Western blot validation of overexpression lysate (Cat# [LY400872]) using anti-DDK antibody (Cat# [TA50011-100]). Left: Cell lysates from untransfected HEK293T cells; Right: Cell lysates from HEK293T cells transfected with RC202704 using transfection reagent MegaTran 2.0 (Cat# [TT210002]).



Coomassie blue staining of purified MSMB protein (Cat# [TP302704]). The protein was produced from HEK293T cells transfected with MSMB cDNA clone (Cat# RC202704) using MegaTran 2.0 (Cat# [TT210002]).