

Product datasheet for **RC202700**

CLEC2B (NM_005127) Human Tagged ORF Clone

Product data:

Product Type: Expression Plasmids
Product Name: CLEC2B (NM_005127) Human Tagged ORF Clone
Tag: Myc-DDK
Symbol: CLEC2B
Synonyms: AICL; CLECSF2; HP10085; IFNRG1
Mammalian Cell Selection: Neomycin
Vector: pCMV6-Entry (PS100001)
E. coli Selection: Kanamycin (25 ug/mL)
ORF Nucleotide Sequence: >RC202700 ORF sequence
Red=Cloning site Blue=ORF Green=Tags(s)

TTTTGTAATACGACTCACTATAGGGCGGCCGGAATTCGTCGACTGGATCCGGTACCGAGGAGATCTGCC
GCC**CGATCGCC**

ATGATGACCAACATAAAAAAGTGTTTTATAATTGTTGGTGTTTTAATAACAACATAATATTACTCTGA
TAGTTAACTAACTCGAGATTCTCAGAGTTTATGCCCTATGATTGGATTGGTTTCCAAAACAAATGCTA
TTATTTCTCTAAGAAGAAGGAGATTGGAATCAAGTAAATACTGTTCCACTCAACATGCCGACCTA
ACTATAATTGACAACATAGAAGAAACGAATTTTCTTAGGCGGTATAAATGCAGTTCTGATCACTGGATTG
GACTGAAGATGGCAAAAAATCGAACAGGACAATGGGTAGATGGAGCTACATTTACCAAATCGTTTGGCAT
GAGAGGGAGTGAAGGATGTGCCTACCTCAGCGATGATGGTGCAGCAACAGCTAGATGTTACACCGAAAGA
AAATGGATTTGCAGGAAAAGAATACAC

ACGCGTACGCGGCCGCTCGAGCAGAACTCATCTCAGAAGAGGATCTGGCAGCAAATGATATCCTGGATT
ACAAGGATGACGACGATAAGGTTTAA

Protein Sequence: >RC202700 protein sequence
Red=Cloning site Green=Tags(s)

MMTKHKKCFIIVGVLITNIITLIVKLTRDSQSLCPYDWIGFQNKCYFYSKEEGDWNSSKYNCSAQHADL
TIIDNIEETNFLRRYKCSSDHWIGLKMAKNRTGQWVDGATFTKSFGMRGSEGCAYLSDDGAAATRCYTER
KWICRKRIH

TRTRPLEQKLISEEDLAANDILDYKDDDDKV

Chromatograms: https://cdn.origene.com/chromatograms/mk6578_c12.zip

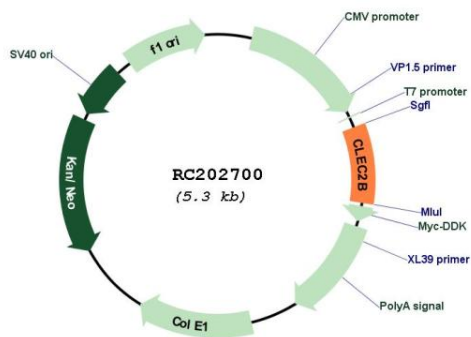


[View online >](#)

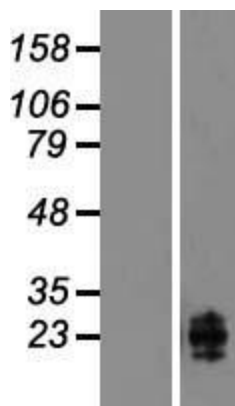
Locus ID: 9976
UniProt ID: [Q92478](#)
Cytogenetics: 12p13.31
Protein Families: Druggable Genome, Transmembrane
MW: 17.3 kDa

Gene Summary: This gene encodes a member of the C-type lectin/C-type lectin-like domain (CTL/CTLD) superfamily. Members of this family share a common protein fold and have diverse functions, such as cell adhesion, cell-cell signalling, glycoprotein turnover, and roles in inflammation and immune response. The encoded type 2 transmembrane protein may function as a cell activation antigen. An alternative splice variant has been described but its full-length sequence has not been determined. This gene is closely linked to other CTL/CTLD superfamily members on chromosome 12p13 in the natural killer gene complex region. [provided by RefSeq, Jul 2008]

Product images:



Circular map for RC202700



Western blot validation of overexpression lysate (Cat# [LY417484]) using anti-DDK antibody (Cat# [TA50011-100]). Left: Cell lysates from untransfected HEK293T cells; Right: Cell lysates from HEK293T cells transfected with RC202700 using transfection reagent MegaTran 2.0 (Cat# [TT210002]).