

Product datasheet for **RC202692**

G3BP (G3BP1) (NM_005754) Human Tagged ORF Clone

Product data:

Product Type:	Expression Plasmids
Product Name:	G3BP (G3BP1) (NM_005754) Human Tagged ORF Clone
Tag:	Myc-DDK
Symbol:	G3BP
Synonyms:	G3BP; HDH-VIII
Mammalian Cell Selection:	Neomycin
Vector:	pCMV6-Entry (PS100001)
E. coli Selection:	Kanamycin (25 ug/mL)



[View online »](#)

ORF Nucleotide Sequence:

>RC202692 ORF sequence
 Red=Cloning site Blue=ORF Green=Tags(s)

TTTTGTAATACGACTCACTATAGGGCGGCCGGAATTCGTCGACTGGATCCGGTACCGAGGAGATCTGCC
 GCC**CGCATCGCC**

ATGGTGATGGAGAAGCCTAGTCCCTGCTGGTCGGCGGGAATTTGTGAGACAGTATTACACACTGCTGA
 ACCAGGCCCCAGACATGCTGCATAGATTTTATGGAAGAAGTCTTCTTATGTCCATGGGGATTGGATTC
 AAATGGAAGCCAGCAGATGCAGTCTACGGACAGAAAGAAATCCACAGGAAAGTATGTCACAAAATTC
 ACCAACTGCCACCAAGATTGCGCATGTTGATGCTCATGCCACGCTAAATGATGGTGTGGTAGTCCAGG
 TGATGGGGCTTCTCTCTAACAACAACCAGGCTTTGAGGAGATTCATGCAAACGTTTGTCTTGTCTCTGA
 GGGGTCTGTTGCAATAAATTCTATGTTACAATGATATCTTCAGATACCAAGATGAGGTCTTTGGTGGG
 TTTGTCAGTACGCTCAGGAGGAGTCTGAAGAAGAAGTAGAGGAACCTGAAGAAAGACAGCAAACACCTG
 AGGTGGTACCTGATGATTCTGGAACCTTCTATGATCAGGCAGTTGTCAGTAAATGACATGGAAGAATTT
 AGAGGAGCTGTTGCTGAACCAGAGCCTGATCCTGAACCAGAACCAGAACAAGAAGCTGTATCTGAAATC
 CAAGAGGAAAAGCCTGAGCCAGTATTAGAAGAACTGCCCTGAGGATGCTCAGAAGAGTCTTCTCCAG
 CACCTGCAGACATAGCTCAGACAGTACAGGAAGACTTGAGGACATTTTCTTGGGCATCTGTGACCAGTAA
 GAATCTTCCACCCAGTGGAGCTGTTCCAGTTACTGGGATACCACCTCATGTTGTTAAAGTACCAGCTTCA
 CAGCCCGTCCAGAGTCTAAGCCTGAATCTCAGATTCCACCACAAAGACCTCAGCGGGATCAAAAGAGTGC
 GAGAACAACGAATAAATATTCTCCCAAGGGGACCCAGACCAATCCGTGAGGCTGGTGAAGCAAGGTGA
 CATTGAACCCGAAGAATGGTGAGACACCCTGACAGTACCAACTCTTATTGGCAACCTGCCTCATGAA
 GTGGACAAATCAGAGCTTAAAGATTTCTTTCAAAGTTATGGAAACGTGGTGGAGTTGCCCATTAACAGTG
 GTGGGAAATTACCAATTTTGGTTTTGTTGTTGATGATTCTGAGCCTGTTTCAAGTCTTTAGCAA
 CAGGCCCATCATGTTTCAAGAGTGGTCCGCTGAATGTGCAAGAGAAGAAGACTCGAGCTGCCAGGGAA
 GCGCACCAGCAGATAATCGCCTTCGGGACCTGGAGGCCTCGAGGTGGGCTGGGTGGTGAATGAGAG
 GCCCTCCCGTGGAGGCATGGTGCAGAAACCAGGATTTGGAGTGGGAAGGGGGCTTGCGCCACGGCAG

ACGCGTACGCGGCCGCTCGAGCAGAACTCATCTCAGAAGAGGATCTGGCAGCAAATGATATCTGGATT
 ACAAGGATGACGACGATAAGGTTTAA

Protein Sequence:

>RC202692 protein sequence
 Red=Cloning site Green=Tags(s)

MVMEKPSPLLVGREFVRQYYTLLNQAPDMLHRFYGKNSSVYHGGGLDSNGKPADAVYGQKEIHRKVMSONF
 TNCHTKIRHVDHATLNDGVVVQVMGLL SNNNQALRRFMQTFVLAPEGSVANKFYVHNDIFRYQDEVFGG
 FVTEPQEESEEEVEEPEERQQTPEVVPDSDGTFYDQAVVSNDMEEHLEEPVAEPEPDPEPEPEQEPVSEI
 QEEKPEPVLEETAPEDAQKSSSPAPADIAQTVQEDLRTFSWASVTSKNLPPSGAVPVTGIPPHVVKVPAS
 QPRPESKPESQIPPQRQRDQVREQRINIPPQRGPRPIREAGEQGDIEPRRMVVRHPDASHQLFIGNLPHE
 VDKSELKDFQSYGNVVELRINSGGKLPNFGFVVDSEPVQKVL SNRPIMFRGEVRLNVEEKTRAARE
 GDRRDNRLRPGGPRGGLGGMRGPPRGGMVQKPGFGVGRGLAPRQ

TRTRPLEQKLISEEDLAANDILDYKDDDDKV

Chromatograms:

https://cdn.origene.com/chromatograms/mk6153_a05.zip

Restriction Sites:

Sgfl-Mlul

Cloning Scheme:


ACCN: NM_005754

ORF Size: 1398 bp

OTI Disclaimer: The molecular sequence of this clone aligns with the gene accession number as a point of reference only. However, individual transcript sequences of the same gene can differ through naturally occurring variations (e.g. polymorphisms), each with its own valid existence. This clone is substantially in agreement with the reference, but a complete review of all prevailing variants is recommended prior to use. [More info](#)

OTI Annotation: This clone was engineered to express the complete ORF with an expression tag. Expression varies depending on the nature of the gene.

Components: The ORF clone is ion-exchange column purified and shipped in a 2D barcoded Matrix tube containing 10ug of transfection-ready, dried plasmid DNA (reconstitute with 100 ul of water).

Reconstitution Method:

1. Centrifuge at 5,000xg for 5min.
2. Carefully open the tube and add 100ul of sterile water to dissolve the DNA.
3. Close the tube and incubate for 10 minutes at room temperature.
4. Briefly vortex the tube and then do a quick spin (less than 5000xg) to concentrate the liquid at the bottom.
5. Store the suspended plasmid at -20°C. The DNA is stable for at least one year from date of shipping when stored at -20°C.

Note: Plasmids are not sterile. For experiments where strict sterility is required, filtration with 0.22um filter is required.

RefSeq: [NM_005754.3](#)

RefSeq Size: 2855 bp

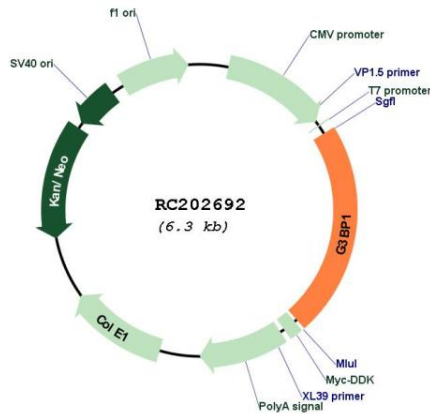
RefSeq ORF: 1401 bp

Locus ID: 10146

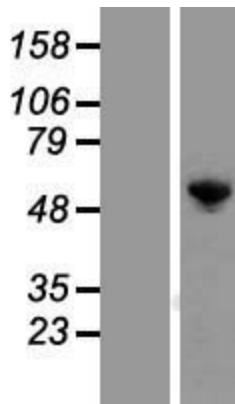
UniProt ID: [Q13283](#)
Cytogenetics: 5q33.1
Domains: RRM, NTF2
Protein Families: Druggable Genome
MW: 52.2 kDa

Gene Summary: This gene encodes one of the DNA-unwinding enzymes which prefers partially unwound 3'-tailed substrates and can also unwind partial RNA/DNA and RNA/RNA duplexes in an ATP-dependent fashion. This enzyme is a member of the heterogeneous nuclear RNA-binding proteins and is also an element of the Ras signal transduction pathway. It binds specifically to the Ras-GTPase-activating protein by associating with its SH3 domain. Several alternatively spliced transcript variants of this gene have been described, but the full-length nature of some of these variants has not been determined. [provided by RefSeq, Jul 2008]

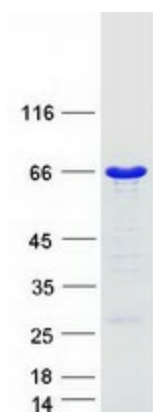
Product images:



Circular map for RC202692



Western blot validation of overexpression lysate (Cat# [LY405046]) using anti-DDK antibody (Cat# [TA50011-100]). Left: Cell lysates from untransfected HEK293T cells; Right: Cell lysates from HEK293T cells transfected with [RC210616] using transfection reagent MegaTran 2.0 (Cat# [TT210002]).



Coomassie blue staining of purified G3BP1 protein (Cat# [TP302692]). The protein was produced from HEK293T cells transfected with G3BP1 cDNA clone (Cat# RC202692) using MegaTran 2.0 (Cat# [TT210002]).