

## Product datasheet for **RC202688**

### C1D (NM\_006333) Human Tagged ORF Clone

#### Product data:

**Product Type:** Expression Plasmids  
**Product Name:** C1D (NM\_006333) Human Tagged ORF Clone  
**Tag:** Myc-DDK  
**Symbol:** C1D  
**Synonyms:** hC1D; LRP1; Rrp47; SUN-CoR; SUNCOR  
**Mammalian Cell Selection:** Neomycin  
**Vector:** pCMV6-Entry (PS100001)  
**E. coli Selection:** Kanamycin (25 ug/mL)  
**ORF Nucleotide Sequence:** >RC202688 ORF sequence  
Red=Cloning site Blue=ORF Green=Tags(s)

TTTTGTAATACGACTCACTATAGGGCGGCCGGAATTCGTCGACTGGATCCGGTACCGAGGAGATCTGCC  
GCC**CGATCGCC**

ATGGCAGGTGAAGAAATTAATGAAGACTATCCAGTAGAAATTCACGAGTATTTGTCAGCGTTTGAGAATT  
CCATTGGTGCTGTGGATGAGATGCTGAAGACCATGATGTCTGTTCTAGAAATGAGTTGTTGCAGAAAGTT  
GGATCCACTTGAACAAGCAAAAGTGGATTTGGTTTCTGCATACACATTAATCAATGTTTTGGGTTTAT  
TTGGCAACCCAAGGAGTTAATCCTAAGGAACATCCAGTAAACAGGAATTGAAAGAATCAGAGTATATA  
TGAACAGAGTCAAGGAAATAACAGACAAGAAAAAGGCTGGCAAGCTGGACAGAGGTGCAGCTTCAAGATT  
TGTAATAAATGCCCTCTGGGAACCAAAATCGAAAAATGCATCAAAAGTTGCCAATAAAGGAAAAAGCAAA  
AGT

**ACGCGT**ACGCGGCCGCTCGAGCAGAACTCATCTCAGAAGAGGATCTGGCAGCAATGATATCCTGGATT  
ACAAGGATGACGACGATAAGGTTTAA

**Protein Sequence:** >RC202688 protein sequence  
Red=Cloning site Green=Tags(s)  
MAGEEINEDYPVEIHEYLSAFENSIGAVDEMLKTMMSVSRNELLQKLDPLEQAKVDLVSAYTLNSMFWVY  
LATQGVNPKHEPVKQELERIRVYMNRVKEITDKKAGKLDRGAASRFVKNALWEPKSKNASKVANKGKSK  
S

**TR**TRPLEQKLISEEDLAANDILDYKDDDDKV

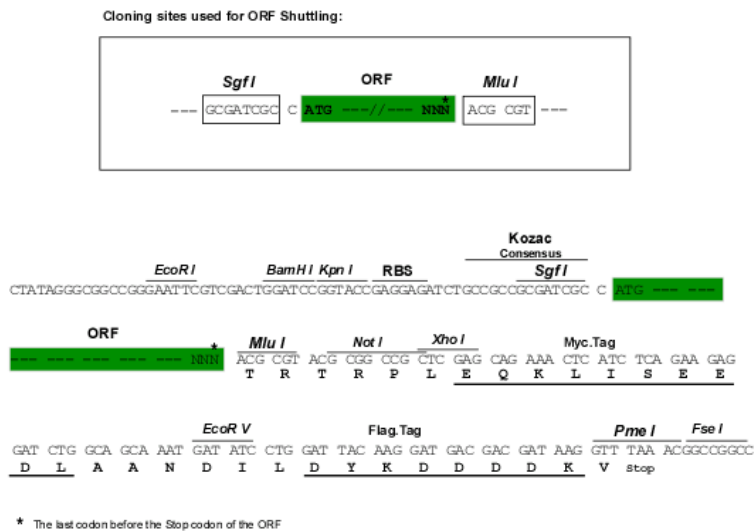
**Chromatograms:** [https://cdn.origene.com/chromatograms/mk6415\\_h11.zip](https://cdn.origene.com/chromatograms/mk6415_h11.zip)



[View online »](#)

Restriction Sites: SgfI-MluI

Cloning Scheme:



ACCN: NM\_006333

ORF Size: 423 bp

OTI Disclaimer: The molecular sequence of this clone aligns with the gene accession number as a point of reference only. However, individual transcript sequences of the same gene can differ through naturally occurring variations (e.g. polymorphisms), each with its own valid existence. This clone is substantially in agreement with the reference, but a complete review of all prevailing variants is recommended prior to use. [More info](#)

OTI Annotation: This clone was engineered to express the complete ORF with an expression tag. Expression varies depending on the nature of the gene.

Components: The ORF clone is ion-exchange column purified and shipped in a 2D barcoded Matrix tube containing 10ug of transfection-ready, dried plasmid DNA (reconstitute with 100 ul of water).

Reconstitution Method:

1. Centrifuge at 5,000xg for 5min.
2. Carefully open the tube and add 100ul of sterile water to dissolve the DNA.
3. Close the tube and incubate for 10 minutes at room temperature.
4. Briefly vortex the tube and then do a quick spin (less than 5000xg) to concentrate the liquid at the bottom.
5. Store the suspended plasmid at -20°C. The DNA is stable for at least one year from date of shipping when stored at -20°C.

Note: Plasmids are not sterile. For experiments where strict sterility is required, filtration with 0.22um filter is required.

RefSeq: [NM\\_006333.4](#)

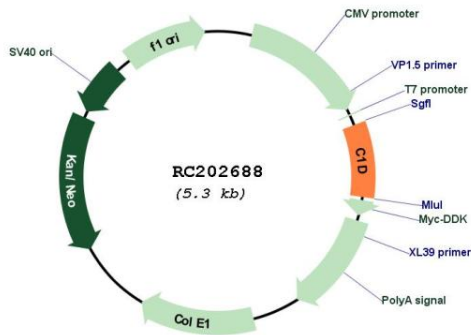
RefSeq Size: 1207 bp

RefSeq ORF: 426 bp

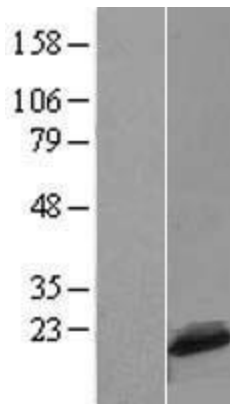
**Locus ID:** 10438  
**UniProt ID:** [Q13901](#)  
**Cytogenetics:** 2p14  
**Protein Families:** Druggable Genome  
**Protein Pathways:** RNA degradation  
**MW:** 16 kDa

**Gene Summary:** The protein encoded by this gene is a DNA binding and apoptosis-inducing protein and is localized in the nucleus. It is also a Rac3-interacting protein which acts as a corepressor for the thyroid hormone receptor. This protein is thought to regulate TRAX/Translin complex formation. Alternate splicing results in multiple transcript variants that encode the same protein. Multiple pseudogenes of this gene are found on chromosome 10.[provided by RefSeq, Jun 2010]

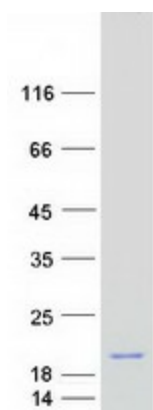
### Product images:



Circular map for RC202688



Western blot validation of overexpression lysate (Cat# [LY416720]) using anti-DDK antibody (Cat# [TA50011-100]). Left: Cell lysates from untransfected HEK293T cells; Right: Cell lysates from HEK293T cells transfected with RC202688 using transfection reagent MegaTran 2.0 (Cat# [TT210002]).



Coomassie blue staining of purified C1D protein (Cat# [TP302688]). The protein was produced from HEK293T cells transfected with C1D cDNA clone (Cat# RC202688) using MegaTran 2.0 (Cat# [TT210002]).