

## Product datasheet for RC202683

### SERPINB3 (NM\_006919) Human Tagged ORF Clone

#### Product data:

Product Type:	Expression Plasmids
Product Name:	SERPINB3 (NM_006919) Human Tagged ORF Clone
Tag:	Myc-DDK
Symbol:	SERPINB3
Synonyms:	HsT1196; SCC; SCCA-1; SCCA-PD; SCCA1; SSCA1; T4-A
Mammalian Cell Selection:	Neomycin
Vector:	pCMV6-Entry (PS100001)
E. coli Selection:	Kanamycin (25 ug/mL)
ORF Nucleotide Sequence:	>RC202683 ORF sequence Red=Cloning site Blue=ORF Green=Tags(s)

TTTTGTAATACGACTCACTATAGGGCGGCCGGAATTCGTCGACTGGATCCGGTACCGAGGAGATCTGCC  
GCC**CGATCGCC**

ATGAATCACTCAGTGAAGCCAACACCAAGTTCATGTTGACCTGTTCCAACAGTTCAGAAAAATCAAAG  
AGAACAACATCTTCTATCCCTATCAGCATCACATCAGCATTAGGGATGGTCTCTTAGGAGCCAAAGA  
CAACACTGCACAACAGATTAAGAAGTTCTTCACTTTGATCAAGTCACAGAGAACCACAGGAAAAGCT  
GCAACATATCATGTTGATAGGTCAGGAAATGTTTCATCACCAGTTTCAAAGCTTCTGACTGAATTCAACA  
AATCCACTGATGCATATGAGCTGAAGATCGCCAACAAGCTCTTCGAGAAAAACGTATCTATTTTTACA  
GGAATATTTAGATGCCATCAAGAAATTTACCAGACCAGTGTGGAATCTGTTGATTTGCAAATGCTCCA  
GAAGAAAGTCGAAAGAAGATTAACCTCCTGGGTGAAAAGTCAAACGAATGAAAAATTAATAAACCTAATTC  
CTGAAGGTAATATTGGCAGCAATACCACATTGGTCTTGTGAACGAATCTATTTCAAAGGGCAGTGGGA  
GAAGAAATTTAATAAAGAAGATACTAAAGAGGAAAAATTTGGCCAAACAAGAATACATACAAGTCCATA  
CAGATGATGAGGCAATACACATCTTTTCATTTGCCTCGCTGGAGGATGTACAGGCCAAGTCTGGAAA  
TACCATACAAAGGCAAAGATCTAAGCATGATTGTGTTGCTGCCAATGAAATCGATGGTCTCCAGAAGCT  
TGAAGAGAACTCACTGCTGAGAAATGATGGAATGGACAAGTTGACGACAAGTTCAGGACACGTTGAGAACCATGGGAA  
GATTTACACTTACCTCGTTCAAAGTGAAGAGAGCTATGACCTCAAGGACACGTTGAGAACCATGGGAA  
TGGTGGATATCTTCAATGGGGATGCAGACCTCTCAGGCATGACCGGGAGCCGCGTCTCGTGCTATCTGG  
AGTCTACACAAGGCTTTGTGGAGTTACAGAGGAGGGAGCAGAAGCTGCAGCTGCCACCCTGTAGTA  
GGATTCGGATCATCACCTACTTCAACTAATGAAGAGTTCCATTGTAATCACCCCTTCTATTCTTCATAA  
GGCAAAAATAAGACCAACAGCATCTCTTCTATGGCAGATTCTCATCCCCG

**ACGCGT**ACGCGGCCGCTCGAGCAGAACTCATCTCAGAAGAGGATCTGGCAGCAATGATATCCTGGATT  
ACAAGGATGACGACGATAAGGTTTAA



[View online >](#)

**Protein Sequence:** >RC202683 protein sequence  
Red=Cloning site Green=Tags(s)

MNSLSEANTKFMFDLFQQFRKSKENNIFYSPISITSALGMVLLGAKDNTAQQIKKVLHFDQVTENTTGKA  
 ATYHVDRSGNVHHQFQKLLTEFNKSTDAYELKIANKLFGEKTYLFLQEYLDAIKKFYQTSVESVDFANAP  
 EESRKKINSWVESQTNKIKNLIPEGNIGSNTTLVLVNAIYFKGQWEKKFNKEDTKEEFWPNKNTYKSI  
 QMMRQYTSFHFASLEDVQAKVLEIPYKGDLSMIVLLPNEIDGLQKLEEKLTAEKLMEWTSLQNMRETRV  
 DLHLPRFKVEESYDLKDLRTMGMVDIFNGDADLSGMTGSRGLVLSGVLHKAFFEVEEAEAAAATAVV  
 GFGSSPTSTNEEFHCNHPFLFFIRQNKNTSILFYGRFSSP

TRTRPLEQKLISEEDLAANDILDYKDDDDKV

**Chromatograms:** [https://cdn.origene.com/chromatograms/mk6269\\_d10.zip](https://cdn.origene.com/chromatograms/mk6269_d10.zip)

**Restriction Sites:** SgfI-MluI

**Cloning Scheme:**



\* The last codon before the Stop codon of the ORF

**ACCN:** NM\_006919

**ORF Size:** 1170 bp

**OTI Disclaimer:** The molecular sequence of this clone aligns with the gene accession number as a point of reference only. However, individual transcript sequences of the same gene can differ through naturally occurring variations (e.g. polymorphisms), each with its own valid existence. This clone is substantially in agreement with the reference, but a complete review of all prevailing variants is recommended prior to use. [More info](#)

**OTI Annotation:** This clone was engineered to express the complete ORF with an expression tag. Expression varies depending on the nature of the gene.

**Components:** The ORF clone is ion-exchange column purified and shipped in a 2D barcoded Matrix tube containing 10ug of transfection-ready, dried plasmid DNA (reconstitute with 100 ul of water).

**Reconstitution Method:**

1. Centrifuge at 5,000xg for 5min.
2. Carefully open the tube and add 100ul of sterile water to dissolve the DNA.
3. Close the tube and incubate for 10 minutes at room temperature.
4. Briefly vortex the tube and then do a quick spin (less than 5000xg) to concentrate the liquid at the bottom.
5. Store the suspended plasmid at -20°C. The DNA is stable for at least one year from date of shipping when stored at -20°C.

**Note:** Plasmids are not sterile. For experiments where strict sterility is required, filtration with 0.22um filter is required.

**RefSeq:** [NM\\_006919.3](#)

**RefSeq Size:** 1793 bp

**RefSeq ORF:** 1173 bp

**Locus ID:** 6317

**UniProt ID:** [P29508](#)

**Cytogenetics:** 18q21.33

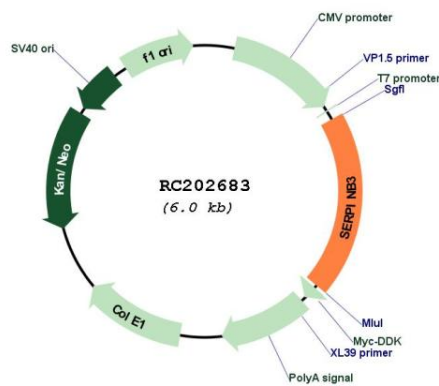
**Domains:** SERPIN

**Protein Families:** Druggable Genome, Secreted Protein

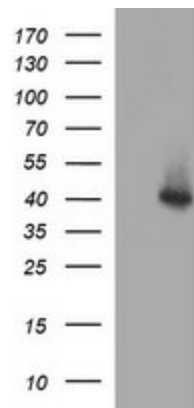
**MW:** 44.6 kDa

**Gene Summary:** May act as a papain-like cysteine protease inhibitor to modulate the host immune response against tumor cells. Also functions as an inhibitor of UV-induced apoptosis via suppression of the activity of c-Jun NH(2)-terminal kinase (JNK1).[UniProtKB/Swiss-Prot Function]

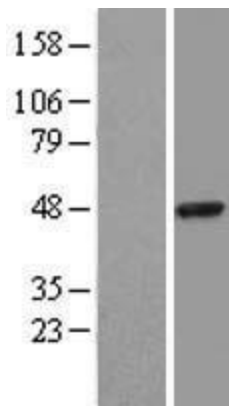
**Product images:**



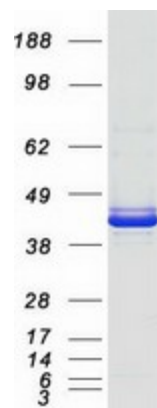
Circular map for RC202683



HEK293T cells were transfected with the pCMV6-ENTRY control (Cat# [PS100001], Left lane) or pCMV6-ENTRY SERPINB3 (Cat# RC202683, Right lane) cDNA for 48 hrs and lysed. Equivalent amounts of cell lysates (5 ug per lane) were separated by SDS-PAGE and immunoblotted with anti-SERPINB3(Cat# [TA506878]). Positive lysates [LY416321] (100ug) and [LC416321] (20ug) can be purchased separately from OriGene.



Western blot validation of overexpression lysate (Cat# [LY416321]) using anti-DDK antibody (Cat# [TA50011-100]). Left: Cell lysates from untransfected HEK293T cells; Right: Cell lysates from HEK293T cells transfected with RC202683 using transfection reagent MegaTran 2.0 (Cat# [TT210002]).



Coomassie blue staining of purified SERPINB3 protein (Cat# [TP302683]). The protein was produced from HEK293T cells transfected with SERPINB3 cDNA clone (Cat# RC202683) using MegaTran 2.0 (Cat# [TT210002]).