

Product datasheet for **RC202681L3V**

NRAS (NM_002524) Human Tagged ORF Clone Lentiviral Particle

Product data:

Product Type:	Lentiviral Particles
Product Name:	NRAS (NM_002524) Human Tagged ORF Clone Lentiviral Particle
Symbol:	NRAS
Synonyms:	ALPS4; CMNS; N-ras; NCMS; NRAS1; NS6
Mammalian Cell Selection:	Puromycin
Vector:	pLenti-C-Myc-DDK-P2A-Puro (PS100092)
Tag:	Myc-DDK
ACCN:	NM_002524
ORF Size:	567 bp
ORF Nucleotide Sequence:	The ORF insert of this clone is exactly the same as(RC202681).
OTI Disclaimer:	The molecular sequence of this clone aligns with the gene accession number as a point of reference only. However, individual transcript sequences of the same gene can differ through naturally occurring variations (e.g. polymorphisms), each with its own valid existence. This clone is substantially in agreement with the reference, but a complete review of all prevailing variants is recommended prior to use. More info
OTI Annotation:	This clone was engineered to express the complete ORF with an expression tag. Expression varies depending on the nature of the gene.
RefSeq:	NM_002524.2
RefSeq Size:	4454 bp
RefSeq ORF:	570 bp
Locus ID:	4893
UniProt ID:	P01111
Cytogenetics:	1p13.2
Domains:	ras, RAS, RHO, RAB
Protein Families:	Druggable Genome



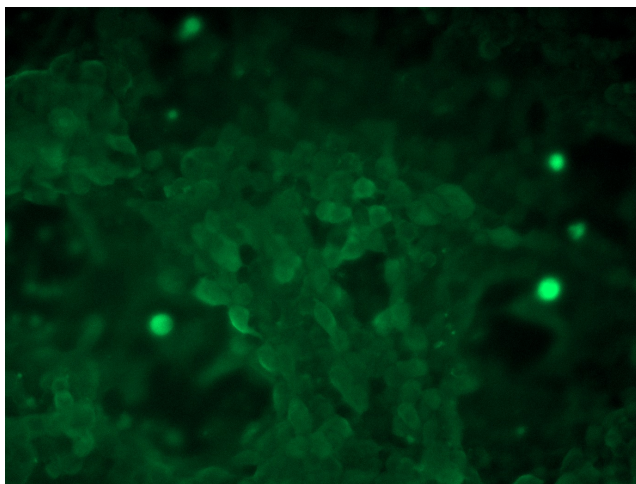
[View online »](#)

Protein Pathways: Acute myeloid leukemia, Axon guidance, B cell receptor signaling pathway, Bladder cancer, Chemokine signaling pathway, Chronic myeloid leukemia, Endometrial cancer, ErbB signaling pathway, Fc epsilon RI signaling pathway, Gap junction, Glioma, GnRH signaling pathway, Insulin signaling pathway, Long-term depression, Long-term potentiation, MAPK signaling pathway, Melanogenesis, Melanoma, Natural killer cell mediated cytotoxicity, Neurotrophin signaling pathway, Non-small cell lung cancer, Pathways in cancer, Prostate cancer, Regulation of actin cytoskeleton, Renal cell carcinoma, T cell receptor signaling pathway, Thyroid cancer, Tight junction, VEGF signaling pathway

MW: 21.2 kDa

Gene Summary: This is an N-ras oncogene encoding a membrane protein that shuttles between the Golgi apparatus and the plasma membrane. This shuttling is regulated through palmitoylation and depalmitoylation by the ZDHHC9-GOLGA7 complex. The encoded protein, which has intrinsic GTPase activity, is activated by a guanine nucleotide-exchange factor and inactivated by a GTPase activating protein. Mutations in this gene have been associated with somatic rectal cancer, follicular thyroid cancer, autoimmune lymphoproliferative syndrome, Noonan syndrome, and juvenile myelomonocytic leukemia. [provided by RefSeq, Jun 2011]

Product images:



[RC202681L3] was used to prepare Lentiviral particles using [TR30037] packaging kit. HEK293T cells were transduced with RC202681L3V particle to overexpress human NRAS-Myc-DDK fusion protein.