

Product datasheet for RC202679

Apc10 (ANAPC10) (NM_014885) Human Tagged ORF Clone

Product data:

Product Type: Expression Plasmids
Product Name: Apc10 (ANAPC10) (NM_014885) Human Tagged ORF Clone
Tag: Myc-DDK
Symbol: Apc10
Synonyms: APC10; DOC1
Mammalian Cell Selection: Neomycin
Vector: pCMV6-Entry (PS100001)
E. coli Selection: Kanamycin (25 ug/mL)
ORF Nucleotide Sequence: >RC202679 ORF sequence
 Red=Cloning site Blue=ORF Green=Tags(s)

TTTTGTAATACGACTCACTATAGGGCGCCGGGAATTCGTCGACTGGATCCGGTACCGAGGAGATCTGCC
 GCC**CGATCGCC**

ATGACTACACCAAACAAGACACCTCCTGGTGCTGACCCCAAGCAGTTGGAAAGGACTGGAACAGTACGGG
 AAATTGGGTCACAAGCTGTTTGGTCACTCTCATCTTGCAAACCAGGATTTGGAGTGGATCAGTTACGAGA
 TGACAATCTAGAACTTATTGGCAATCAGATGGTCCCAGCCTCATTTAGTGAACATCCAATTCAGAAGA
 AAAACAACAGTGAAGACATTATGATTTATGCAGACTACAAATCTGATGAAAGCTATACTCCAAGCAAGA
 TCTCAGTCAGAGTAGGAAATAATTTTACAACCTCAAGAAATTCGGCAACTTGAGTTGGTGAACCAAG
 TGGCTGGATTCATGTTCCCTAACTGACAATCATAAGAAGCCAACCTCGTACATTCATGATACAGATTGCT
 GTTCTAGCCAATCACCAGAATGGAAGAGACACCCATATGAGACAAATTAATATACACACCAGTAGAAG
 AGAGCTCCATTGGTAAATTTCTAGATGTACAACATATAGATTTTCATGATGTATCGTTCAATAAGG

ACGCGTACGCGGCCGCTCGAGCAGAACTCATCTCAGAAGAGGATCTGGCAGCAAATGATATCCTGGATT
 ACAAGGATGACGACGATAAGGTTTAA

Protein Sequence: >RC202679 protein sequence
 Red=Cloning site Green=Tags(s)

MTTPNKTPPGADPKQLERTGTVREIGSQAVWSLSSCKPGFGVDQLRDDNLETYWQSDGSQPHLVNIQFRR
 KTTVKTLCIYADYKSDSYTPSKISVRVGNFNHNLQEIRQLELVEPSGWIHVPLTDNHKKPTRTFMIQIA
 VLANHQNGRDTHMRQIKIYTPVEESSIGKFPRTTIDFMMYRSIR

TRTRPLEQKLISEEDLAANDILDYKDDDDKV

Chromatograms: https://cdn.origene.com/chromatograms/mk6414_f12.zip



[View online »](#)

Restriction Sites: SgfI-MluI

Cloning Scheme:



ACCN: NM_014885

ORF Size: 555 bp

OTI Disclaimer: The molecular sequence of this clone aligns with the gene accession number as a point of reference only. However, individual transcript sequences of the same gene can differ through naturally occurring variations (e.g. polymorphisms), each with its own valid existence. This clone is substantially in agreement with the reference, but a complete review of all prevailing variants is recommended prior to use. [More info](#)

OTI Annotation: This clone was engineered to express the complete ORF with an expression tag. Expression varies depending on the nature of the gene.

Components: The ORF clone is ion-exchange column purified and shipped in a 2D barcoded Matrix tube containing 10ug of transfection-ready, dried plasmid DNA (reconstitute with 100 ul of water).

Reconstitution Method:

1. Centrifuge at 5,000xg for 5min.
2. Carefully open the tube and add 100ul of sterile water to dissolve the DNA.
3. Close the tube and incubate for 10 minutes at room temperature.
4. Briefly vortex the tube and then do a quick spin (less than 5000xg) to concentrate the liquid at the bottom.
5. Store the suspended plasmid at -20°C. The DNA is stable for at least one year from date of shipping when stored at -20°C.

Note: Plasmids are not sterile. For experiments where strict sterility is required, filtration with 0.22um filter is required.

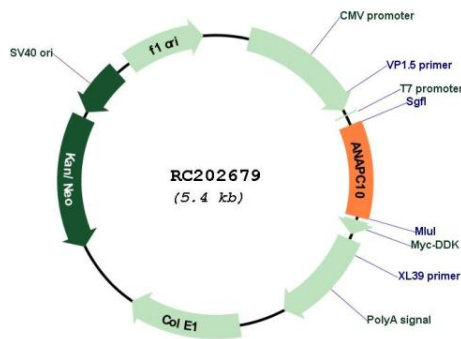
RefSeq: [NM_014885.4](#)

RefSeq Size: 1457 bp

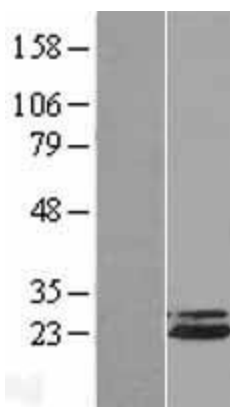
RefSeq ORF: 558 bp

Locus ID: 10393
UniProt ID: [Q9UM13](#)
Cytogenetics: 4q31.21
Protein Families: Druggable Genome
Protein Pathways: Cell cycle, Oocyte meiosis, Progesterone-mediated oocyte maturation, Ubiquitin mediated proteolysis
MW: 21.3 kDa
Gene Summary: ANAPC10 is a core subunit of the anaphase-promoting complex (APC), or cyclosome, a ubiquitin protein ligase that is essential for progression through the cell cycle. APC initiates sister chromatid separation by ubiquitinating the anaphase inhibitor securin (PTTG1; MIM 604147) and triggers exit from mitosis by ubiquitinating cyclin B (CCNB1; MIM 123836), the activating subunit of cyclin-dependent kinase-1 (CDK1; MIM 116940) (summary by Wendt et al., 2001 [PubMed 11524682]).[supplied by OMIM, Feb 2011]

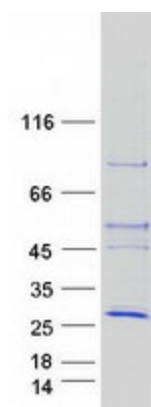
Product images:



Circular map for RC202679



Western blot validation of overexpression lysate (Cat# [LY414956]) using anti-DDK antibody (Cat# [TA50011-100]). Left: Cell lysates from un-transfected HEK293T cells; Right: Cell lysates from HEK293T cells transfected with RC202679 using transfection reagent MegaTran 2.0 (Cat# [TT210002]).



Coomassie blue staining of purified ANAPC10 protein (Cat# [TP302679]). The protein was produced from HEK293T cells transfected with ANAPC10 cDNA clone (Cat# RC202679) using MegaTran 2.0 (Cat# [TT210002]).