

Product datasheet for RC202669

Nucleoside Diphosphate Kinase 7 (NME7) (NM_197972) Human Tagged ORF Clone

Product data:

Product Type:	Expression Plasmids
Product Name:	Nucleoside Diphosphate Kinase 7 (NME7) (NM_197972) Human Tagged ORF Clone
Tag:	Myc-DDK
Symbol:	NME7
Synonyms:	CFAP67; MN23H7; NDK 7; NDK7; nm23-H7
Vector:	pCMV6-Entry (PS100001)
E. coli Selection:	Kanamycin (25 ug/mL)
Cell Selection:	Neomycin
ORF Nucleotide Sequence:	>RC202669 ORF sequence Red=Cloning site Blue=ORF Green=Tags(s)

TTTTGTAATACGACTCACTATAGGGCGCCGGAATTCGTCGACTGGATCCGGTACCGAGGAGATCTGCC
GCCGCGATCGCC

ATGAATCATAGTGAAAGATTCGTTTTTCATTGCAGAGTGGTATGATCCAAATGCTTCACTTCTTCGACGTT
ATGAGCTTTTATTTTACCAGGGGATGGATCTGTTGAAATGCATGATGTAAGAATCATCGCACCTTTT
AAAGCGGACCAAATATGATAACCTGCCTTGAAGATTTATTTATAGGCAACAAAGTGAATGCTTCTCT
CGACAACCTGGTATTAATTGACTATGGGGATCAATATACAGCTCGCCAGCTGGGCAGTAGGAAAGAAAAA
CGCTAGCCCTAATTAACCAGATGCAATATCAAAGGCTGGAGAAATAATTGAAATAATAAACAAAGCTGG
ATTTACTATAACCAAACCTCAAAATGATGATGCTTTCAAGGAAAGAAGCATTGGATTTTTCATGTAGATCAC
CAGTCAAGACCCTTTTCAATGAGCTGATCCAGTTTATTACAACCTGGTCCTATTATTGCCATGGAGATTT
TAAGAGATGATGCTATATGTGAATGGAAAAGACTGCTGGGACCTGCAAACCTCTGGAGTGGCACGCACAGA
TGCTTCTGAAAGCATTAGAGCCCTCTTTGGAACAGATGGCATAAGAAATGCAGCGCATGGCCCTGATTCT
TTTGCTTCTGCGCCAGAGAAAATGGAGTTGTTTTTCTTCAAGTGGAGTTGTGGGCCGGCAAACACTG
CTAAATTTACTAATTGTACCTGTTGCATTGTTAAACCCCATGCTGTCAGTGAAGGACTGTTGGGAAAGAT
CCTGATGGCTATCCGAGATGCAGGTTTTGAAATCTCAGCTATGCAGATGTTCAATATGGATCGGGTTAAT
GTTGAGGAATTCTATGAAGTTTATAAAGGAGTAGTGACCGAATATCATGACATGGTGACAGAAATGTATT
CTGGCCCTTGTGTAGCAATGGAGATTCAACAGAATAATGCTACAAAGACATTTTCGAGAATTTTGTGGACC
TGCTGATCCTGAAATTGCCCGGCATTTACGCCCTGGAACCTCTCAGAGCAATCTTTGGTAAAACTAAGATC
CAGAATGCTGTTCACTGTACTGATCTGCCAGAGGATGGCCTATTAGAGGTTCAACTTCTTCAAGATCT
TGGATAAT

ACGCGTACGCGGCCGCTCGAGCAGAAACTCATCTCAGAAGAGGATCTGGCAGCAAATGATATCCTGGATT
ACAAGGATGACGACGATAAGGTTTAA



[View online »](#)

Protein Sequence: >RC202669 protein sequence
 Red=Cloning site Green=Tags(s)

MNHSERFVFI AEWYDPNASLLRRYELLFYPGDGSVEMHDVKNHRTFLKRTKYDNLHLEDLFIGNKVNVFS
 RQLVLIDYGDQYARQLGSRKEKTLALIKPDAISKAGEIIEIINKAGFTITKLKMMMLSRKEALDFHVDH
 QSRPFFNELIQFITTGPIIAMEILRDDAICEWKRLLPANSGVARTDASEIRALFGTDGIRNAAHGPD
 FASAAREMELFFPSSGGCGPANTAKFTNCTCCI V KPHAVSEGLLGKILMAIRDAGFEISAMQMFNMDRVN
 VEEFYEVYKGVVTEYHDMVTEMYSGPCVAMEIQQNNATKTFREFCGPADPEIARHLRPGTLRAIFGKTKI
 QNAVHCTDLPEDGLLEVQYFFKILDN

TRTRPLEQKLISEEDLAANDILDYKDDDDKV

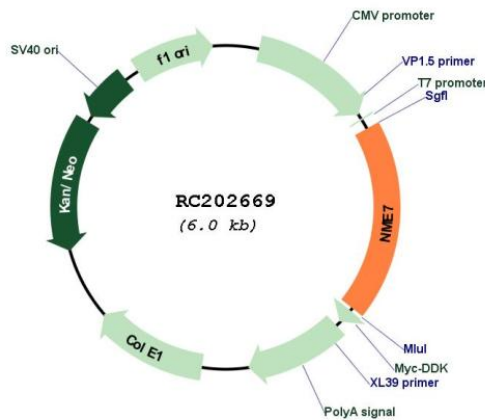
Chromatograms: https://cdn.origene.com/chromatograms/mk6415_f10.zip

Restriction Sites: SgfI-MluI

Cloning Scheme:

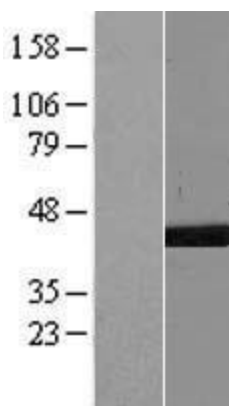


Plasmid Map:

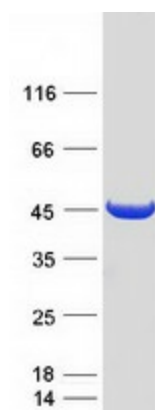


ACCN:	NM_197972
ORF Size:	1131 bp
OTI Disclaimer:	The molecular sequence of this clone aligns with the gene accession number as a point of reference only. However, individual transcript sequences of the same gene can differ through naturally occurring variations (e.g. polymorphisms), each with its own valid existence. This clone is substantially in agreement with the reference, but a complete review of all prevailing variants is recommended prior to use. More info
OTI Annotation:	This clone was engineered to express the complete ORF with an expression tag. Expression varies depending on the nature of the gene.
RefSeq Size:	1625 bp
RefSeq ORF:	1023 bp
Locus ID:	29922
UniProt ID:	Q9Y5B8 , A0A024R8Z7
Protein Families:	Druggable Genome
Protein Pathways:	Metabolic pathways, Purine metabolism, Pyrimidine metabolism
MW:	42.5 kDa
Gene Summary:	This gene encodes a member of the non-metastatic expressed family of nucleoside diphosphate kinases. Members of this family are enzymes that catalyzes phosphate transfer from nucleoside triphosphates to nucleoside diphosphates. This protein contains two kinase domains, one of which is involved in autophosphorylation and the other may be inactive. This protein localizes to the centrosome and functions as a component of the gamma-tubulin ring complex which plays a role in microtubule organization. Mutations in this gene may be associated with venous thromboembolism. Alternate splicing results in multiple transcript variants. [provided by RefSeq, Sep 2016]

Product images:



Western blot validation of overexpression lysate (Cat# [LY405095]) using anti-DDK antibody (Cat# [TA50011-100]). Left: Cell lysates from untransfected HEK293T cells; Right: Cell lysates from HEK293T cells transfected with RC202669 using transfection reagent MegaTran 2.0 (Cat# [TT210002]).



Coomassie blue staining of purified NME7 protein (Cat# [TP302669]). The protein was produced from HEK293T cells transfected with NME7 cDNA clone (Cat# RC202669) using MegaTran 2.0 (Cat# [TT210002]).