

Product datasheet for **RC202658**

RPS27L (NM_015920) Human Tagged ORF Clone

Product data:

Product Type: Expression Plasmids
Product Name: RPS27L (NM_015920) Human Tagged ORF Clone
Tag: Myc-DDK
Symbol: RPS27L
Mammalian Cell Selection: Neomycin
Vector: pCMV6-Entry (PS100001)
E. coli Selection: Kanamycin (25 ug/mL)
ORF Nucleotide Sequence: >RC202658 ORF sequence
Red=Cloning site Blue=ORF Green=Tags(s)

TTTTGTAATACGACTCACTATAGGGCGGCCGGAATTCGTCGACTGGATCCGGTACCGAGGAGATCTGCC
GCC**CGATCGCC**

ATGCCTTTGGCTAGAGATTTACTACATCCGTCCTTGAAGAGGAAAAGAAAAACATAAAGAGAAACGCC
TAGTACAAAGTCCAAATCTTACTTTATGGATGTAATGTCCAGGTTGCTACAAGATCACCACGGTTTT
CAGCCATGCTCAGACAGTGGTTCTTTGTGTAGGTTGTTCAACAGTGTGTGCCAGCCTACAGGAGGAAAG
GCCAGACTCACAGAAGGGTGTTCATTTAGAAGAAAGCAAC

ACGCGTACGCGGCCGCTCGAGCAGAACTCATCTCAGAAGAGGATCTGGCAGCAAATGATATCCTGGATT
ACAAGGATGACGACGATAAGGTTTAA

Protein Sequence: >RC202658 protein sequence
Red=Cloning site Green=Tags(s)
MPLARDLLHPSLEEEKHKHEKRLVQSPNSYFMDVKCPGKYKITTTFVSHAQTVVLCVGCSTVLCQPTGGK
ARLTEGCSFRRKQH

TRTRPLEQKLISEEDLAANDILDYKDDDDKV

Chromatograms: https://cdn.origene.com/chromatograms/mk6415_a11.zip

Restriction Sites: Sgfl-Mlul



[View online »](#)

Cloning Scheme:


ACCN: NM_015920

ORF Size: 252 bp

OTI Disclaimer: The molecular sequence of this clone aligns with the gene accession number as a point of reference only. However, individual transcript sequences of the same gene can differ through naturally occurring variations (e.g. polymorphisms), each with its own valid existence. This clone is substantially in agreement with the reference, but a complete review of all prevailing variants is recommended prior to use. [More info](#)

OTI Annotation: This clone was engineered to express the complete ORF with an expression tag. Expression varies depending on the nature of the gene.

Components: The ORF clone is ion-exchange column purified and shipped in a 2D barcoded Matrix tube containing 10ug of transfection-ready, dried plasmid DNA (reconstitute with 100 ul of water).

Reconstitution Method:

1. Centrifuge at 5,000xg for 5min.
2. Carefully open the tube and add 100ul of sterile water to dissolve the DNA.
3. Close the tube and incubate for 10 minutes at room temperature.
4. Briefly vortex the tube and then do a quick spin (less than 5000xg) to concentrate the liquid at the bottom.
5. Store the suspended plasmid at -20°C. The DNA is stable for at least one year from date of shipping when stored at -20°C.

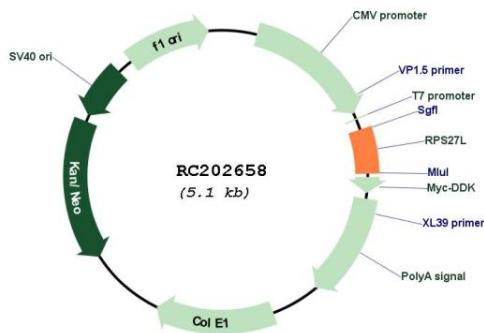
RefSeq: [NM_015920.4](#)

RefSeq Size: 1084 bp

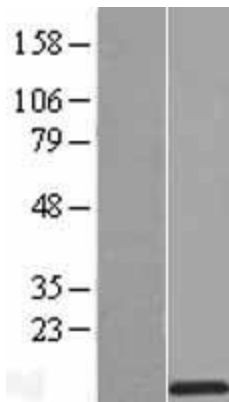
RefSeq ORF: 255 bp

Locus ID: 51065
UniProt ID: [Q71UM5](#)
Cytogenetics: 15q22.2
Domains: Ribosomal_S27e
Protein Pathways: Ribosome
MW: 9.5 kDa
Gene Summary: This gene encodes a protein sharing 96% amino acid similarity with ribosomal protein S27, which suggests the encoded protein may be a component of the 40S ribosomal subunit. [provided by RefSeq, Jul 2008]

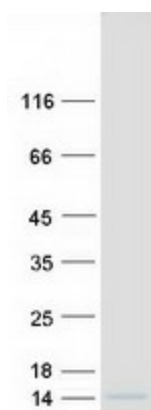
Product images:



Circular map for RC202658



Western blot validation of overexpression lysate (Cat# [LY414323]) using anti-DDK antibody (Cat# [TA50011-100]). Left: Cell lysates from untransfected HEK293T cells; Right: Cell lysates from HEK293T cells transfected with RC202658 using transfection reagent MegaTran 2.0 (Cat# [TT210002]).



Coomassie blue staining of purified RPS27L protein (Cat# [TP302658]). The protein was produced from HEK293T cells transfected with RPS27L cDNA clone (Cat# RC202658) using MegaTran 2.0 (Cat# [TT210002]).